

**Air Quality Conformity Analysis
for the
Muskegon County, Michigan 2015 Ozone NAAQS Nonattainment
Area
June 15, 2022**

Final

Prepared by:
Michigan Department of Transportation
Statewide and Urban Travel Analysis Section
Van Wagoner Transportation Building
Lansing, MI 48909
WittID@Michigan.gov
517-335-4620

in cooperation with
West Michigan Shoreline Regional Development Commission (WMSRDC)
316 Morris Ave.
Muskegon, MI 49440
231-722-7878
www.wmsrdc.org

Table of Contents

1.0 Conformity	4
1.1 Introduction.....	4
1.2 Nonattainment and Maintenance Areas	4
1.3 Conformity Finding.....	4
1.4 Results of Conformity Analysis.....	5
2.0 Background and Attainment Status.....	5
2.1 Background.....	5
2.2 Attainment Status	6
2.3 SIP Budgets	6
3.0 Interagency Consultation.....	7
4.0 Public Participation	7
5.0 Projects Evaluated for the Conformity Analysis	7
6.0 Transportation Modeling.....	8
6.1 Travel Demand Forecasting Models.....	8
6.1.2 WestPlan Model.....	8
6.1.3 Coding Travel Demand Model Links for NFC by Urban and Rural.....	8
6.1.4 Highway Performance Monitoring System (HPMS)	8
6.2 Analysis Years	9
7.0 Latest Planning Assumptions	9
7.1 Demographic Data.....	9
7.2 Vehicle Miles of Travel	9
7.3 Vehicle Hours of Travel	10
7.4 Transportation Control Measures.....	10
8.0 Emission Modeling.....	10
8.1 MOVES Specifications.....	10
8.2 Road Type Distribution.....	10
8.3 Average Speed.....	10
8.4 Ramp Fraction	10
8.5 Average Weekday VMT to Annual VMT.....	11
8.6 Vehicle Population	11
8.7 Vehicle Age Distribution.....	11

8.8 Other Local Data.....	11
9.0 Conclusion.....	11
Appendix A: Meeting Summary of the Interagency Workgroups	14
Appendix B: Public Comments and Responses.....	20
Appendix C: Projects Evaluated for Conformity Analysis	21

List of Tables:

Table 1: Results of 2015 and 1997 Ozone Standard Conformity Analysis.....	5
Table 2: Base and Future Year Population and Employment by County.....	9
Table 3: Vehicle Miles of Travel and Growth Rate by County.....	9
Table 4: Vehicle Hours of Travel by County.....	10
Table 5: MOVES Source Types from SOS Body Style, Plate Type, and Company Code.....	13

1.0 Conformity

1.1 Introduction

Transportation conformity provisions of the Clean Air Act Amendments require metropolitan planning organizations (MPOs) to make a determination that the Long-Range Transportation Plan (LRTP), Transportation Improvement Program (TIP), and projects conform to the State Implementation Plan (SIP), and that regional emissions will not negatively impact the region's ability to meet the National Ambient Air Quality Standards (NAAQS).

Conformity to the SIP means that the region's LRTPs and TIPs 1) will not cause any new violations of the NAAQS; 2) will not increase the frequency or severity of existing violation; and 3) will not delay attaining the NAAQS. A demonstration is conducted by comparing emissions estimates generated from implementation of LRTPs and TIPs for analysis years to the motor vehicle emissions budgets (MVEBs) contained in the maintenance SIP.

The purpose of this report is to document the process and findings of the transportation conformity analysis for the nonattainment and maintenance areas.

1.2 Nonattainment and Maintenance Areas

Muskegon County is partially an ozone nonattainment area and entirely an ozone maintenance area. Within the boundaries is part of the West Michigan Metropolitan Transportation Planning Program (WestPlan).

Findings of the transportation conformity analysis are for projects within Muskegon County. Projects in the 2045 LRTP have not changed since the previous analysis and are included in the modeling but not in the project list. Projects evaluated for this analysis are contained in:

- WestPlan 2023-2026 TIP in Muskegon County

1.3 Conformity Finding

The staff of WestPlan finds that the LRTP and TIP conform to the SIP for the 2015 ozone standard and 1997 ozone standard based on the results of this conformity analysis. This report makes the determination that the region's transportation plan and programs satisfy all applicable criteria and procedures in the conformity regulations.

This conformity analysis document was subject to a public comment period of May 10 - 24, 2022. Comments are recognized, considered, and a response provided in Appendix B.

The MPO policy committee made a formal conformity determination, through a resolution, at the WestPlan Policy Committee on June 15, 2022.

1.4 Results of Conformity Analysis

Conformity is demonstrated when the analysis-year emissions are equal to or less than the SIP budget. For the 2015 and 1997 ozone standards, as shown in Table 1, the emissions results for the analysis years show that the volatile organic compounds (VOC) and nitrogen oxides (NOx) emissions are lower than the SIP budgets; thus, conformity for the ozone standards are demonstrated.

Table 1: Results of 2015 and 1997 Ozone Standard Conformity Analysis

Analysis Year	Emissions (tons/day)	
	VOC	NOx
SIP Budget	6.67	11.0
2023	2.30	2.10
2025	2.18	1.77
2035	1.31	0.80
2045	1.11	0.61

2.0 Background and Attainment Status

2.1 Background

The federal Clean Air Act Amendments of 1990 (CAAA) established rules to improve the air, protect public health, and protect the environment. The act requires the U.S. Environmental Protection Agency (EPA) to set, review, and revise the National Ambient Air Quality Standards (NAAQS) periodically.

The Clean Air Act links together air quality planning and transportation planning through the transportation conformity process. Air quality planning is controlled by Michigan's SIP, which includes the state's plans for attaining or maintaining the NAAQS. The main transportation planning tools are the metropolitan LRTP and the metropolitan TIP. Transportation conformity ensures that federal funding and approval are given to highway and transit activities that are consistent with the SIP and that these activities will not affect Michigan's ability to achieve the NAAQS.

Transportation activities that are subject to conformity are LRTPs, TIPs, and all non-exempt federal projects that receive Federal Highway Administration (FHWA) or Federal Transit Administration (FTA) funding or approval. The conformity process ensures emissions from LRTP, TIP, or projects are within acceptable levels specified within the SIP and meet the goals of the SIP.

Transportation conformity only applies to on-road sources and transportation-related pollutants: ozone, particulate matter (particulate sizes 2.5 and 10), nitrogen dioxide, and carbon monoxide.

In addition to emissions that are directly emitted, regulations specifically require certain precursor pollutants to be addressed. Precursor pollutants are those pollutants that contribute to the formation of other pollutants. For example, ozone is not directly emitted, but created when NO_x and VOC react with sunlight.

When the EPA revises an NAAQS, all areas of the country are evaluated to determine if monitored levels of the pollutant are at or below the standard; these areas are classified as attainment. If the pollutant level is above the standard, these areas are classified as nonattainment. MPOs in areas classified as nonattainment or maintenance must conduct conformity analysis on their transportation programs.

2.2 Attainment Status

On April 15, 2004, the EPA issued final designations of areas not attaining the 1997 ozone NAAQS (also referred to as 1997 ozone standard). Muskegon County was designated a nonattainment area.

On May 16, 2007, the EPA redesignated the area attainment/maintenance, approving and finding adequate motor vehicle emissions budgets for VOC and NO_x for the year 2018. The area was placed into maintenance, requiring conformity emission to be compared to the MVEBs contained in the SIP, referred to as SIP budgets.

On July 20, 2012, the EPA designated all of Michigan as attainment for the strengthened 2008 ozone NAAQS.

On July 20, 2013, the EPA partially revoked the 1997 ozone standard, withdrawing the requirement to do transportation conformity for areas that were in maintenance. On April 6, 2015, the EPA completely revoked the 1997 ozone standard, which resulted in removal of all transportation conformity requirements.

On April 23, 2018, the FHWA started requiring areas in the country to conduct conformity if they were a maintenance area for the 1997 ozone standard and attainment for the 2008 ozone standard when the 1997 ozone NAAQS was revoked. This was to comply with the court's decision in *South Coast Air Quality Management District v. EPA*. Later, this was amended to require MPOs to have a conformity in place on Feb. 16, 2019, and conduct conformity going forward.

On Aug. 3, 2018, the EPA designated part of Muskegon County as nonattainment for the strengthened 2015 ozone NAAQS (also referred to as 2015 ozone standard). Conformity is conducted for the whole county because the MVEB is for the whole county.

2.3 SIP Budgets

Muskegon County has existing maintenance budgets from the 1997 ozone standard maintenance SIP. Regulations require the use of these budgets to test both ozone standards. Emissions

generated must be equal to or less than the SIP budgets, also referred to as MVEB. The MVEB is the portion of the total allowable emissions allocated to highway and transit vehicle use in the maintenance or nonattainment area. By showing emissions are below the MVEB, the LRTP and TIPs are conforming to the SIP. Conformity is conducted for the whole county until a budget is determined for the 2015 ozone nonattainment area.

3.0 Interagency Consultation

Consultation with federal, state, and local transportation authorities is conducted through the Michigan Transportation Conformity Interagency Workgroup (MITC-IAWG). Issues discussed include evaluating and choosing emission models and methods, determining regionally significant project definition and projects, procedures for future MITC-IAWG meetings, and rules for reviewing projects.

A MITC-IAWG was held on April 14, 2022, to review projects and modeling assumptions; individuals attended by Microsoft Teams or conference call. The meeting was a joint meeting between the three conformity areas: The Allegan County Nonattainment Area, the Muskegon County Nonattainment Area, and the Grand Rapids 1997 ozone Limited Orphan Maintenance Area (LOMA). The MPO regions of the MACC and WestPlan extend into Ottawa County, which is part of the Grand Rapids 1997 ozone LOMA. A summary of the MITC-IAWG meeting and relevant interagency consultation correspondence related to this conformity is in Appendix A. A copy of this conformity analysis was sent to each MITC-IAWG member for review and comment.

4.0 Public Participation

The Public Participation Plan, adopted by the MPO policy committee, establishes the procedures by which the MPOs reach affected public agencies and the public. The same procedures were followed for this document, ensuring the public has an opportunity to review and comment before the MPO committee makes a determination.

A formal public comment period for the draft Air Quality Conformity Analysis was held from May 10 to 24, 2022. Public comments received and responses to the comments are in Appendix B.

5.0 Projects Evaluated for the Conformity Analysis

All projects in the WestPlan 2023 to 2026 TIP in Muskegon County were evaluated for inclusion in the analysis. Projects classified as non-exempt must be analyzed. Projects with exempt classification that can be modeled with the travel demand model were modeled. Appendix C includes a complete list of the projects evaluated for inclusion in this analysis. One project was added to the timeframe of the 2045 LRTP. The project is included in the project list, with an open-to-traffic date of 2030.

6.0 Transportation Modeling

6.1 Travel Demand Forecasting Models

Nonattainment areas are established independent of MPO boundaries. The Muskegon County nonattainment and maintenance area is covered by the WestPlan travel demand forecasting model. The model was developed in TransCAD modeling software, using the latest demographic and employment data available to generate estimates of travel, vehicle miles of travel (VMT), vehicles hours of travel (VHT), and speeds. Detailed documentation is contained in a separate document available upon request.

6.1.2 WestPlan Model

The WestPlan model covers all of Muskegon County and the northwest portion of Ottawa County. Only the Muskegon County portion of the model is considered for this analysis. Developed by the Michigan Department of Transportation (MDOT), this standard four-step model has a base year of 2015 and a horizon year of 2045. Each of the four steps - trip generation, trip distribution, mode choice, and traffic assignment - are checked for reasonableness against national standards. Final model validation verifies that the assigned volumes replicate actual traffic counts. The decennial 2010 census and 2015 American Community Survey (ACS) data were the sources of population and household base data. Employment data is developed from a private business database verified with local knowledge. Future data is based on the Regional Economic Models, Inc. (REMI) economic and demographic forecasts. The University of Michigan and MDOT jointly develop county-specific forecast data for the REMI model.

6.1.3 Coding Travel Demand Model Links for NFC by Urban and Rural

For emission modeling, the National Functional Classification (NFC) system is used to determine the function of roads; however, after 2010 NFCs do not distinguish roads by urban and rural. The emission model, Motor Vehicle Emission Simulator (MOVES), requires roads to be classified as urban or rural. MOVES also requires roads to be grouped into one of four road types: rural restricted, rural unrestricted, urban restricted, and urban unrestricted. To determine a road's urban or rural status, roads within the adjusted census urban boundary were considered urban and those outside as rural. NFCs designated as interstate and other freeways are considered restricted while all others are considered unrestricted. The Michigan Geographic Framework (GIS digital base map) was used to combine NFC with adjusted census urban boundary to generate MOVES road types for the network.

6.1.4 Highway Performance Monitoring System (HPMS)

The EPA and FHWA endorse HPMS as the source of VMT estimates. The travel demand modeling VMT is aggregated by NFC road types for the county, then normalized to HPMS data for the base year/validation year of the travel demand model. Normalization factors were applied to all analysis years.

6.2 Analysis Years

Analysis years were determined by the MITC-IAWG. Projects requiring modeling are grouped into an analysis year based on the project's open-to-traffic date. Emissions are generated for each analysis year.

Analysis Year	Reason
2023	2015 ozone standard attainment year
2025	Interim year (thus, analysis years not more than 10 years apart)
2035	Interim year (thus, analysis years not more than 10 years apart)
2045	Last year of WestPlan long-range transportation plan

7.0 Latest Planning Assumptions

7.1 Demographic Data

The most current and future assumptions developed or approved by the MPO were used in the development of the travel demand models. Table 2 shows base and future year population and employment by county from the travel demand models.

Table 2: Base and Future Year Population and Employment by County

County	Population		Employment	
	2015	2045	2015	2045
Muskegon County	223,939	232,248	113,993	119,418

7.2 Vehicle Miles of Travel

VMT is one measure of travel. Current and future levels of travel and growth rates are provided in Table 3.

Table 3: Vehicle Miles of Travel and Growth Rate by County

	Analysis year				
	Base Year 2015	2023	2025	2035	2045
Muskegon County					
VMT	4,108,569	4,257,775	4,291,022	4,370,080	4,403,451
Growth Rate	1.00	1.04	1.04	1.06	1.07

7.3 Vehicle Hours of Travel

VHT is an indicator of congestion. Current and future levels are provided in Table 4.

Table 4: Vehicle Hours of Travel by County

	Analysis year				
Muskegon County	Base Year 2015	2023	2025	2035	2045
VHT	115,118	119,414	120,385	122,722	123,595

7.4 Transportation Control Measures

There are no transportation control measures (TCMs) identified in the applicable state implementation plan. Thus, no measures are included at this time.

8.0 Emission Modeling

8.1 MOVES Specifications

The EPA’s MOVES version MOVES2014b was used to generate emissions. Ozone is formed in the presence of heat and sunlight, so the highest ozone concentrations are monitored during the summer. This conformity analysis involves generating summer (July) weekday emissions to simulate the meteorology of a high-ozone summer day.

8.2 Road Type Distribution

HPMS data is used to create MOVES road-type distribution fractions. County-level HPMS passenger data is used for motorcycle and passenger vehicles, and commercial HPMS is used for trucks and buses. HPMS VMT is aggregated to MOVES road types, then converted to a fraction, generating a road-type distribution.

8.3 Average Speed

Speed distributions are created using a method developed by EPA for taking a single average speed and creating a distribution. The method generates an average speed fraction by MOVES road type, by day, by hour, and speed bin from speeds generated by the travel demand forecasting models. The same distribution is used for each vehicle type.

8.4 Ramp Fraction

Default ramp fractions were used.

8.5 Average Weekday VMT to Annual VMT

Monthly VMT adjustment factors were obtained from MDOT's data collection area. The EPA's AADVMT Converter-Tool MOVES 2014 was used to convert annual average daily VMT to annual VMT, monthly VMT fractions, and daily VMT fractions. Hourly fractions use MOVES default data. For motorcycles, the monthly fractions use MOVES defaults since local data is limited. Future analysis years utilize the same fractions.

8.6 Vehicle Population

The source of the vehicle population is the Michigan Secretary of State (SOS) vehicle registration database of 2015. The database was supplemented with school bus data from the Michigan Department of Education and MDOT public transit bus data. The EPA's default distributions were used to determine intercity bus, refuse truck, single-unit truck, and combination truck categories. The SOS data must be converted to MOVES source (vehicle) types. Table 5 shows how vehicle body style combined with plate type and company code are used to obtain MOVES vehicle types.

Future year vehicle population is based on growth in VMT from base year to analysis year. The growth rate is applied to all MOVES vehicle types. Table 3 shows the VMT for each analysis year and growth rate.

8.7 Vehicle Age Distribution

MOVES requires vehicle age as one of the local data inputs. The Michigan SOS vehicle registration database of 2015 was the source of vehicle ages. Vehicles are assigned to an age group, from 0 to 30-plus, based on model year indicated in the SOS database, with 0 being the newest vehicles (2015 or newer) and each year is its own group until vehicles are 30 years and older, which are aggregated into the 30-plus group. The SOS database is sorted by MOVES vehicle types and age. For intercity buses, refuse trucks, single-unit trucks, and combination trucks, the EPA's default age distribution are used to calculate splits in population because of limited local numbers. Base year age distribution fractions were used for all future analysis years.

8.8 Other Local Data

The MOVES model allows input for other types of local data, if available. This conformity demonstration used default meteorology data since the budgets were developed using default data; thus, analysis should also. Lacking local data, defaults were used for hoteling (truck parking) and starts. The default fuel data is correct for Michigan.

9.0 Conclusion

Conformity has a two-step endorsement process. The MPOs must make a formal conformity determination through a resolution that the findings of this conformity analysis conform to the SIP; thus, emissions are at or below the budgets found in the SIP. Then FHWA, jointly with the FTA, after consultation with the EPA, issues a letter of concurrence with the determination.

The conformity analysis described here and conducted by MDOT, with support of the WestPlan, concludes that the WestPlan 2023-2026 TIP and 2045 LRTP meet all applicable requirements for conformity for the 2015 and 1997 ozone standards; thus, it is recommended that FHWA support this conformity determination finding.

Table 5: MOVES Source Types from SOS Body Style, Plate Type, and Company Code

MOVES Source Type	SOS Body Style, Plate Type, and Company Code
11 – Motorcycles	Motorcycles
21 – Passenger Cars	Two-Door Four-Door Convertible Roadster Low-Speed
31 – Passenger Trucks	Station Wagon Pickup Van Hearse with Plate Type, Personal Ambulance with Plate Type, Personal Panel Van with Plate Type, Personal
32 – Light Commercial Trucks	Pickup Commercial or Company Van Commercial or Company Hearse Commercial or Company Ambulance Commercial or Company Panel Van Commercial or Company Utility Truck Wrecker
40 – Buses (MOVES: 41*, 42, 43)	Bus; Supplemented with Other Data Sources
50 – Single-Unit Trucks* (MOVES: 51, 52, 53)	Dump Truck Mixer Truck Stake Truck
54 – Motorhomes	Motorhome
60 – Combination Trucks* (MOVES: 61, 62)	Tractor Trailer Tanker

* The EPA default age distribution is applied to calculate individual MOVES Source Type categories.

Appendix A: Meeting Summary of the Interagency Workgroups

Meeting Summary

Michigan Transportation Conformity Interagency Workgroup (MITC-IAWG) for:

Allegan County 2015 Ozone Nonattainment Area,

Muskegon County 2015 Ozone Nonattainment Area and

Grand Rapids (Kent and Ottawa Counties) Limited Orphan Maintenance Area

For New 2023 - 2026 TIPs and Rural STIP

1-3 p.m. Thursday, April 14, 2022

Members and partners attended by video conference by Teams.

Agency	Name	In attendance
EPA	Michael Leslie	yes
FHWA for MACC, WestPlan, and GVMC	Andrew Sibold	yes
FTA for Grand Rapids and rural area	Susan Weber	no
FTA for MACC and WestPlan	Rena Redic	no
	Stewart McKenzie	no
EGLE	Breanna Bukowski	yes
MDOT Conformity	Donna Wittl	yes
MDOT SPS for MACC, WestPlan, and GVMC	Luke Walters	yes
MDOT SPS Supervisor	Jeff Franklin	yes, also represented STIP
MACC MPO	Alec Miller	yes
	Jason Latham	yes
WestPlan MPO	Amy Haack	yes
	Brian Mulnix	yes
	Joel Fitzpatrick	yes
GVMC MPO	Andrea Faber	yes
	Laurel Joseph	no
	George Yang	yes
	Mike Zonyk	yes
MDOT STIP	Mark Kloha	no
MDOT- Grand Region	Tyler Kent	yes
	Dennis Kent	no
	Bill Loehle	no
	Susan Rozema	no
MDOT project level	Brad Peterson	no
MDOT SUTA modeling GVMC	Daniela Khavajian	no
MDOT SUTA modeling WestPlan	Ryan Gladding	yes
MDOT SUTA modeling MACC	Jon Roberts	yes
MDOT OPT Allegan	Fred Featherly	yes
MDOT OPT Muskegon and Ottawa	Heather Bowden	no
MDOT OPT Kent	Janet Arcuicci	no

Members and partners introduced themselves to the group.

The group discussed projects in the new 2023 to 2026 Transportation Improvement Programs (TIPs) and State Transportation Improvement Program (STIP). The same meeting summary is used for all three conformity areas.

Allegan County nonattainment area:

The group discussed a new analysis will be needed. Analysis years were discussed and decided. Listed below are the year and reason selected. The group agreed the 2023 year could be interpolated.

Base year of travel demand models: 2015

Attainment year for the 2015 ozone national ambient air quality standard (NAAQS): 2023

Interim year (thus, analysis years are not more than 10 years apart): 2025

Interim year (thus, analysis years are not more than 10 years apart): 2035

Last year of the Metropolitan Transportation Plan (MTP): 2045

The group discussed projects in the Macatawa Area Coordinating Council (MACC) area for both Allegan and Ottawa Counties. Projects on preliminary review were deemed exempt. At the meeting, job number 214789 was discussed as a “left-turn lane” over a half mile and with this description it was deemed non-exempt. After the meeting, further review showed the previous description was incomplete. It was adding a “continuous left center turn lane,” which is exempt if a mile or less. However, the project was added to the travel demand model during the previous conformity analysis for the 2045 MTP, because all projects that can be modeled are modeled if a new conformity analysis is required. The group agreed all projects were exempt for the MACC area in Allegan County and Ottawa County (for the Grand Rapids Limited Orphan Maintenance Area (LOMA)). The group also agreed the projects in the rural STIP in Allegan County were exempt.

Muskegon County nonattainment area:

The group discussed and agreed that the same analysis years decided for Allegan County would be used for the Muskegon County nonattainment area. The group discussed West Michigan Metropolitan Transportation Planning Program (WestPlan) projects in Muskegon County and Ottawa County (for Grand Rapids LOMA) and agreed with the preliminary finding that all projects, except one, was exempt. The group discussed the one non-exempt project and determined it should be modeled for an open-to-traffic date of 2030. It is in the current TIP so it can be moved to future TIPs.

Allegan and Muskegon modeling assumptions for conformity analyses:

The group discussed using MOVES2014b and MOVES3. It was decided MOVES2014b would be used. There would be no changes to the MOVES inputs besides vehicle miles of travel (VMT), vehicle hours of travel (VHT) and speeds from the last conformity analyses. Urban travel demand models will be used for the metropolitan planning organization (MPO) areas, and the statewide model used for the rural area in Allegan County.

Grand Rapids Limited Orphan Maintenance Area:

The Grand Rapids Limited Orphan Maintenance Area (LOMA) for the 1997 ozone NAAQS can demonstrate regional conformity without an emission analysis. Transportation conformity can be demonstrated by showing the other requirements are met. The group discussed the projects and those that were preliminarily thought to be non-exempt and determined all but one was exempt. The rural STIP projects in Ottawa County were discussed and the group agreed all projects were exempt.

GVMC brought 10 new nonmotorized projects to the meeting. Each project was discussed by the group. All but one project was considered exempt. One project required further information because it might be reducing lanes. On reviewing the project after the meeting, it was determined the project was going to remove one lane for a quarter of a mile. The road is a two-lane, one-way street. The road diet questionnaire was filled out and sent to the MITC-IAWG, per policies on road diets, to concur with GVMC and MDOT's opinion that this road diet should be exempt. The group concurred. All 10 projects were sent to the MITC-IAWG if they wanted to review them further. For more details see Additional MITC-IAWG Meeting after this one.

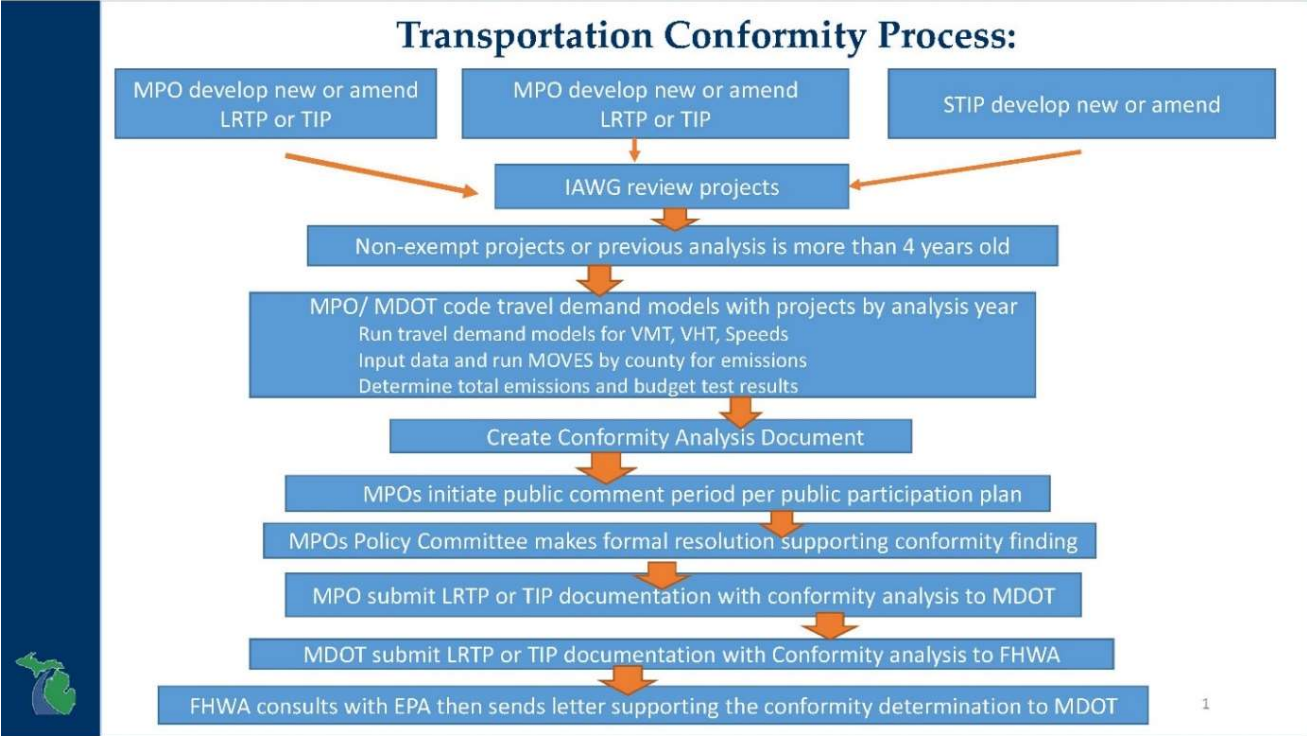
Other discussion topics:

The group discussed that the classification for both the Allegan and Muskegon 2015 ozone nonattainment areas will be changed from marginal to moderate because the areas did not attain the 2015 ozone NAAQS standard by August 2021. The Environmental Protection Agency (EPA) provided the link to the proposed rule which was published in the Federal Register on April 13, 2022. Link provided below.

<https://www.federalregister.gov/documents/2022/04/13/2022-07513/determinations-of-attainment-by-the-attainment-date-extensions-of-the-attainment-date-and>

The WestPlan staff indicated they have invited an individual from the Michigan Department of Environment, Great Lakes, and Energy (EGLE) to discuss with businesses what this means for them. It was suggested this would be good for the MACC and the MPOs in Berrien County, too.

It was requested the steps in the conformity process be described. The steps were described as depicted in the image below. Picture being used here to provide clarity.



The group discussed the idea of the MITC-IAWG only reviewing projects at the construction phase. Phases such as PE, EPE, ROW, NI, etc. would not be reviewed. The WestPlan staff thought this would make the process less confusing. All federal partners will need to agree because certain phases affect different federal partners, like the Federal Transit Administration (FTA). MDOT will draft an e-mail to the Federal Highway Administration (FHWA) so the idea can be presented to FHWA headquarters.

Additional MITC-IAWG Meeting:

An e-mail request for additional review was sent to the MITC-IAWG on Monday, April 18, 2022, to get concurrence for the exempt status for the road diet on Turner Avenue NW. Responses were received from FHWA, EGLE, MDOT, WestPlan, GVMC, and the MACC all concurring with the exempt status. Attached below is the initial e-mail and road diet questionnaire.

Wittl, Donna (MDOT)

From: Wittl, Donna (MDOT)
Sent: Monday, April 18, 2022 4:43 PM
To: leslie.michael@epa.gov; Sibold, Andrew (FHWA); Weber, Susan (FTA); rena.redic@dot.gov; Stewart.Mckenzie; Bukowski, Breanna (EGLE); Walters, Luke (MDOT); Franklin, Jeff (MDOT); Alec Miller; Amy Haack (Muskegon MPO); bmulnix; jfitzpatrick@wmsrdc.org; andrea.faber@gvmc.org; Laurel Joseph; George Yang; Kloha, Mark (MDOT); Kent, Tyler (MDOT); Kent, Dennis (MDOT); Loehle, William (MDOT); Rozema, Susan (MDOT); Peterson, Brad (MDOT); Khavajian, Daniela (MDOT); Gladding, Ryan (MDOT); Roberts, Jonathan (MDOT); Featherly, Fred (MDOT); Bowden, Heather (MDOT); Arcuicci, Janet (MDOT); Jason Latham; Ignasiak, Christina (FHWA)
Subject: Additional review of project for MITC-IAWG April 14 Meeting
Attachments: Road Diet Questionnaire_TurnerBikeway2026 Grand Rapids.docx; GVMC Projects Additional Projects new 23 to 26 TIP.xlsx

Greetings MITC-IAWG Members and Partners for:

Allegan County Nonattainment Area
Muskegon County Nonattainment Area
Grand Rapids Limited Orphan Maintenance Area

At the April 14 meeting the group reviewed and discussed several non-motorized projects brought by GVMC. One of the projects, that does not have a Job number, in the City of Grand Rapids was thought to be reducing through lanes. Clarification was obtained on this project; the project will remove one through lane for $\frac{1}{4}$ of a mile on Turner Ave NW. Turner Ave NW is a one-way street. Given the current policies of the interagency workgroup this project is nonexempt unless the group determines the project is exempt given the information provided on the road diet questionnaire. The MPO and MDOT believe this road diet project should be classified as exempt given the road diet questionnaire attached.

Also attached is the spreadsheet with the 10 projects GVMC brought to the meeting with air quality marked. Project in yellow is for the above-mentioned road diet.

Please review the attached road diet questionnaire and reply to this email with "concur" if you agree with the recommendation. Please use "reply to all. Responses due by **Monday April 25, 2022.**

Also, job number 214789, project within the MACC project list, was discussed at length with a description of left turn lane and the group classified it as such as non-exempt. The correct description should have been continuous left center turn lane. As such the project is exempt. The project was modeled in the LRTP air quality runs and thus has been modeled and will continue to be modeled.

Thanks for your participation,
Donna
Donna Wittl
Air Quality Conformity Specialist
Statewide & Urban Travel Analysis Section
Michigan Department of Transportation
517-335-4620
WittlD@Michigan.gov

GVMC Road Diet Questionnaire

Click "Enable Editing" to begin filling out this form. You may save this form at any time.

Applicant Information			
Agency Name	City of Grand Rapids		
Contact Name	Kristin Bennett	Title	Transportation Engineering Projects Manager
Phone Number	616.456.3753	Email	krbennett@grand-rapids.mi.us

Project Information			
Project Name/Road Name	Turner Avenue/Mt. Vernon Avenue/2 nd St		
Project Limits	Turner Ave NW between 4th St NW to Bridge St NW, Mount Vernon Ave NW between Bridge St NW and Pearl St NW, and 2nd St NW between Turner Ave NW and Stocking Ave NW		
Project Length (nearest hundredth of a mile)	1.00	Proposed Year of construction	2026
Project Description (Please provide major work items including sidewalks, utility work, ADA upgrades etc.)	<p>Construction of bicycle facilities to provide two-way bicycle facilities with connections to existing bicycle facilities on Turner Ave north of 4th St, 4th St west of Turner Ave, and Pearl St/Lake Michigan Dr west of Mount Vernon and connections to planned bicycle facilities on Mount Vernon Ave south of Pearl St, Stocking Ave north of 2nd St, 1st/2nd St west of Stocking Ave, and Pearl St east of Mount Vernon.</p> <p>Turner Ave currently at this location is a one-way street with two through lanes. one excess travel lane will be removed on Turner between 3rd and Bridge (only ¼ mile in length). No other travel lanes will be impacted by the project.</p>		

Traffic Volume			
What is the most current AADT the limits of this project?	2,642 (on the road diet section)	Year of Traffic Volume	2018
Estimate/Actual Count	<input checked="" type="checkbox"/> Count <input type="checkbox"/> Estimate	Source: GVMC Count Database	
In the most recent travel demand model what traffic volume is estimated in 2045	2,485		

Existing and Proposed Roadway Design				
Number of Lanes	Existing		Proposed	
	Through Traffic Lanes	Center Turn Lane	Through Traffic Lanes	Center Turn Lane
	2	0	1	0
Lane With (ft.)	11		12	
Shoulder Surface	<input checked="" type="checkbox"/> Paved <input type="checkbox"/> Unpaved	Width (ft.)	<input checked="" type="checkbox"/> Paved <input type="checkbox"/> Unpaved	Width (ft.)
On road bicycle facilities	<input checked="" type="checkbox"/> Bike Lane <input type="checkbox"/> Other (specify) <input checked="" type="checkbox"/> Sharrows <input type="checkbox"/> Wide Shoulders <input checked="" type="checkbox"/> None		<input checked="" type="checkbox"/> Bike Lane <input checked="" type="checkbox"/> Other (specify) <input type="checkbox"/> Sharrows Two-way Bikeway <input type="checkbox"/> Wide Shoulders <input type="checkbox"/> None	
Please describe any improvements being made as part of this project to crosswalks, signage or signals, or streetscape elements not discussed in project description				

Appendix B: Public Comments and Responses

No comments were received.

Appendix C: Projects Evaluated for Conformity Analysis

Attached are all the projects evaluated at the April 14, 2022, MITC-IAWG. The projects for WestPlan within Muskegon County are being evaluated in this conformity report.

The list of projects begins on the following page.

MACC Project List for 2023-2016 TIP for Allegan and Ottawa Counties

Fiscal Year	Job Type	Job#	County	Responsible Agency	Project Name	Limits	Length	Primary Work Type	Project Description	Phase	Fed Estimated Amount	State Estimated Amount	Local Estimated Amount	Total Estimated Amount	Fund Source	Total Job Cost	Air Quality	Air Quality Comment
2023	Local	206323	Allegan	ACRC	136th Ave	58th Street to 50th Street	4.000	Road Rehabilitation	Resurfacing	CON	\$160,000	\$0	\$40,000	\$200,000	HIC	\$700,000.00	exempt	
2023	Local	206323	Allegan	ACRC	136th Ave	58th Street to 50th Street	4.000	Road Rehabilitation	Resurfacing	CON	\$400,000	\$0	\$100,000	\$500,000	STUL	\$700,000.00	exempt	
2023	Local	206346	Allegan	ACRC	Blue Star Hwy	Blue Star Hwy	0.824	New Facilities	Non-Motorized Pathway	CON	\$400,000	\$0	\$508,264	\$908,264	CM	\$908,264.00	exempt	
2026	Local	214775	Allegan	ACRC	136th Ave	50th Street to M-40	1.220	Road Rehabilitation	Resurfacing	CON	\$365,750	\$0	\$1,334,250	\$1,700,000	STUL	\$1,700,000.00	exempt	
2025	Local	214776	Allegan	ACRC	48th St	142nd Avenue to Ottogan Street	2.782	Road Capital Preventive Maintenance	Resurfacing	CON	\$396,667	\$0	\$226,583	\$623,250	STUL	\$623,250.00	exempt	
2024	Local	214789	Allegan	ACRC	Blue Star Hwy	500' S of 142nd Avenue to 143rd Avenue	0.599	Road Rehabilitation	Resurfacing and the addition of a continues left center turn lane. The proposed cross section would consist of 3 11' wide lanes, 6' paved shoulders, and 1.5' gravel shoulder.	CON	\$170,333	\$0	\$629,667	\$800,000	STUL	\$800,000.00	exempt	Left center turn lanes of a mile or less are exempt. Modeled in travel demand model.
2023	Local	206322	Allegan	Holland	Waverly Rd	Waverly at M-40	0.100	Traffic Safety	Intersection Improvement	CON	\$32,127	\$0	\$42,873	\$75,000	HIC	\$300,000.00	exempt	adding second left turn lane. One project different funding sources
2023	Local	206322	Allegan	Holland	Waverly Rd	Waverly at M-40	0.100	Traffic Safety	Intersection Improvement	CON	\$175,000	\$0	\$50,000	\$225,000	STUL	\$300,000.00	exempt	adding second left turn lane. One project different funding sources
2024	Local	215242	Ottawa	Holland	Columbia Ave	10th Street to 24th Street	0.907	Reconstruction	Reconstruction	CON	\$994,334	\$0	\$3,005,666	\$4,000,000	STUL	\$4,000,000.00	exempt	
2026	Local	215249	Ottawa	Holland	Waverly Rd	Chicago Drive to 16th Street	0.996	Road Rehabilitation	Resurfacing	CON	\$495,750	\$0	\$1,004,250	\$1,500,000	STUL	\$1,500,000.00	exempt	
2023	Local	206345	Ottawa	Holland Twp	Greenly St	Greenly Street: 120th-112th	1.020	New Facilities	Non-Motorized Pathway	CON	\$67,866	\$0	\$16,967	\$84,833	CRSM	\$503,000.00	exempt	
2023	Local	206345	Ottawa	Holland Twp	Greenly St	Greenly Street: 120th-112th	1.020	New Facilities	Non-Motorized Pathway	CON	\$132,134	\$0	\$286,033	\$418,167	CM	\$503,000.00	exempt	
2023	Local	206313	Ottawa	MACC	Douglas Ave	Area-Wide	0.000	Planning, Research & Design	Data Collection	NI	\$17,000	\$0	\$4,250	\$21,250	STUL	\$21,250.00	exempt	
2023	Local	206344	Ottawa	MACC	Douglas Ave	Area-Wide	0.000	Planning, Research & Design	Clean Air Program	NI	\$35,000	\$0	\$10,000	\$45,000	CM	\$45,000.00	exempt	
2024	Local	214514	Ottawa	MACC	Douglas Ave	Area-Wide (MACC office, 301 Douglas Ave.)	0.000	Planning, Research & Design	Clean Air Action Program (10/01/2023 - 09/30/2024)	NI	\$20,000	\$0	\$5,000	\$25,000	CM	\$25,000.00	exempt	
2025	Local	214519	Ottawa	MACC	Douglas Ave	Area-Wide	0.000	Planning, Research & Design	Clean Air Action Program (10/01/2024 - 09/30/2025)	NI	\$20,000	\$0	\$5,000	\$25,000	CM	\$25,000.00	exempt	
2026	Local	214521	Ottawa	MACC	Douglas Ave	Area-Wide	0.000	Planning, Research & Design	Clean Air Action Program (10/01/2025 - 09/20/2026)	NI	\$20,000	\$0	\$5,000	\$25,000	CM	\$25,000.00	exempt	
2024	Local	215447	Ottawa	MACC	Areawide	Areawide	0.000	Planning, Research & Design	Data Collection	NI	\$17,000	\$0	\$4,250	\$21,250	STUL	\$21,250.00	exempt	
2025	Local	215453	Ottawa	MACC	Areawide	Areawide	0.000	Planning, Research & Design	Data Collection	NI	\$17,000	\$0	\$4,250	\$21,250	STUL	\$21,250.00	exempt	
2026	Local	215454	Ottawa	MACC	Areawide	Areawide	0.000	Planning, Research & Design	Data Collection	NI	\$17,000	\$0	\$4,250	\$21,250	STUL	\$21,250.00	exempt	
2023	Multi-Modal	207581	Ottawa	MAX	Transit Capital	MAX Service Area	0.000	SP1403-office equipment (copier, office furniture, etc.)	FY23 - 5307 Transit Capital Items	NI	\$8,000	\$2,000	\$0	\$10,000	5307	\$330,000.00	exempt	
2023	Multi-Modal	207581	Ottawa	MAX	Transit Capital	MAX Service Area	0.000	1110-Bus Rolling Stock	FY23 - 5307 Transit Capital Items	NI	\$224,000	\$56,000	\$0	\$280,000	5307	\$330,000.00	exempt	
2023	Multi-Modal	207581	Ottawa	MAX	Transit Capital	MAX Service Area	0.000	SP1408-maintenance equipment (hoists, tools, etc.)	FY23 - 5307 Transit Capital Items	NI	\$8,000	\$2,000	\$0	\$10,000	5307	\$330,000.00	exempt	
2023	Multi-Modal	207581	Ottawa	MAX	Transit Capital	MAX Service Area	0.000	SP1410-misc. support equipment (explanation must be provided in work detail)	FY23 - 5307 Transit Capital Items	NI	\$16,000	\$4,000	\$0	\$20,000	5307	\$330,000.00	exempt	
2023	Multi-Modal	207581	Ottawa	MAX	Transit Capital	MAX Service Area	0.000	SP1404-computers (hardware and software)	FY23 - 5307 Transit Capital Items	NI	\$8,000	\$2,000	\$0	\$10,000	5307	\$330,000.00	exempt	
2023	Multi-Modal	207582	Ottawa	MAX	Transit Operating	MAX Service Area	0.000	SP3000-operating except JARC and New Freedom	Operating	NI	\$1,210,474	\$1,640,827	\$1,210,474	\$4,061,775	5307	\$4,061,775.00	exempt	
2023	Multi-Modal	207584	Ottawa	MAX	Transit Operating	MAX Service Area	0.000	6470-New Freedom Projects	Twilight & Night Owl	NI	\$142,500	\$0	\$142,500	\$285,000	5310	\$285,000.00	exempt	
2023	Multi-Modal	207585	Ottawa	MAX	Transit Capital	MAX Service Area	0.000	6410-5310 Projects	Mobility Management	NI	\$56,000	\$14,000	\$0	\$70,000	5310	\$70,000.00	exempt	
2023	Multi-Modal	207588	Ottawa	MAX	Transit Capital	MAX Service Area	0.000	SP1101-<30 foot replacement bus with or without lift	Bus Replacement	NI	\$144,000	\$36,000	\$0	\$180,000	5339	\$180,000.00	exempt	
2024	Multi-Modal	214523	Ottawa	MAX	Lincoln Ave	Area-Wide	0.000	SP1409-administrative vehicle	FY 2024 CMAQ: Two <30 foot replacement buses and one administrative vehicle	NI	\$40,000	\$10,000	\$0	\$50,000	CM	\$251,845.00	exempt	
2024	Multi-Modal	214523	Ottawa	MAX	Lincoln Ave	Area-Wide	0.000	SP1101-<30 foot replacement bus with or without lift	FY 2024 CMAQ: Two <30 foot replacement buses and one administrative vehicle	NI	\$161,476	\$40,369	\$0	\$201,845	CM	\$251,845.00	exempt	
2026	Multi-Modal	214524	Ottawa	MAX	Lincoln Ave	Area-Wide	0.000	SP1101-<30 foot replacement bus with or without lift	FY 2026 CMAQ: One <30 foot replacement bus with or without lift	NI	\$210,424	\$52,606	\$0	\$263,030	CM	\$263,030.00	exempt	
2024	Multi-Modal	214582	Ottawa	MAX	Transit Capital	Area-wide	0.000	SP1410-misc. support equipment (explanation must be provided in work detail)	FY24 5307: Bus replacement, service vehicle, and expansion bus	NI	\$12,000	\$3,000	\$0	\$15,000	5307	\$797,717.00	exempt	
2024	Multi-Modal	214582	Ottawa	MAX	Transit Capital	Area-wide	0.000	SP1409-administrative vehicle	FY24 5307: Bus replacement, service vehicle, and expansion bus	NI	\$18,000	\$4,500	\$0	\$22,500	5307	\$797,717.00	exempt	
2024	Multi-Modal	214582	Ottawa	MAX	Transit Capital	Area-wide	0.000	SP1101-<30 foot replacement bus with or without lift	FY24 5307: Bus replacement, service vehicle, and expansion bus	NI	\$190,296	\$47,574	\$0	\$237,870	5307	\$797,717.00	exempt	
2024	Multi-Modal	214582	Ottawa	MAX	Transit Capital	Area-wide	0.000	SP1403-office equipment (copier, office furniture, etc.)	FY24 5307: Bus replacement, service vehicle, and expansion bus	NI	\$8,000	\$2,000	\$0	\$10,000	5307	\$797,717.00	exempt	
2024	Multi-Modal	214582	Ottawa	MAX	Transit Capital	Area-wide	0.000	SP1404-computers (hardware and software)	FY24 5307: Bus replacement, service vehicle, and expansion bus	NI	\$8,000	\$2,000	\$0	\$10,000	5307	\$797,717.00	exempt	
2024	Multi-Modal	214582	Ottawa	MAX	Transit Capital	Area-wide	0.000	SP1408-maintenance equipment (hoists, tools, etc.)	FY24 5307: Bus replacement, service vehicle, and expansion bus	NI	\$8,000	\$2,000	\$0	\$10,000	5307	\$797,717.00	exempt	
2024	Multi-Modal	214582	Ottawa	MAX	Transit Capital	Area-wide	0.000	SP1106-<30 foot expansion bus with or without lift	FY24 5307: Bus replacement, service vehicle, and expansion bus	NI	\$393,878	\$98,469	\$0	\$492,347	5307	\$797,717.00	exempt	

MACC Project List for 2023-2016 TIP for Allegan and Ottawa Counties

Fiscal Year	Job Type	Job#	County	Responsible Agency	Project Name	Limits	Length	Primary Work Type	Project Description	Phase	Fed Estimated Amount	State Estimated Amount	Local Estimated Amount	Total Estimated Amount	Fund Source	Total Job Cost	Air Quality	Air Quality Comment
2024	Multi-Modal	214585	Ottawa	MAX	Lincoln Ave	Area-wide	0.000	SP1101-<30 foot replacement bus with or without lift	FY24 5339: Bus Replacement	NI	\$132,061	\$33,015	\$0	\$165,076	5339	\$165,076.00	exempt	
2024	Multi-Modal	214587	Ottawa	MAX	Lincoln Ave	Area-wide	0.000	6410-5310 Projects	FY 2024 Section 5310: Mobility Management	NI	\$56,000	\$14,000	\$0	\$70,000	5310	\$70,000.00	exempt	
2024	Multi-Modal	214588	Ottawa	MAX	Lincoln Ave	Area-wide	0.000	6470-New Freedom Projects	FY 2024 Section 5310: Twilight & Night Owl	NI	\$142,500	\$0	\$142,500	\$285,000	5310	\$285,000.00	exempt	
2024	Multi-Modal	214589	Ottawa	MAX	Lincoln Ave	Area-wide	0.000	3000-Operating Assistance	FY 2024 Section 5307: Transit Operating Assistance	NI	\$1,927,000	\$1,641,000	\$566,000	\$4,134,000	5307	\$4,134,000.00	exempt	
2026	Multi-Modal	215664	Ottawa	MAX	Transit Capital	Areawide	0.000	SP1404-computers (hardware and software)	5307: FY26 Bus Replacement	NI	\$8,000	\$2,000	\$0	\$10,000	5307	\$286,000.00	exempt	
2026	Multi-Modal	215664	Ottawa	MAX	Transit Capital	Areawide	0.000	SP1410-misc. support equipment (explanation must be provided in work detail)	5307: FY26 Bus Replacement	NI	\$12,000	\$3,000	\$0	\$15,000	5307	\$286,000.00	exempt	
2026	Multi-Modal	215664	Ottawa	MAX	Transit Capital	Areawide	0.000	SP1403-office equipment (copier, office furniture, etc.)	5307: FY26 Bus Replacement	NI	\$8,000	\$2,000	\$0	\$10,000	5307	\$286,000.00	exempt	
2026	Multi-Modal	215664	Ottawa	MAX	Transit Capital	Areawide	0.000	SP1101-<30 foot replacement bus with or without lift	5307: FY26 Bus Replacement	NI	\$192,800	\$48,200	\$0	\$241,000	5307	\$286,000.00	exempt	
2026	Multi-Modal	215664	Ottawa	MAX	Transit Capital	Areawide	0.000	SP1408-maintenance equipment (hoists, tools, etc.)	5307: FY26 Bus Replacement	NI	\$8,000	\$2,000	\$0	\$10,000	5307	\$286,000.00	exempt	
2026	Multi-Modal	215665	Ottawa	MAX	Lincoln Ave	Areawide	0.000	SP3000-operating except JARC and New Freedom	5307: FY26 Transit Operating Assistance	NI	\$1,322,716	\$1,640,827	\$1,322,716	\$4,286,259	5307	\$4,286,259.00	exempt	
2026	Multi-Modal	215739	Ottawa	MAX	Lincoln Ave	Areawide	0.000	6470-New Freedom Projects	FY26 5310 NF Operating	NI	\$142,500	\$0	\$142,500	\$285,000	5310	\$285,000.00	exempt	
2026	Multi-Modal	215747	Ottawa	MAX	Transit Capital	Areawide	0.000	6410-5310 Projects	5310: FY26 Mobility Management	NI	\$56,000	\$14,000	\$0	\$70,000	5310	\$70,000.00	exempt	
2026	Multi-Modal	215748	Ottawa	MAX	Lincoln Ave	Areawide	0.000	SP1101-<30 foot replacement bus with or without lift	FY26 5339 - Transit Capital	NI	\$132,061	\$33,015	\$0	\$165,076	5339	\$165,076.00	exempt	
2024	Multi-Modal	215787	Ottawa	MAX	Lincoln Ave	Areawide	0.000	SP1101-<30 foot replacement bus with or without lift	FY24 Carbon Reduction - SP1101 partial <30 foot replacement bus	NI	\$91,213	\$22,803	\$0	\$114,016	CRSM	\$114,016.00	exempt	
2026	Multi-Modal	215793	Ottawa	MAX	Lincoln Ave	Areawide	0.000	SP1101-<30 foot replacement bus with or without lift	FY26 Carbon Reduction - SP1101 partial <30 foot replacement bus	NI	\$82,265	\$20,566	\$0	\$102,831	CRSM	\$102,831.00	exempt	
2025	Multi-Modal	215871	Ottawa	MAX	Lincoln Ave	Areawide	0.000	SP3000-operating except JARC and New Freedom	FY25 - 5307 - SP3000 Transit Operating	NI	\$1,284,191	\$1,640,827	\$1,284,191	\$4,209,209	5307	\$4,209,209.00	exempt	
2025	Multi-Modal	215873	Ottawa	MAX	Lincoln Ave	Areawide	0.000	6470-New Freedom Projects	FY25 - 5310 - 6470 Transit Operating	NI	\$142,500	\$0	\$142,500	\$285,000	5310	\$285,000.00	exempt	
2026	Multi-Modal	215874	Ottawa	MAX	Lincoln Ave	Areawide	0.000	6410-5310 Projects	FY25 - 5310 Transit Capital 6410-5310	NI	\$56,000	\$14,000	\$0	\$70,000	5310	\$70,000.00	exempt	
2025	Multi-Modal	215895	Ottawa	MAX	Lincoln Ave	Areawide	0.000	SP1408-maintenance equipment (hoists, tools, etc.)	FY25 - 5307 - Transit Capital Items	NI	\$8,000	\$2,000	\$0	\$10,000	5307	\$248,616.00	exempt	
2025	Multi-Modal	215895	Ottawa	MAX	Lincoln Ave	Areawide	0.000	SP1101-<30 foot replacement bus with or without lift	FY25 - 5307 - Transit Capital Items	NI	\$162,893	\$40,723	\$0	\$203,616	5307	\$248,616.00	exempt	
2025	Multi-Modal	215895	Ottawa	MAX	Lincoln Ave	Areawide	0.000	SP1404-computers (hardware and software)	FY25 - 5307 - Transit Capital Items	NI	\$8,000	\$2,000	\$0	\$10,000	5307	\$248,616.00	exempt	
2025	Multi-Modal	215895	Ottawa	MAX	Lincoln Ave	Areawide	0.000	SP1403-office equipment (copier, office furniture, etc.)	FY25 - 5307 - Transit Capital Items	NI	\$8,000	\$2,000	\$0	\$10,000	5307	\$248,616.00	exempt	
2025	Multi-Modal	215895	Ottawa	MAX	Lincoln Ave	Areawide	0.000	SP1410-misc. support equipment (explanation must be provided in work detail)	FY25 - 5307 - Transit Capital Items	NI	\$12,000	\$3,000	\$0	\$15,000	5307	\$248,616.00	exempt	
2025	Multi-Modal	215896	Ottawa	MAX	Lincoln Ave	Areawide	0.000	SP1101-<30 foot replacement bus with or without lift	FY25 - 5339 - SP1101 Transit Capital (to replace)	NI	\$132,061	\$33,015	\$0	\$165,076	5339	\$165,076.00	exempt	
2023	Trunkline	204951	Kent	MDOT	Regionwide	Ottawa	0.000	Traffic Safety	Install traffic signal dilemma zone systems	CON	\$45,570	\$5,063	\$0	\$50,633	HSIP	\$722,541.00	exempt	
2024	Trunkline	205235	Ottawa	MDOT	I-96	I-196 in Ottawa and Allegan	34.885	ITS Applications	Rural Freeway Traffic Management systems	CON	\$1,058,565	\$234,734	\$0	\$1,293,299	NH	\$4,519,584.00	exempt	
2023	Trunkline	207358	Kent	MDOT	Regionwide	All trunkline routes of MACC MPO	1.845	Traffic Safety	Longitudinal pavement marking application on trunklines in Grand Region	PE	\$1,134	\$126	\$0	\$1,260	HSIP	\$2,860,000.00	exempt	
2023	Trunkline	207358	Kent	MDOT	Regionwide	All trunkline routes of MACC MPO	1.845	Traffic Safety	Longitudinal pavement marking application on trunklines in Grand Region	CON	\$323,190	\$35,910	\$0	\$359,100	HSIP	\$2,860,000.00	exempt	
2023	Trunkline	207359	Kent	MDOT	Regionwide	All trunkline routes of MACC MPO	1.845	Traffic Safety	Special pavement marking application on trunklines in Grand Region	PE	\$1,134	\$126	\$0	\$1,260	HSIP	\$500,000.00	exempt	
2023	Trunkline	207359	Kent	MDOT	Regionwide	All trunkline routes of MACC MPO	1.845	Traffic Safety	Special pavement marking application on trunklines in Grand Region	CON	\$55,566	\$6,174	\$0	\$61,740	HSIP	\$500,000.00	exempt	
2023	Trunkline	207375	Kent	MDOT	Regionwide	All trunkline routes of MACC MPO	2.971	Traffic Safety	Pavement marking retroreflectivity readings on trunklines in Grand Region	CON	\$1,814	\$202	\$0	\$2,016	HSIP	\$16,000.00	exempt	
2024	Trunkline	207384	Kent	MDOT	Regionwide	All trunkline routes of MACC MPO	3.354	Traffic Safety	Longitudinal pavement marking application on trunklines in Grand Region	PE	\$1,134	\$126	\$0	\$1,260	HSIP	\$3,110,000.00	exempt	
2024	Trunkline	207384	Kent	MDOT	Regionwide	All trunkline routes of MACC MPO	3.354	Traffic Safety	Longitudinal pavement marking application on trunklines in Grand Region	CON	\$351,540	\$39,060	\$0	\$390,600	HSIP	\$3,110,000.00	exempt	
2024	Trunkline	207385	Kent	MDOT	Regionwide	All trunkline routes of MACC MPO	1.466	Traffic Safety	Special pavement marking application on trunklines in Grand Region	PE	\$1,134	\$126	\$0	\$1,260	HSIP	\$500,000.00	exempt	
2024	Trunkline	207385	Kent	MDOT	Regionwide	All trunkline routes of MACC MPO	1.466	Traffic Safety	Special pavement marking application on trunklines in Grand Region	CON	\$55,566	\$6,174	\$0	\$61,740	HSIP	\$500,000.00	exempt	
2024	Trunkline	207399	Kent	MDOT	Regionwide	All trunkline routes of MACC MPO	1.845	Traffic Safety	Pavement marking retroreflectivity readings on trunklines in Grand Region	CON	\$1,814	\$202	\$0	\$2,016	HSIP	\$16,000.00	exempt	
2023	Trunkline	207962	Allegan	MDOT	M-40	Reimink Street north to 52nd Street	4.125	Road Capital Preventive Maintenance	Single Course Chip Seal	CON	\$590,139	\$130,862	\$0	\$721,000	NH	\$746,000.00	exempt	
2025	Trunkline	209616	Kent	MDOT	Regionwide	All trunkline routes of MACC MPO	3.908	Traffic Safety	Longitudinal pavement marking application on trunklines in Grand Region	PE	\$1,134	\$126	\$0	\$1,260	HSIP	\$2,960,000.00	exempt	
2025	Trunkline	209616	Kent	MDOT	Regionwide	All trunkline routes of MACC MPO	3.908	Traffic Safety	Longitudinal pavement marking application on trunklines in Grand Region	CON	\$334,530	\$37,170	\$0	\$371,700	HSIP	\$2,960,000.00	exempt	
2025	Trunkline	209617	Kent	MDOT	Regionwide	All trunkline routes of MACC MPO	1.983	Traffic Safety	Special pavement marking application on trunklines in Grand Region	PE	\$1,134	\$126	\$0	\$1,260	HSIP	\$475,000.00	exempt	
2025	Trunkline	209617	Kent	MDOT	Regionwide	All trunkline routes of MACC MPO	1.983	Traffic Safety	Special pavement marking application on trunklines in Grand Region	CON	\$52,731	\$5,859	\$0	\$58,590	HSIP	\$475,000.00	exempt	
2025	Trunkline	209631	Kent	MDOT	Regionwide	All trunkline routes of MACC MPO	2.868	Traffic Safety	Pavement marking retroreflectivity readings on trunklines in Grand Region	CON	\$1,814	\$202	\$0	\$2,016	HSIP	\$16,000.00	exempt	
2023	Trunkline	210058	Ottawa	MDOT	I-196 BL	From US-31 east to I-196	4.940	Road Rehabilitation	Inlay	CON	\$23,327,250	\$5,125,678	\$47,072	\$28,500,000	NH	\$30,500,000.00	exempt	

MACC Project List for 2023-2016 TIP for Allegan and Ottawa Counties

Fiscal Year	Job Type	Job#	County	Responsible Agency	Project Name	Limits	Length	Primary Work Type	Project Description	Phase	Fed Estimated Amount	State Estimated Amount	Local Estimated Amount	Total Estimated Amount	Fund Source	Total Job Cost	Air Quality	Air Quality Comment
2026	Trunkline	213275	Kent	MDOT	Regionwide	All Trunkline Routes in Grand Region	17.669	Traffic Safety	Longitudinal Pavement Markings on trunkline routes in Grand Region	PE	\$1,134	\$126	\$0	\$1,260	HSIP	\$2,960,000.00	exempt	
2026	Trunkline	213275	Kent	MDOT	Regionwide	All trunkline routes in Grand Region, All Trunkline Routes in Grand Region	17.669	Traffic Safety	Longitudinal Pavement Markings on trunkline routes in Grand Region	CON	\$334,530	\$37,170	\$0	\$371,700	HSIP	\$2,960,000.00	exempt	
2026	Trunkline	213339	Kent	MDOT	Regionwide	All trunkline routes in MACC MPO	1.557	Traffic Safety	Application of special pavement markings on trunklines in Grand Region	PE	\$1,134	\$126	\$0	\$1,260	HSIP	\$900,000.00	exempt	
2026	Trunkline	213339	Kent	MDOT	Regionwide	All trunkline routes in MACC MPO	1.557	Traffic Safety	Application of special pavement markings on trunklines in Grand Region	CON	\$100,926	\$11,214	\$0	\$112,140	HSIP	\$900,000.00	exempt	
2026	Trunkline	213366	Kent	MDOT	Grand Region Regionwide Pvmr Mrkg Retro Readings	All of MACC MPO	14.886	Traffic Safety	Pvmt mrkg retroreflectivity readings on trunklines in Grand Region	CON	\$1,814	\$202	\$0	\$2,016	HSIP	\$16,000.00	exempt	
2024	Trunkline	214189	Muskegon	MDOT	Regionwide	US-31, I-196 at 32nd	0.000	Traffic Safety	Modernize signalized intersections	PE	\$51,494	\$0	\$0	\$51,494	STG	\$2,256,614.00	exempt	
2026	Trunkline	214189	Muskegon	MDOT	Regionwide	US-31, I-196 at 32nd	0.000	Traffic Safety	Modernize signalized intersections	ROW	\$3,333	\$0	\$0	\$3,333	STG	\$2,256,614.00	exempt	
2024	Trunkline	214956	Allegan	MDOT	I-196	I-196 over the CSX Railroad	0.000	Bridge Rehabilitation	Substructure Repairs	CON	\$3,240,000	\$360,000	\$0	\$3,600,000	BFPI	\$4,100,000.00	exempt	
2023	Local	206128	Ottawa	OCRC	64th Ave	Byron Rd. to Chicago Dr. (M-121)	1.900	Road Capital Preventive Maintenance	Resurfacing and paved shoulders	CON	\$370,000	\$0	\$360,000	\$730,000	STUL	\$730,000.00	exempt	
2023	Local	206145	Ottawa	OCRC	8th Street/Chicago Drive	US-31 to Chicago Drive, 8th Street to US-31	1.250	Road Capital Preventive Maintenance	Resurfacing	CON	\$700,000	\$0	\$275,000	\$975,000	STUL	\$975,000.00	exempt	
2025	Local	214268	Ottawa	OCRC	152nd Ave	152nd Avenue from Butternut Drive to Quincy Street	0.526	New Facilities	New non-motorized pathway	CON	\$205,906	\$0	\$75,615	\$281,521	CM	\$390,000.00	exempt	
2025	Local	214268	Ottawa	OCRC	152nd Ave	152nd Avenue from Butternut Drive to Quincy Street	0.526	New Facilities	New non-motorized pathway	CON	\$86,783	\$0	\$21,696	\$108,479	CRSM	\$390,000.00	exempt	
2026	Local	214812	Ottawa	OCRC	Port Sheldon St	120th Avenue to 96th Avenue	2.998	Road Rehabilitation	Milling and Two Course Asphalt Overlay	CON	\$0	\$58,923	\$0	\$58,923	EDD	\$1,050,000.00	exempt	
2026	Local	214812	Ottawa	OCRC	Port Sheldon St	120th Avenue to 96th Avenue	2.998	Road Rehabilitation	Milling and Two Course Asphalt Overlay	CON	\$718,000	\$0	\$273,077	\$991,077	STL	\$1,050,000.00	exempt	
2025	Local	214927	Ottawa	OCRC	120th Ave	Taylor Street to Fillmore Street	0.973	Road Rehabilitation	Milling and Two Course Asphalt Overlay	CON	\$239,333	\$0	\$91,026	\$330,359	STL	\$350,000.00	exempt	
2025	Local	214927	Ottawa	OCRC	120th Ave	Taylor Street to Fillmore Street	0.973	Road Rehabilitation	Milling and Two Course Asphalt Overlay	CON	\$0	\$19,641	\$0	\$19,641	EDD	\$350,000.00	exempt	
2026	Local	214974	Ottawa	OCRC	Port Sheldon St	120th Avenue Intersection	2.505	Traffic Safety	Roundabout	CON	\$365,750	\$0	\$584,250	\$950,000	STUL	\$950,000.00	exempt	exempt-intersection channelization project
2026	Local	215125	Ottawa	OCRC	Butternut Drive	Lakewood Boulevard to Riley Street	1.830	Road Capital Preventive Maintenance	Resurfacing	CON	\$495,750	\$0	\$304,250	\$800,000	STUL	\$800,000.00	exempt	
2024	Local	215164	Ottawa	OCRC	Riley St	US 131 to 112th Avenue	1.789	Road Capital Preventive Maintenance	Resurfacing	CON	\$494,333	\$0	\$205,667	\$700,000	STUL	\$700,000.00	exempt	
2025	Local	215172	Ottawa	OCRC	Riley St	112th Avenue to 96th Avenue	1.993	Road Capital Preventive Maintenance	Resurfacing	CON	\$496,666	\$0	\$343,334	\$840,000	STUL	\$840,000.00	exempt	
2025	Local	215254	Ottawa	Zeeland	S Church St	Washington Avenue to Central Avenue	0.233	Reconstruction	Reconstruction	CON	\$796,667	\$0	\$1,471,033	\$2,267,700	STUL	\$2,267,700.00	exempt	

Allegan County Project List for Rural STIP 2023 to 2026

Fiscal Year	Job Type	Job#	GPA Type	MPO	County	Responsible Agency	Project Name	Limits	Length	Primary Work Type	Project Description	Phase	Fed Estimated Amount	State Estimated Amount	Local Estimated Amount	Total Estimated Amount	Fund Source	Air Quality	Air Quality Comment
2023	Local	207033	Local Road	Rural	Allegan	Allegan County	106th Ave	106th Avenue & Marsh Road from 10th Street to Barry County Line	6.679	Road Rehabilitation	Asphalt pavement Repair, Resurface with HMA	CON	\$0	\$173,039	\$0	\$173,039	EDD	exempt	
2023	Local	207033	Local Road	Rural	Allegan	Allegan County	106th Ave	106th Avenue & Marsh Road from 10th Street to Barry County Line	6.679	Road Rehabilitation	Asphalt pavement Repair, Resurface with HMA	CON	\$805,200	\$0	\$400,000	\$1,205,200	STL	exempt	
2023	Local	208258	Local Road	Rural	Allegan	Allegan County	26th St	M-89 to 114th Avenue	1.274	Road Rehabilitation	Resurface	CON	\$155,000	\$0	\$45,000	\$200,000	STUL	exempt	
2023	Local	208259	Local Road	Rural	Allegan	Allegan County	Monroe Rd	Grove Street to M-40	1.374	Road Rehabilitation	Resurface	CON	\$140,000	\$0	\$55,000	\$195,000	STUL	exempt	
2023	Local	209368	Local Road	Rural	Allegan	Otsego	Dix St	M-89 to City Limits	1.542	Road Rehabilitation	Complete Mill and Fill of Dix St. and Washington St.	CON	\$375,000	\$0	\$125,000	\$500,000	STUL	exempt	
2023	Trunkline	128163	S/TIP Line items	Rural	Allegan	MDOT	M-89	From M-222 east to 29th Street	1.826	Road Rehabilitation	Mill, Joint Repairs, HMA Overlay, ADA Ramps	CON	\$2,863,113	\$634,887	\$0	\$3,498,000	NH	exempt	
2023	Local	213853	S/TIP Line items	Rural	Allegan	Allegan County	138th Ave	138th Avenue from 24th Street to 21st Street, Allegan County	1.499	Traffic Safety	Horizontal and vertical alignment modifications, shoulder widening	CON	\$600,000	\$0	\$233,860	\$833,860	HRRR	exempt	
2023	Multi-Modal	207256	Transit Capital	Rural	Allegan	Allegan County Board of Commissioners	Transit Capital	Areawide	0.000	1140-Bus Support Equip / Facilities	FY 2023 Small Urban Program - Facility Construction	NI	\$64,000	\$16,000	\$0	\$80,000	STUL	exempt	
2023	Multi-Modal	214917	Transit Capital	Rural	Allegan	Interurban Transit Authority	E Wiley Rd	Area Wide	0.000	1160-Signal & Communication Equip - B	FY 2023 RTF - Communication Equipment	NI	\$25,600	\$6,400	\$0	\$32,000	STL	exempt	
2023	Multi-Modal	214918	Transit Capital	Rural	Allegan	Interurban Transit Authority	E Wiley Rd	Area Wide	0.000	1140-Bus Support Equip / Facilities	FY 2023 RTF - Facility Improvements	NI	\$27,360	\$6,840	\$0	\$34,200	STL	exempt	
2023	Trunkline	210832	Trunkline Road	Rural	Allegan	MDOT	I-196 N	71st Street north to 118th Avenue	6.995	Road Capital Preventive Maintenance	Concrete Pavement Repairs	CON	\$4,163,400	\$462,600	\$0	\$4,626,000	IM	exempt	
2023	Trunkline	214905	Trunkline Traffic Operations And Safety	Rural	Allegan	MDOT	M-89	At Hubbard Street/Ely Street/M-40 Intersection	0.186	Traffic Safety	Construct Roundabout	CON	\$2,046,251	\$453,751	\$0	\$2,500,000	NH	exempt	
2024	Local	215023	Local Bridge	Rural	Allegan	Van Buren County	Baseline Rd	Baseline Road, Str #10788, over the Black River, Van Buren County	0.000	Bridge CPM	Bridge Capital Preventative Maintenance	CON	\$103,200	\$19,350	\$6,450	\$129,000	BO	exempt	
2025	Local	213903	S/TIP Line items	Rural	Allegan	Allegan	State St	State Street - Iron Bridge to Water St; Water St - State St to M-222	0.385	Reconstruction	State Street - Reconstruct; Water Street - Mill and resurface	CON	\$385,000	\$0	\$96,250	\$481,250	STUL	exempt	
2025	Multi-Modal	214913	Transit Capital	Rural	Allegan	Interurban Transit Authority	Transit Capital	Area Wide	0.000	1110-Bus Rolling Stock	FY 2025 RTF - Bus Purchase	NI	\$72,000	\$18,000	\$0	\$90,000	STL	exempt	
2026	Trunkline	211493	Trunkline Bridge	Rural	Allegan	MDOT	US-131	Two (2) Bridges on US-131 over the Grand Elk Railroad.	0.000	Bridge CPM	Substructure Patching	CON	\$2,288,527	\$507,475	\$0	\$2,796,000	NH	exempt	

WestPlan Project List for 2023 to 2026 TIP for Muskegon and Ottawa Counties

Fiscal Year	Job Type	Job#	GPA Type	MPO	County	Responsible Agency	Project Name	Limits	Length	Primary Work Type	Project Description	Phase	Fed Estimated Amount	State Estimated	Local Estimated	Total Estimated Amount	Fund Source	Template Name	Air Quality	Air Quality comment
2030	Trunkline	88877	S/TIP Line Items	West Michigan Metropolitan	Ottawa	MDOT	US-31 NB	Franklin Street north to Jackson Street	0.603	Major Widening	Reconstruct and widen	CON	\$491,100	\$108,900	\$0	\$600,000	NH	Capacity Improvement	non-exempt	adding third through lane to north-bound and south-bound boulevard and left turn lanes in median. City of Grand Haven, Ottawa County. Open to traffic date 2030 and modeled in 2035 analysis year.
2023	Trunkline	105534	S/TIP Line Items	West Michigan Metropolitan	Ottawa	MDOT	US-31 NB	Slayton Street to South Channel Bridge	0.817	Reconstruction	Reconstruction	CON	\$5,477,402	\$1,214,598	\$0	\$6,692,000	NH	Road - Rehabilitation and Reconstruction	exempt	
2024	Trunkline	124871	S/TIP Line Items	West Michigan Metropolitan	Ottawa	MDOT	US-31	US-31 and M-104 in Grand Haven and Spring Lake	5.855	ITS Applications	ITS devices and communications system	CON	\$2,906,437	\$644,494	\$0	\$3,550,931	ST	Intelligent Transportation Systems - Capital	exempt	
2023	Trunkline	201293	S/TIP Line Items	West Michigan Metropolitan	Muskegon	MDOT	US-31BR	US-31 BR SB/NB Over The Black Creek	0.000	Bridge Replacement	Bridge Replacement	CON	\$7,230,630	\$1,603,372	\$0	\$8,834,000	ST	Bridge Replacement and Preservation	exempt	
2023	Trunkline	204951	S/TIP Line Items	West Michigan Metropolitan	Kent	MDOT	Regionwide	Muskegon	0.000	Traffic Safety	Install traffic signal dilemma zone systems	CON	\$118,640	\$13,182	\$0	\$131,822	HSIP	Traffic And Safety - Safety Programs	exempt	
2023	Local	205209	S/TIP Line Items	West Michigan Metropolitan	Muskegon	West Michigan Shoreline Regional Development Commission	Morris Ave	West Michigan Shoreline Regional Development Commission Offices	0.000	Planning, Research & Design	FY23 (10/01/2022 - 09/30/2023) Clean Air Action Outreach and Marketing	NI	\$100,000	\$0	\$25,000	\$125,000	CM	CMAQ	exempt	
2023	Local	205398	S/TIP Line Items	West Michigan Metropolitan	Ottawa	Ottawa County	Mercury Dr	144th Ave to Comstock Street	1.745	Road Rehabilitation	HMA Mill and resurface	CON	\$510,000	\$0	\$155,000	\$665,000	STUL	STP - Small MPO	exempt	
2023	Local	205401	S/TIP Line Items	West Michigan Metropolitan	Muskegon	Roosevelt Park	Glenside Blvd	62' south of Sherman to 18' south of RR tracks	0.220	Reconstruction	Reconstruct	CON	\$300,000	\$0	\$137,000	\$437,000	STUL	STP - Small MPO	exempt	
2023	Local	205401	S/TIP Line Items	West Michigan Metropolitan	Muskegon	Roosevelt Park	Glenside Blvd	62' south of Sherman to 18' south of RR tracks	0.220	Reconstruction	Reconstruct	CON	\$88,593	\$0	\$0	\$88,593	HIC	HIP - Small MPO	exempt	
2023	Local	205415	S/TIP Line Items	West Michigan Metropolitan	Muskegon	Sherman Blvd	Glenside Blvd to Seaway Drive	0.915	Reconstruction	Reconstruction	CON	\$357,000	\$0	\$1,863,000	\$2,220,000	STUL	STP - Small MPO	exempt		
2023	Local	205418	S/TIP Line Items	West Michigan Metropolitan	Muskegon	Muskegon County	Shettler Rd	US-31 to Sheridan Road	1.000	Reconstruction	Reconstruct	CON	\$376,000	\$0	\$219,000	\$595,000	STUL	STP - Small MPO	exempt	
2023	Local	205427	S/TIP Line Items	West Michigan Metropolitan	Muskegon	Muskegon Heights	Hackley Ave	Manz Street to Getty Street	0.440	Reconstruction	Mill and fill	CON	\$88,593	\$0	\$0	\$88,593	HIC	HIP - Small MPO	exempt	
2023	Local	205427	S/TIP Line Items	West Michigan Metropolitan	Muskegon	Muskegon Heights	Hackley Ave	Manz Street to Getty Street	0.440	Reconstruction	Mill and fill	CON	\$350,000	\$0	\$136,000	\$486,000	STUL	STP - Small MPO	exempt	
2023	Local	205428	S/TIP Line Items	West Michigan Metropolitan	Muskegon	Whitehall	Warner St	Slocum Street to Benston Road	0.996	Reconstruction	Road rehabilitation	CON	\$250,000	\$0	\$62,500	\$312,500	STUL	STP - Small MPO	exempt	
2023	Local	205428	S/TIP Line Items	West Michigan Metropolitan	Muskegon	Whitehall	Warner St	Slocum Street to Benston Road	0.996	Reconstruction	Road rehabilitation	CON	\$88,593	\$0	\$0	\$88,593	HIC	HIP - Small MPO	exempt	
2023	Local	205429	S/TIP Line Items	West Michigan Metropolitan	Muskegon	Muskegon	Sanford/Peck St	Keating Avenue to Laketon Avenue	0.540	Reconstruction	Reconstruct	CON	\$540,000	\$0	\$260,000	\$800,000	STUL	STP - Small MPO	exempt	
2023	Local	205907	S/TIP Line Items	West Michigan Metropolitan	Muskegon	Muskegon County	Ravenna Rd	Apple Ave to Bailey Road	3.044	Road Rehabilitation	Crush and shape and asphalt resurfacing	CON	\$602,670	\$0	\$221,905	\$824,575	STL	STP - Rural/Flexible	exempt	
2023	Local	205907	S/TIP Line Items	West Michigan Metropolitan	Muskegon	Muskegon County	Ravenna Rd	Apple Ave to Bailey Road	3.044	Road Rehabilitation	Crush and shape and asphalt resurfacing	CON	\$0	\$220,877	\$0	\$220,877	EDD	TEDF Category D	exempt	
2023	Local	205907	S/TIP Line Items	West Michigan Metropolitan	Muskegon	Muskegon County	Ravenna Rd	Apple Ave to Bailey Road	3.044	Road Rehabilitation	Crush and shape and asphalt resurfacing	CON	\$89,064	\$0	\$0	\$89,064	HIC	HIP - Rural	exempt	
2023	Trunkline	207358	S/TIP Line Items	West Michigan Metropolitan	Kent	MDOT	Regionwide	All trunkline routes of WESTPLAN MPO	1.845	Traffic Safety	Longitudinal pavement marking application on trunklines in Grand Region	PE	\$756	\$84	\$0	\$840	HSIP	Traffic And Safety - Pavement Markings	exempt	
2023	Trunkline	207358	S/TIP Line Items	West Michigan Metropolitan	Kent	MDOT	Regionwide	All trunkline routes of WESTPLAN MPO	1.845	Traffic Safety	Longitudinal pavement marking application on trunklines in Grand Region	CON	\$215,460	\$23,940	\$0	\$239,400	HSIP	Traffic And Safety - Pavement Markings	exempt	
2023	Trunkline	207359	S/TIP Line Items	West Michigan Metropolitan	Kent	MDOT	Regionwide	All trunkline routes of WESTPLAN MPO	1.845	Traffic Safety	Special pavement marking application on trunklines in Grand Region	PE	\$756	\$84	\$0	\$840	HSIP	Traffic And Safety - Pavement Markings	exempt	
2023	Trunkline	207359	S/TIP Line Items	West Michigan Metropolitan	Kent	MDOT	Regionwide	All trunkline routes of WESTPLAN MPO	1.845	Traffic Safety	Special pavement marking application on trunklines in Grand Region	CON	\$37,044	\$4,116	\$0	\$41,160	HSIP	Traffic And Safety - Pavement Markings	exempt	
2023	Trunkline	207375	S/TIP Line Items	West Michigan Metropolitan	Kent	MDOT	Regionwide	All trunkline routes of WESTPLAN MPO	2.971	Traffic Safety	Pavement marking retroreflectivity readings on trunklines in Grand Region	CON	\$1,210	\$134	\$0	\$1,344	HSIP	Traffic And Safety - Pavement Markings	exempt	
2024	Trunkline	207384	S/TIP Line Items	West Michigan Metropolitan	Kent	MDOT	Regionwide	All trunkline routes of WESTPLAN MPO	3.354	Traffic Safety	Longitudinal pavement marking application on trunklines in Grand Region	PE	\$756	\$84	\$0	\$840	HSIP	Traffic And Safety - Pavement Markings	exempt	
2024	Trunkline	207384	S/TIP Line Items	West Michigan Metropolitan	Kent	MDOT	Regionwide	All trunkline routes of WESTPLAN MPO	3.354	Traffic Safety	Longitudinal pavement marking application on trunklines in Grand Region	CON	\$234,360	\$26,040	\$0	\$260,400	HSIP	Traffic And Safety - Pavement Markings	exempt	
2024	Trunkline	207385	S/TIP Line Items	West Michigan Metropolitan	Kent	MDOT	Regionwide	All trunkline routes of WESTPLAN MPO	1.466	Traffic Safety	Special pavement marking application on trunklines in Grand Region	PE	\$756	\$84	\$0	\$840	HSIP	Traffic And Safety - Pavement Markings	exempt	
2024	Trunkline	207385	S/TIP Line Items	West Michigan Metropolitan	Kent	MDOT	Regionwide	All trunkline routes of WESTPLAN MPO	1.466	Traffic Safety	Special pavement marking application on trunklines in Grand Region	CON	\$37,044	\$4,116	\$0	\$41,160	HSIP	Traffic And Safety - Pavement Markings	exempt	
2024	Trunkline	207399	S/TIP Line Items	West Michigan Metropolitan	Kent	MDOT	Regionwide	All trunkline routes of WESTPLAN MPO	1.845	Traffic Safety	Pavement marking retroreflectivity readings on trunklines in Grand Region	CON	\$1,210	\$134	\$0	\$1,344	HSIP	Traffic And Safety - Pavement Markings	exempt	
2024	Trunkline	207544	S/TIP Line Items	West Michigan Metropolitan	Muskegon	MDOT	M-46	Non-Freeway Signing Upgrade	42.237	Traffic Safety	Non-Freeway Signing Upgrade	PE	\$92,000	\$0	\$0	\$92,000	STG	Traffic And Safety - Signs	exempt	
2026	Trunkline	207544	S/TIP Line Items	West Michigan Metropolitan	Muskegon	MDOT	M-46	Non-Freeway Signing Upgrade, Non-freeway signing upgrade	42.237	Traffic Safety	Non-Freeway Signing Upgrade	CON	\$527,121	\$0	\$0	\$527,121	STG	Traffic And Safety - Signs	exempt	
2024	Trunkline	207967	S/TIP Line Items	West Michigan Metropolitan	Muskegon	MDOT	M-46	From Shonot Street east to Maple Island Road	6.904	Road Rehabilitation	Milling and Two Course Asphalt Resurfacing	CON	\$8,353,611	\$1,852,389	\$0	\$10,206,000	ST	Road - Rehabilitation and Reconstruction	exempt	
2025	Trunkline	209616	S/TIP Line Items	West Michigan Metropolitan	Kent	MDOT	Regionwide	All trunkline routes of WESTPLAN MPO	3.908	Traffic Safety	Longitudinal pavement marking application on trunklines in Grand Region	PE	\$756	\$84	\$0	\$840	HSIP	Traffic And Safety - Pavement Markings	exempt	
2025	Trunkline	209616	S/TIP Line Items	West Michigan Metropolitan	Kent	MDOT	Regionwide	All trunkline routes of WESTPLAN MPO	3.908	Traffic Safety	Longitudinal pavement marking application on trunklines in Grand Region	CON	\$223,020	\$24,780	\$0	\$247,800	HSIP	Traffic And Safety - Pavement Markings	exempt	
2025	Trunkline	209617	S/TIP Line Items	West Michigan Metropolitan	Kent	MDOT	Regionwide	All trunkline routes of WESTPLAN MPO	1.983	Traffic Safety	Special pavement marking application on trunklines in Grand Region	PE	\$756	\$84	\$0	\$840	HSIP	Traffic And Safety - Pavement Markings	exempt	
2025	Trunkline	209617	S/TIP Line Items	West Michigan Metropolitan	Kent	MDOT	Regionwide	All trunkline routes of WESTPLAN MPO	1.983	Traffic Safety	Special pavement marking application on trunklines in Grand Region	CON	\$35,154	\$3,906	\$0	\$39,060	HSIP	Traffic And Safety - Pavement Markings	exempt	
2025	Trunkline	209631	S/TIP Line Items	West Michigan Metropolitan	Kent	MDOT	Regionwide	All trunkline routes of WESTPLAN MPO	2.868	Traffic Safety	Pavement marking retroreflectivity readings on trunklines in Grand Region	CON	\$1,210	\$134	\$0	\$1,344	HSIP	Traffic And Safety - Pavement Markings	exempt	
2023	Local	212255	S/TIP Line Items	West Michigan Metropolitan	Muskegon	Fruitport	Bridge Street	Bridge Street, Str #7696 over Norris Creek, Village of Fruitport	0.000	Bridge CPM	Bridge Capital Preventative Maintenance	CON	\$172,800	\$32,400	\$10,800	\$215,000	BHT	STP - Flexible (Bridge)	exempt	
2023	Local	212256	S/TIP Line Items	West Michigan Metropolitan	Ottawa	Ottawa County	Green Street	Green Street, Str #8831 over Stearns Bayou, Ottawa County	0.000	Bridge CPM	Bridge Capital Preventative Maintenance	CON	\$142,400	\$8,900	\$26,700	\$178,000	BHT	STP - Flexible (Bridge)	exempt	
2023	Trunkline	212951	S/TIP Line Items	West Michigan Metropolitan	Ottawa	MDOT	US-31	US-31 South of Van Wagner Street	0.024	Reconstruction	Culvert Replacement	CON	\$2,874,572	\$637,428	\$0	\$3,512,000	NH	Culverts-Capital	exempt	
2026	Trunkline	213275	S/TIP Line Items	West Michigan Metropolitan	Kent	MDOT	Regionwide	All Trunkline Routes in Grand Region	17.669	Traffic Safety	Longitudinal Pavement Markings on trunkline routes in Grand Region	PE	\$756	\$84	\$0	\$840	HSIP	Traffic And Safety - Pavement Markings	exempt	
2026	Trunkline	213275	S/TIP Line Items	West Michigan Metropolitan	Kent	MDOT	Regionwide	All trunkline routes in Grand Region, All Trunkline Routes in Grand Region	17.669	Traffic Safety	Longitudinal Pavement Markings on trunkline routes in Grand Region	CON	\$223,020	\$24,780	\$0	\$247,800	HSIP	Traffic And Safety - Pavement Markings	exempt	
2026	Trunkline	213339	S/TIP Line Items	West Michigan Metropolitan	Kent	MDOT	Regionwide	All trunkline routes in WESTPLAN MPO	1.557	Traffic Safety	Application of special pavement markings on trunklines in Grand Region	PE	\$756	\$84	\$0	\$840	HSIP	Traffic And Safety - Pavement Markings	exempt	
2026	Trunkline	213339	S/TIP Line Items	West Michigan Metropolitan	Kent	MDOT	Regionwide	All trunkline routes in WESTPLAN MPO	1.557	Traffic Safety	Application of special pavement markings on trunklines in Grand Region	CON	\$67,284	\$7,476	\$0	\$74,760	HSIP	Traffic And Safety - Pavement Markings	exempt	
2026	Trunkline	213366	S/TIP Line Items	West Michigan Metropolitan	Kent	MDOT	Grand Region	All of WESTPLAN MPO	14.886	Traffic Safety	Pvmt mtrg retroreflectivity readings on trunklines in Grand Region	CON	\$1,210	\$134	\$0	\$1,344	HSIP	Traffic And Safety - Pavement Markings	exempt	
2023	Local	213628	S/TIP Line Items	West Michigan Metropolitan	Muskegon	West Michigan Shoreline Regional Development Commission	Morris Ave	WMSRDC Planning Area	0.000	Planning, Research & Design	Non-Motorized/Pedestrian Traffic Counting Devices	NI	\$30,000	\$0	\$0	\$30,000	HIC	HIP - Small MPO	exempt	
2024	Local	213638	S/TIP Line Items	West Michigan Metropolitan	Muskegon	Fruitport	8th St	Park Street to Beech Street	0.275	New Facilities	Construct non-motorized path on east side of street	CON	\$88,593	\$0	\$111,407	\$200,000	HIC	HIP - Small MPO	exempt	
2023	Local	213745	S/TIP Line Items	West Michigan Metropolitan	Muskegon	Norton Shores	Harvey St	Harvey Street at Pontoluna Road and at Sternberg Rd, city of Norton Shores	0.298	Traffic Safety	Signal Backplates	CON	\$9,000	\$0	\$1,000	\$10,000	HSIP	Safety	exempt	
2024	Local	213938	S/TIP Line Items	West Michigan Metropolitan	Ottawa	Spring Lake	E Exchange St	Elm Street to Lake Avenue	0.381	Road Rehabilitation	Resurface	CON	\$516,300	\$0	\$134,075	\$650,375	STUL	STP - Small MPO	exempt	
2026	Local	214048	S/TIP Line Items	West Michigan Metropolitan	Ottawa	Ottawa County	Lincoln St	Intersection of Lincoln and 144th Street	0.001	Traffic Safety	Construct roundabout	CON	\$450,000	\$0	\$500,000	\$950,000	CM	CMAQ	exempt	roundabouts are exempt
2024	Local	214098	S/TIP Line Items	West Michigan Metropolitan	Muskegon	West Michigan Shoreline Regional Development Commission	Morris Ave	316 Morris Ave	0.000	Planning, Research & Design	Air quality program	NI	\$90,000	\$0	\$22,500	\$112,500	CM	CMAQ	exempt	
2025	Local	214099	S/TIP Line Items	West Michigan Metropolitan	Muskegon	West Michigan Shoreline Regional Development Commission	Morris Ave	Areawide	0.000	Planning, Research & Design	Air quality program	NI	\$90,000	\$0	\$22,500	\$112,500	CM	CMAQ	exempt	
2023	Local	214126	S/TIP Line Items	West Michigan Metropolitan	Muskegon	North Muskegon	Fleming St	Fleming St from Ruddiman Dr to Moulton Ave, city of North Muskegon	0.134	Traffic Safety	Curb and gutter, sidewalk ramps, remove bump out	CON	\$321,840	\$0	\$80,460	\$402,300	HSIP	Safety	exempt	
2026	Local	214151	S/TIP Line Items	West Michigan Metropolitan	Muskegon	Roosevelt Park	Broadway Ave	Along Broadway from Glenside 2000' east	0.400	New Facilities	Construct non-motorized pathway	CON	\$112,633	\$0	\$60,717	\$173,350	CM	CMAQ	exempt	
2024	Trunkline	214189	S/TIP Line Items	West Michigan Metropolitan	Muskegon	MDOT	M-104 at Fruitport	Regionwide	0.000	Traffic Safety	Modernize signalized intersections	PE	\$51,494	\$0	\$0	\$51,494	STG	Traffic Signal Modernization	exempt	
2026	Trunkline	214189	S/TIP Line Items	West Michigan Metropolitan	Muskegon	MDOT	M-104 at Fruitport	Regionwide	0.000	Traffic Safety	Modernize signalized intersections	ROW	\$3,333	\$0	\$0	\$3,333	STG	Traffic Signal Modernization	exempt	
2024	Local	214246	S/TIP Line Items	West Michigan Metropolitan	Muskegon	West Michigan Shoreline Regional Development Commission	Morris Ave	Areawide	0.000	Planning, Research & Design	Air quality program	NI	\$90,000	\$0	\$22,500	\$112,500				

WestPlan Project List for 2023 to 2026 TIP for Muskegon and Ottawa Counties

Fiscal Year	Job Type	Job#	GPA Type	MPO	County	Responsible Agency	Project Name	Limits	Length	Primary Work Type	Project Description	Phase	Fed Estimated Amount	State Estimated	Local Estimated	Total Estimated Amount	Fund Source	Template Name	Air Quality	Air Quality comment
2023	Local	214665	S/TIP Line Items	West Michigan Metropolitan	Muskegon	Norton Shores	Lincoln St	Lincoln St west of Leon St. city of Norton Shores	0.129	Traffic Safety	High Friction Surface Treatment	CON	\$55,280	\$0	\$13,820	\$69,100	HSIP	Safety	exempt	
2024	Local	214704	S/TIP Line Items	West Michigan Metropolitan	Ottawa	Ottawa County	Cleveland St	Cleveland Street, Str #8849 over the Crockery Creek Tributary, Ottawa Co.	0.000	Bridge Replacement	Bridge Replacement	CON	\$1,079,200	\$0	\$269,800	\$1,349,000	BRT	STP - Flexible (Bridge)	exempt	
2025	Local	214856	S/TIP Line Items	West Michigan Metropolitan	Ottawa	Ottawa County	120th Ave	120th Avenue from Fillmore to M45	2.030	Road Rehabilitation	Milling and Two Course Asphalt Overlay	CON	\$478,667	\$0	\$182,051	\$660,718	STL	STP - Rural/Flexible	exempt	
2025	Local	214856	S/TIP Line Items	West Michigan Metropolitan	Ottawa	Ottawa County	120th Ave	120th Avenue from Fillmore to M45	2.030	Road Rehabilitation	Milling and Two Course Asphalt Overlay	CON	\$0	\$39,282	\$0	\$39,282	EDD	TEDF Category D	exempt	
2023	Trunkline	214896	S/TIP Line Items	West Michigan Metropolitan	Muskegon	MDOT	M-46	Muskegon Avenue east to Home Street	2.083	Road Rehabilitation	Concrete Pavement Inlay	ROW	\$20,463	\$4,141	\$397	\$25,000	NH	Road - Rehabilitation and Reconstruction	exempt	
2025	Trunkline	214896	S/TIP Line Items	West Michigan Metropolitan	Muskegon	MDOT	M-46	Muskegon Avenue east to Home Street	2.083	Road Rehabilitation	Concrete Pavement Inlay	CON	\$18,399,890	\$3,723,109	\$357,011	\$22,480,000	NH	Road - Rehabilitation and Reconstruction	exempt	
2025	Trunkline	215262	S/TIP Line Items	West Michigan Metropolitan	Muskegon	MDOT	M-46	M-46 over Crockery Creek	0.000	Bridge Replacement	Bridge Replacement	CON	\$2,823,825	\$0	\$626,175	\$3,450,000	BFP	Bridge Replacement and Preservation	exempt	
2024	Local	215196	S/TIP Line Items	West Michigan Metropolitan	Muskegon	Muskegon Heights	Broadway Ave	Hoyt to Sanford	0.312	Road Rehabilitation	Resurface	CON	\$564,000	\$0	\$282,120	\$846,120	STUL	STP - Small MPO	exempt	
2024	Local	215556	S/TIP Line Items	West Michigan Metropolitan	Muskegon	Muskegon	Southern Ave	Lakeshore to Division	0.562	Reconstruction	Reconstruct	CON	\$831,700	\$0	\$1,215,100	\$2,046,800	STUL	STP - Small MPO	exempt	
2024	Local	215559	S/TIP Line Items	West Michigan Metropolitan	Muskegon	Muskegon County	Airline Rd	Hile Road to US-31 NB Overpass	0.433	Reconstruction	Reconstruct	CON	\$392,000	\$0	\$113,000	\$505,000	STUL	STP - Small MPO	exempt	
2024	Local	215561	S/TIP Line Items	West Michigan Metropolitan	Ottawa	Ottawa County	W Spring Lake Rd	Multiple Locations, Ottawa County	2.311	Road Rehabilitation	Resurface	CON	\$400,000	\$0	\$275,000	\$675,000	STUL	STP - Small MPO	exempt	
2025	Local	215671	S/TIP Line Items	West Michigan Metropolitan	Ottawa	Ferrysburg	168th Ave	West Spring Lake Road to VanWagoner Road	0.595	Reconstruction	Reconstruct	CON	\$450,000	\$0	\$518,310	\$968,310	STUL	STP - Small MPO	exempt	
2025	Local	215674	S/TIP Line Items	West Michigan Metropolitan	Ottawa	Grand Haven	Fulton Ave	N 1st Street to N 5th Street	0.350	Reconstruction	Reconstruct	CON	\$1,028,704	\$0	\$1,615,261	\$2,643,965	STUL	STP - Small MPO	exempt	
2025	Local	215731	S/TIP Line Items	West Michigan Metropolitan	Muskegon	North Muskegon	Ruddiman Dr	Linderman Blvd to Bear Lake Bridge	1.103	Road Rehabilitation	Resurface	CON	\$260,000	\$0	\$125,365	\$385,365	STUL	STP - Small MPO	exempt	
2026	Local	215733	S/TIP Line Items	West Michigan Metropolitan	Muskegon	Muskegon	Irwin Ave	Peck Street to Nims Ave	0.627	Reconstruction	Reconstruct	CON	\$900,000	\$0	\$319,800	\$1,618,800	STUL	STP - Small MPO	exempt	
2025	Local	215735	S/TIP Line Items	West Michigan Metropolitan	Muskegon	Rosevelt Park	Maple Grove Rd	40' South of Broadway Ave centerline to 69' north of Norton Ave centerline	0.722	Road Rehabilitation	Resurface	CON	\$232,000	\$0	\$58,000	\$290,000	STUL	STP - Small MPO	exempt	
2025	Local	215738	S/TIP Line Items	West Michigan Metropolitan	Ottawa	Ottawa County	Lincoln St	US-31 to 144th Avenue	2.851	Road Rehabilitation	Resurface	CON	\$784,000	\$0	\$196,000	\$980,000	STUL	STP - Small MPO	exempt	
2026	Local	215759	S/TIP Line Items	West Michigan Metropolitan	Muskegon	Montague	Wilcox St	Old Channel Trail to Cook Street	0.281	Reconstruction	Reconstruct	CON	\$180,000	\$0	\$61,700	\$241,700	STUL	STP - Small MPO	exempt	
2026	Local	215761	S/TIP Line Items	West Michigan Metropolitan	Muskegon	Muskegon County	Evanston Ave	Mill Iron to Wolf Lake Road	2.450	Road Rehabilitation	Resurface	CON	\$837,480	\$0	\$229,370	\$1,066,850	STUL	STP - Small MPO	exempt	
2026	Local	215762	S/TIP Line Items	West Michigan Metropolitan	Muskegon	Norton Shores	McCracken St	Norton Avenue to Boneville Drive	0.512	Reconstruction	Reconstruct	CON	\$990,520	\$0	\$1,386,480	\$2,377,000	STUL	STP - Small MPO	exempt	
2023	Multi-Modal	205207	Transit Capital	West Michigan Metropolitan	Ottawa	Harbor Transit Multi-Model Transportation System	N Ferry St	Harbor Transit Service Area	0.000	SP1101-<30 foot replacement bus with or without lift	Bus Replacement FY 2023	NI	\$130,000	\$32,500	\$0	\$162,500	CM	Transit	exempt	
2023	Multi-Modal	205212	Transit Capital	West Michigan Metropolitan	Muskegon	Muskegon County Board of Commissioners	6th St	MATS service area	0.000	SP1103-35-39 foot replacement bus with or without lift	Heavy duty replacement bus	NI	\$285,000	\$71,250	\$0	\$356,250	CM	Transit	exempt	
2023	Multi-Modal	205213	Transit Capital	West Michigan Metropolitan	Muskegon	Muskegon County Board of Commissioners	6th St	MATS service area	0.000	SP1103-35-39 foot replacement bus with or without lift	Heavy duty replacement bus FY 2023 #1	NI	\$354,239	\$88,560	\$0	\$442,799	CM	Transit	exempt	
2023	Multi-Modal	206113	Transit Capital	West Michigan Metropolitan	Muskegon	AgeWell Services of West Michigan	Webster Ave	313 West Webster Avenue, Muskegon, Michigan 49440	0.000	1110-Bus Rolling Stock	Replacement Vehicles (6)	NI	\$179,200	\$44,800	\$0	\$224,000	5310	Transit	exempt	
2023	Multi-Modal	206761	Transit Capital	West Michigan Metropolitan	Ottawa	Harbor Transit Multi-Model Transportation System	N Ferry St	440 N Ferry Street	0.000	SP1101-<30 foot replacement bus with or without lift	Purchase one replacement bus	NI	\$65,000	\$16,250	\$0	\$81,250	5339	Transit	exempt	
2023	Multi-Modal	206762	Transit Capital	West Michigan Metropolitan	Ottawa	Harbor Transit Multi-Model Transportation System	N Ferry St	440 N Ferry Street Grand Haven MI	0.000	SP1103-35-39 foot replacement bus with or without lift	Purchase one replacement bus	NI	\$104,000	\$26,000	\$0	\$130,000	5307	Transit	exempt	
2023	Multi-Modal	206934	Transit Capital	West Michigan Metropolitan	Muskegon	Pioneer Resources - Muskegon	Wesley Ave	601 Terrace, Suite 100 Muskegon MI	0.000	1110-Bus Rolling Stock	Replacement buses, six medium duty with lifts	NI	\$480,000	\$120,000	\$0	\$600,000	5310	Transit	exempt	
2023	Multi-Modal	206979	Transit Capital	West Michigan Metropolitan	Muskegon	Pioneer Resources - Muskegon	Wesley Ave	601 Terrace, Suite 100 Muskegon MI	0.000	6470-New Freedom Projects	Regional Mobility management	NI	\$4,000	\$1,000	\$0	\$5,000	5310	Transit	exempt	
2023	Multi-Modal	207051	Transit Capital	West Michigan Metropolitan	Muskegon	Muskegon County Board of Commissioners	6th St	2624 Sixth Street	0.000	SP1410-misc. support equipment (explanation must be provided in work detail)	Support equipment	NI	\$40,000	\$10,000	\$0	\$50,000	5307	Transit	exempt	
2023	Multi-Modal	207061	Transit Capital	West Michigan Metropolitan	Muskegon	Muskegon County Board of Commissioners	6th St	2624 Sixth Street	0.000	6470-New Freedom Projects	Mobility management	NI	\$140,000	\$35,000	\$0	\$175,000	5310	Transit	exempt	
2023	Multi-Modal	207063	Transit Capital	West Michigan Metropolitan	Muskegon	Muskegon County Board of Commissioners	6th St	2624 Sixth Street	0.000	SP1410-misc. support equipment (explanation must be provided in work detail)	Support equipment and one bus	NI	\$101,222	\$25,306	\$0	\$126,528	5339	Transit	exempt	
2023	Multi-Modal	207063	Transit Capital	West Michigan Metropolitan	Muskegon	Muskegon County Board of Commissioners	6th St	2624 Sixth Street	0.000	SP1103-35-39 foot replacement bus with or without lift	Support equipment and one bus	NI	\$115,000	\$28,750	\$0	\$143,750	5339	Transit	exempt	
2023	Multi-Modal	207079	Transit Capital	West Michigan Metropolitan	Muskegon	Goodwill Industries of West Michigan	M-46	271 East Apple Avenue, Muskegon Michigan 49442	0.000	1110-Bus Rolling Stock	Bus Replacement and Bus Purchase	NI	\$97,998	\$24,500	\$0	\$122,498	5310	Transit	exempt	
2026	Multi-Modal	214053	Transit Capital	West Michigan Metropolitan	Muskegon	Muskegon County Board of Commissioners	Transit Capital	Areawide	0.000	SP1705-public outreach/marketing	FY 26 5307 CMAQ Outreach and Marketing	NI	\$85,568	\$21,392	\$0	\$106,960	CM	Transit	exempt	
2024	Multi-Modal	214096	Transit Capital	West Michigan Metropolitan	Ottawa	Harbor Transit Multi-Model Transportation System	Transit Capital	Location to be determined	0.000	SP1201-admin/maintenance facility construction	FY24 CMAQ 5307 Flex Construct new transit facility	NI	\$758,494	\$189,623	\$0	\$948,117	CM	Transit	exempt	
2025	Multi-Modal	214102	Transit Capital	West Michigan Metropolitan	Ottawa	Harbor Transit Multi-Model Transportation System	Transit Capital	Areawide	0.000	SP1201-admin/maintenance facility construction	FY25 CMAQ 5307 Construct new transit facility	NI	\$516,357	\$129,089	\$0	\$645,446	CM	Transit	exempt	
2026	Multi-Modal	214301	Transit Capital	West Michigan Metropolitan	Muskegon	Muskegon County Board of Commissioners	Transit Capital	Areawide	0.000	SP1103-35-39 foot replacement bus with or without lift	FY2026 CMAQ 5307 Heavy Duty bus replacement	NI	\$345,816	\$86,454	\$0	\$432,270	CM	Transit	exempt	
2024	Multi-Modal	215479	Transit Capital	West Michigan Metropolitan	Ottawa	Harbor Transit Multi-Model Transportation System	Transit Capital	Areawide	0.000	SP1101-<30 foot replacement bus with or without lift	FY 2025 - SECTION 5307 TRANSIT CAPITAL - <30 ft replacement bus	NI	\$264,000	\$66,000	\$0	\$330,000	5307	Transit	exempt	
2024	Multi-Modal	215553	Transit Capital	West Michigan Metropolitan	Ottawa	Harbor Transit Multi-Model Transportation System	N Ferry St	AREAWIDE	0.000	SP1101-<30 foot replacement bus with or without lift	FY 2024 5307 <30 FOOT REPLACEMENT BUS	NI	\$264,000	\$66,000	\$0	\$330,000	5307	Transit	exempt	
2024	Multi-Modal	215575	Transit Capital	West Michigan Metropolitan	Ottawa	Harbor Transit Multi-Model Transportation System	N Ferry St	AREAWIDE	0.000	SP1101-<30 foot replacement bus with or without lift	FY 2024 5339 - Capital - <30 ft replacement bus	NI	\$61,270	\$15,317	\$0	\$76,587	5339	Transit	exempt	
2025	Multi-Modal	215579	Transit Capital	West Michigan Metropolitan	Ottawa	Harbor Transit Multi-Model Transportation System	N Ferry St	AREAWIDE	0.000	SP1106-<30 foot expansion bus with or without lift	FY 2025 5307 <30 ft expansion bus	NI	\$264,000	\$66,000	\$0	\$330,000	5307	Transit	exempt	
2025	Multi-Modal	215584	Transit Capital	West Michigan Metropolitan	Ottawa	Harbor Transit Multi-Model Transportation System	Transit Capital	AREAWIDE	0.000	SP1101-<30 foot replacement bus with or without lift	FY 2025 5339 <30 ft replacement bus	NI	\$62,495	\$15,624	\$0	\$78,119	5339	Transit	exempt	
2026	Multi-Modal	215586	Transit Capital	West Michigan Metropolitan	Ottawa	Harbor Transit Multi-Model Transportation System	Transit Operating	AREAWIDE	0.000	SP1106-<30 foot expansion bus with or without lift	FY 2026 5307 Operating CTF Urbanized Formula	NI	\$264,000	\$66,000	\$0	\$330,000	5307	Transit	exempt	
2026	Multi-Modal	215588	Transit Capital	West Michigan Metropolitan	Ottawa	Harbor Transit Multi-Model Transportation System	Transit Capital	AREAWIDE	0.000	SP1101-<30 foot replacement bus with or without lift	FY 2026 5339 <30 ft replacement bus	NI	\$63,745	\$15,936	\$0	\$79,681	5339	Transit	exempt	
2025	Multi-Modal	215742	Transit Capital	West Michigan Metropolitan	Ottawa	Harbor Transit Multi-Model Transportation System	Transit Capital	Areawide	0.000	SP1201-admin/maintenance facility construction	FY25 Carbon Reduction Flex New facility	NI	\$57,074	\$14,269	\$0	\$71,343	CRSM	Transit - STP - Small MPO - Flex	exempt	
2023	Multi-Modal	215757	Transit Capital	West Michigan Metropolitan	Muskegon	Muskegon County Board of Commissioners	Transit Capital	MATS Service Area	0.000	SP1103-35-39 foot replacement bus with or without lift	FY23 Carbon Reduction Flex Heavy Duty Bus Replacement #1	NI	\$45,761	\$11,440	\$0	\$57,201	CRSM	Transit - STP - Small MPO - Flex	exempt	
2025	Multi-Modal	215767	Transit Capital	West Michigan Metropolitan	Ottawa	Harbor Transit Multi-Model Transportation System	Transit Capital	Areawide	0.000	SP1204-bus terminal facility construction	FY25 Carbon Reduction Flex New transit facility	NI	\$55,643	\$13,911	\$0	\$69,554	CRSM	Transit - STP - Small MPO - Flex	exempt	
2026	Multi-Modal	215768	Transit Capital	West Michigan Metropolitan	Muskegon	Muskegon County Board of Commissioners	Transit Capital	Area-Wide	0.000	SP1103-35-39 foot replacement bus with or without lift	FY25 CMAQ 5307 Heavy Duty Bus Replacement 35' Bus	NI	\$54,184	\$13,546	\$0	\$67,730	CRSM	Transit - STP - Small MPO - Flex	exempt	
2023	Multi-Modal	205205	Transit Operating	West Michigan Metropolitan	Ottawa	Harbor Transit Multi-Model Transportation System	N Ferry St	Harbor Transit service area	0.000	SP1705-public outreach/marketing	FY 2023 Outreach and marketing	NI	\$24,900	\$6,225	\$0	\$31,125	CM	Transit	exempt	
2023	Multi-Modal	206949	Transit Operating	West Michigan Metropolitan	Muskegon	Pioneer Resources	Wesley Ave	601 Terrace, Suite 100 Muskegon MI	0.000	6470-New Freedom Projects	New freedom	NI	\$69,850	\$0	\$69,850	\$139,700	5310	Transit	exempt	
2023	Multi-Modal	206963	Transit Operating	West Michigan Metropolitan	Muskegon	Pioneer Resources - Muskegon	Wesley Ave	601 Terrace, Suite 100 Muskegon MI	0.000	6460-JARC Projects	JARC	NI	\$46,585	\$46,585	\$0	\$93,170	5311	Transit	exempt	
2023	Multi-Modal	207044	Transit Operating	West Michigan Metropolitan	Muskegon	Muskegon County Board of Commissioners	6th St	2624 Sixth Street	0.000	SP3000-operating except JARC and New Freedom	Operating assistance for delivery of transit and paratransit services	NI	\$1,777,156	\$1,137,380	\$639,776	\$3,554,312	5307	Transit	exempt	
2023	Multi-Modal	207049	Transit Operating	West Michigan Metropolitan	Muskegon	Muskegon County Board of Commissioners	6th St	2624 Sixth Street	0.000	3000-Operating Assistance	operating assistance for the delivery of non-urban transit services	NI	\$18,000	\$18,000	\$0	\$36,000	5311	Transit	exempt	
2023	Multi-Modal	207682	Transit Operating	West Michigan Metropolitan	Ottawa	Harbor Transit Multi-Model Transportation System	Transit Operating	areawide	0.000	SP3000-operating except JARC and New Freedom	Operating assistance	NI	\$535,000	\$0	\$535,000	\$1,070,000	5307	Transit	exempt	
2024	Multi-Modal	214097	Transit Operating	West Michigan Metropolitan	Muskegon	Muskegon County Board of Commissioners	Transit Capital	Areawide	0.000</											

WestPlan Project List for 2023 to 2026 TIP for Muskegon and Ottawa Counties

Fiscal Year	Job Type	Job#	GPA Type	MPO	County	Responsible Agency	Project Name	Limits	Length	Primary Work Type	Project Description	Phase	Fed Estimated Amount	State Estimated	Local Estimated	Total Estimated Amount	Fund Source	Template Name	Air Quality	Air Quality comment
2024	Trunkline	215033	Trunkline Bridge	West Michigan Metropolitan	Muskegon	MDOT	US-31 S	4 Structures along US-31 NB/SB over Colby Road & Walsh Road	0.000	Bridge CPM	Epoxy Overlay	PE	\$220,995	\$49,005	\$0	\$270,000	BFP	Bridge Replacement and Preservation	exempt	
2024	Trunkline	215033	Trunkline Bridge	West Michigan Metropolitan	Muskegon	MDOT	US-31 S	4 Structures along US-31 NB/SB over Colby Road & Walsh Road	0.000	Bridge CPM	Epoxy Overlay	PES	\$220,995	\$49,005	\$0	\$270,000	BFP	Bridge Replacement and Preservation	exempt	
2026	Trunkline	211173	Trunkline Road	West Michigan Metropolitan	Ottawa	MDOT	I-96 EB	From Airline Road east to Apple Drive	4.678	Road Rehabilitation	Milling and Two Course Asphalt Resurfacing	CON	\$1,973,700	\$219,300	\$0	\$2,193,000	IM	Road - Rehabilitation and Reconstruction	exempt	
2023	Trunkline	127478	Trunkline Traffic Operations And Safety	West Michigan Metropolitan	Ottawa	MDOT	US-31	At Pierce Street, Winans Street and 158th Avenue	1.048	Traffic Safety	Indirect Left Turn Lanes	CON	\$708,003	\$156,997	\$0	\$865,000	CM	Operations	exempt	Roads not in travel demand model. Reviewed at Nov. 9, 2021 MITC-IAWG
2024	Trunkline	209373	Trunkline Traffic Operations And Safety	West Michigan Metropolitan	Muskegon	MDOT	M-46	M-46 (Apple) - Six signal locations in Muskegon County	0.000	Traffic Safety	Modernizing signalized intersection to current standards	CON	\$2,430,686	\$0	\$0	\$2,430,686	STG	Traffic Signal Modernization	exempt	

GVMC Project List for 2023 to 2026 TIP for Kent and Ottawa Counties

Fiscal Year	Job Type	Job#	GPA Type	MPO	County	Responsible Agency	Project Name	Limits	Length	Primary Work Type	Project Description	Phase	Fed Estimated Amount	State Estimated	Local Estimated	Calculated Total	Fund Source	Air Quality	Air Quality Comment
2023	Local	205691	Local Road	Grand Valley Metropolitan Council (GVMC)	Kent	Wyoming	Gezon Pkwy SW	Byron Center to Clyde Park and 54th from Clyde Park to Division	3.175	Road Rehabilitation	Mill and Resurface and new through/right turn at EB Clyde Park Ave	CON	\$777,575	\$0	\$172,425	\$950,000	ST	Exempt	thru/right turn lane less than half a mile
2023	Local	205691	Local Road	Grand Valley Metropolitan Council (GVMC)	Kent	Wyoming	Gezon Pkwy SW	Byron Center to Clyde Park and 54th from Clyde Park to Division	3.175	Road Rehabilitation	Mill and Resurface and new through/right turn at EB Clyde Park Ave	CON	\$903,259	\$0	\$560,483	\$1,463,742	STU	Exempt	thru/right turn lane less than half a mile
2023	Local	205691	Local Road	Grand Valley Metropolitan Council (GVMC)	Kent	Wyoming	Gezon Pkwy SW	Byron Center to Clyde Park and 54th from Clyde Park to Division	3.175	Road Rehabilitation	Mill and Resurface and new through/right turn at EB Clyde Park Ave	CON	\$1,327,000	\$0	\$294,258	\$1,621,258	ST	Exempt	thru/right turn lane less than half a mile
2023	Trunkline	210072	S/TIP Line items	Grand Valley Metropolitan Council (GVMC)	Kent	MDOT	US-131	From Allegan/Kent County Line north to 76th Street	4.038	Reconstruction	Reconstruction, Add Weave/Merge Lanes	CON	\$100,000	\$39,900,000	\$0	\$40,000,000	RBMP,NH	exempt	connecting entrance and exit ramps to improve safety and operational - no new thru lanes
2024	Trunkline	210063	S/TIP Line items	Grand Valley Metropolitan Council (GVMC)	Kent	MDOT	M-37	From 92nd Street north to 76th Street	2.875	Road Rehabilitation	Crush and Shape, Widening	CON	\$26,192,000	\$5,808,000	\$0	\$32,000,000	ST	non-exempt	widen section of roadway from a 3 lane section to a full boulevard (2 thru lanes in each direction)
2025	Trunkline	200652	Trunkline Traffic Operations And Safety	Grand Valley Metropolitan Council (GVMC)	Kent	MDOT	M-37 SB	60th Street to Patterson Avenue (N Junction)	0.666	Minor Widening	Extend 3rd lane from 60th St north to Patterson Ave (N Jct)	CON	\$1,517,499	\$321,359	\$15,142	\$1,854,000	NH	exempt	IAWG discussed project, it is connecting a few turn lanes into a continuous right turn lane and determined it was not adding capacity and should be classified as exempt
2023	Local	205589	Local Road	Grand Valley Metropolitan Council (GVMC)	Kent	Cedar Springs	S Main St NE	Church Street to 18 Mile Road	0.737	Road Rehabilitation	Milling and Two Course Asphalt Resurfacing	CON	\$395,949	\$0	\$87,801	\$483,750	STU	Exempt	
2023	Local	205601	Local Road	Grand Valley Metropolitan Council (GVMC)	Kent	Grand Rapids	Ball Ave NE	Leonard Street to Knapp Street	1.002	Road Capital Preventive Maintenance	Milling an Asphalt Overlay (1.5 Inches)	CON	\$427,753	\$0	\$1,537,833	\$1,965,586	STU	Exempt	
2023	Local	205602	Local Road	Grand Valley Metropolitan Council (GVMC)	Kent	Grand Rapids	Ball Ave NE	Michigan to Olson and Olson Street - Ball to Plymouth	0.543	Road Rehabilitation	Milling and Two Course Asphalt Resurfacing	CON	\$275,335	\$0	\$656,453	\$931,788	STU	Exempt	
2023	Local	205657	Local Road	Grand Valley Metropolitan Council (GVMC)	Kent	Grand Rapids	Fuller Ave NE	Knapp Street to 3 Mile Road	0.989	Road Capital Preventive Maintenance	Milling and Asphalt Overlay (1.5 Inches)	CON	\$427,753	\$0	\$1,279,667	\$1,707,420	STU	Exempt	
2023	Local	205664	Local Road	Grand Valley Metropolitan Council (GVMC)	Kent	Grand Rapids	Turner Ave NW	6th Street to US-131 SB On Ramp and US-131 SB Off Ramp to Richmond Street	0.813	Road Capital Preventive Maintenance	Milling and Asphalt Overlay (1.5 inches)	CON	\$344,169	\$0	\$1,050,939	\$1,395,108	STU	Exempt	
2023	Local	206467	Local Traffic Operations And Safety	Grand Valley Metropolitan Council (GVMC)	Kent	Grand Rapids	Market Ave SW	Market Avenue	0.088	Traffic Safety	Signal Optimization	CON	\$240,000	\$0	\$60,000	\$300,000	CM	Exempt	
2023	Local	207503	Local Traffic Operations And Safety	Grand Valley Metropolitan Council (GVMC)	Kent	Grand Rapids	Market Ave SW	Market Avenue	0.055	ITS Applications	Regional Signal System TMS Operations	OPS	\$528,000	\$0	\$132,000	\$660,000	CM	Exempt	
2023	Local	205658	S/TIP Line items	Grand Valley Metropolitan Council (GVMC)	Kent	Grand Rapids	Fuller Ave SE	Kalamazoo Street to Adams Street	0.281	Reconstruction	Asphalt Reconstruct	CON	\$344,169	\$0	\$1,100,000	\$1,444,169	STU	Exempt	
2023	Local	205661	S/TIP Line items	Grand Valley Metropolitan Council (GVMC)	Kent	Grand Rapids	Ottawa Ave NW	Newberry Street to Mason Street and Walbridge Street to Coldbrook Street	0.263	Reconstruction	Asphalt Reconstruct	CON	\$712,922			\$712,922	STU	Exempt	
2023	Local	205666	S/TIP Line items	Grand Valley Metropolitan Council (GVMC)	Kent	Grand Rapids	Wealthy St SE	Ethel Avenue to East City Limit	0.159	Reconstruction	Concrete Reconstruction (and Brick)	CON	\$786,672	\$0	\$2,180,000	\$2,966,672	STU	Exempt	
2023	Local	205698	S/TIP Line items	Grand Valley Metropolitan Council (GVMC)	Kent	Grand Rapids	Robinson Rd SE	Lake Drive to Plymouth Avenue	0.532	Reconstruction	Reconstruct/Preventative Maintenance	CON	\$358,094	\$0	\$79,406	\$437,500	STU	Exempt	

GVMC Project List for 2023 to 2026 TIP for Kent and Ottawa Counties

Fiscal Year	Job Type	Job#	GPA Type	MPO	County	Responsible Agency	Project Name	Limits	Length	Primary Work Type	Project Description	Phase	Fed Estimated Amount	State Estimated	Local Estimated	Calculated Total	Fund Source	Air Quality	Air Quality Comment
2023	Local	205698	S/TIP Line items	Grand Valley Metropolitan Council (GVMC)	Kent	Grand Rapids	Robinson Rd SE	Lake Drive to Plymouth Avenue	0.532	Reconstruction	Reconstruct/Preventative Maintenance	CON	\$290,425	\$0	\$2,140,575	\$2,431,000	ST	Exempt	
2023	Local	212553	S/TIP Line items	Grand Valley Metropolitan Council (GVMC)	Kent	Grand Rapids	Monroe Ave NW	Monroe Avenue NW (Leonard Street to Ann Street), Grand Rapids	0.801	New Facilities	Construct one mile of nonmotorized shared use pathway.	CON	\$806,735	\$0	\$1,093,139	\$1,899,874	TA	Exempt	
2023	Local	214335	S/TIP Line items	Grand Valley Metropolitan Council (GVMC)	Kent	Grand Rapids	Turner Ave NW	4th St NW to Ann St NW	1.459	Roadside Facilities - Improve	Construction of separated two-way bikeway	CON	\$492,720	\$0	\$109,259	\$601,979	CRU	Exempt	
2023	Local			Grand Valley Metropolitan Council (GVMC)	Kent	Grand Rapids	Ken-O-Sha Drive Sidewalk (North side)	Eastern Ave to 1850 ft east of Eastern Avenue	0.350	Roadside Facilities - Improve	Construction of sidewalk on north side at Ken-O-Sha Drive. This project supports the vision, goals and objectives (connectivity) of the City of Grand Rapids VITAL STREETS PLAN (2016)	CON	\$179,834		\$44,959	\$224,793	TAU	Exempt	
2023	Local			Grand Valley Metropolitan Council (GVMC)	Kent	Grand Rapids	Covell Avenue Sidewalk	Richmond Street to Walker Avenue	0.090	Roadside Facilities - Improve	Construction of sidewalk along Covell Avenue. This project supports the vision, goals and objectives (connectivity) of the City of Grand Rapids VITAL STREETS PLAN (2016)	CON	\$129,000		\$32,250	\$161,250	TAU	Exempt	
2023	Local			Grand Valley Metropolitan Council (GVMC)	Kent	Grand Rapids	Covell Avenue Sidewalk	Lake Michigan Drive to Bridge Street	0.037879	Roadside Facilities - Improve	Construction of sidewalk along Covell Avenue. This project supports the vision, goals and objectives (connectivity) of the City of Grand Rapids VITAL STREETS PLAN (2016)	CON	\$43,000		\$10,750	\$53,750	TAU	Exempt	
2023	Local			Grand Valley Metropolitan Council (GVMC)	Kent	Grand Rapids	Eastern Ave SE / Plaster Creek Trail Pedestrian Hybrid Beacon Crossing	At Plaster Creek Trail		Roadside Facilities - Improve	Construction of PHB, related curb/gutter and ADA work	CON	\$201,586		\$50,397	\$251,983	TAU	Exempt	
2023	Local	205673	S/TIP Line items	Grand Valley Metropolitan Council (GVMC)	Kent	Grand Valley Metropolitan Council	Areawide	GVMC Planning Area	0.000	Planning, Research & Design	Planning Studies	NI	\$150,000	\$0	\$37,500	\$187,500	STU	Exempt	
2023	Local	206215	S/TIP Line items	Grand Valley Metropolitan Council (GVMC)	Kent	Grand Valley Metropolitan Council	Front Ave NW	GVMC--Kent and Eastern Ottawa County	0.000	Planning, Research & Design	Clean Air Action educational campaign	NI	\$131,654	\$0	\$32,914	\$164,568	CM	Exempt	
2023	Local	205702	Local Road	Grand Valley Metropolitan Council (GVMC)	Kent	Grandville	Ivanrest Ave SW	Prairie Street to 28th Street	0.502	Road Capital Preventive Maintenance	Milling and Asphalt Resurface	CON	\$229,180	\$0	\$50,820	\$280,000	STU	Exempt	
2023	Local	206352	Local Traffic Operations And Safety	Grand Valley Metropolitan Council (GVMC)	Ottawa	Hudsonville	32nd Ave	32nd Avenue	0.210	Minor Widening	Left Turn Lane	CON	\$220,800	\$0	\$105,200	\$326,000	CM	Exempt	
2023	Local	212261	Local Bridge	Grand Valley Metropolitan Council (GVMC)	Kent	Kent County	18 Mile Road	18 Mile Road, Str #5036 over the Rogue River, Kent County.	0.000	Bridge Rehabilitation	Bridge Rehabilitation	CON	\$370,400	\$69,450	\$23,150	\$463,000	BO	Exempt	
2023	Local	205701	Local Road	Grand Valley Metropolitan Council (GVMC)	Kent	Kent County	Buttrick Ave SE	Thornapple River Drive to Grand River Drive	0.392	Road Rehabilitation	Crush and Shape Resurfacing	CON	\$245,550	\$0	\$54,450	\$300,000	STU	Exempt	
2023	Local	205712	Local Road	Grand Valley Metropolitan Council (GVMC)	Kent	Kent County	Northland Dr NE	12 Mile Road to 14 Mile Road	2.228	Road Rehabilitation	Mill, Fill, and Resurface	CON	\$0	\$1,656,614	\$420,000	\$2,076,614	EDC	Exempt	
2023	Local	205671	S/TIP Line items	Grand Valley Metropolitan Council (GVMC)	Kent	Kent County	84th St SE	Patterson Avenue to East Paris Avenue	0.999	Reconstruction	Asphalt Reconstruct	CON	\$1,104,975	\$0	\$245,025	\$1,350,000	STU	Exempt	
2023	Local	214069	S/TIP Line items	Grand Valley Metropolitan Council (GVMC)	Kent	Kent County	84th St SE	84th Street at Kalamazoo Avenue, Kent County	0.651	Traffic Safety	Roundabout	CON	\$600,000	\$0	\$150,000	\$750,000	HSIP	Exempt	
2023	Local	214069	S/TIP Line items	Grand Valley Metropolitan Council (GVMC)	Kent	Kent County	84th St SE	84th Street at Kalamazoo Avenue, Kent County	0.651	Traffic Safety	Roundabout	CON	\$332,721	\$0	\$195,333	\$528,054	CRU	Exempt	
2023	Local	215916	S/TIP Line items	Grand Valley Metropolitan Council (GVMC)	Kent	Kent County	100th St SE	East Paris to Patterson	1.003	Reconstruction	Reconstruction	CON	\$991,000	\$0	\$409,000	\$1,400,000	STL	Exempt	

GVMC Project List for 2023 to 2026 TIP for Kent and Ottawa Counties

Fiscal Year	Job Type	Job#	GPA Type	MPO	County	Responsible Agency	Project Name	Limits	Length	Primary Work Type	Project Description	Phase	Fed Estimated Amount	State Estimated	Local Estimated	Calculated Total	Fund Source	Air Quality	Air Quality Comment
2023	Local			Grand Valley Metropolitan Council (GVMC)	Kent	Kent County	Coit Sidewalk	Woodworth Street to 4 Mile Road	0.7	Roadside Facilities - Improve	Sidewalk	CON	\$160,000		\$40,000	\$200,000	TAU	Exempt	
2023	Local	205689	Local Road	Grand Valley Metropolitan Council (GVMC)	Kent	Kentwood	52nd St SE	Kalamazoo Avenue to Breton Avenue	1.502	Road Rehabilitation	3.5" Milling and Resurface	CON	\$1,514,225	\$0	\$335,775	\$1,850,000	STU	Exempt	
2023	Local	209777	S/TIP Line items	Grand Valley Metropolitan Council (GVMC)	Kent	Lowell	Bowes Rd SE	South of Bowes Rd (at Main St) to South Hudson Street, City of Lowell	1.788	New Facilities	Construct River Valley Rail Trail Connection	CON	\$707,000	\$0	\$103,000	\$810,000	TA	Exempt	
2023	Local	209777	S/TIP Line items	Grand Valley Metropolitan Council (GVMC)	Kent	Lowell	Bowes Rd SE	South of Bowes Rd (at Main St) to South Hudson Street, City of Lowell	1.788	New Facilities	Construct River Valley Rail Trail Connection	CON	\$300,000	\$0	\$0	\$300,000	NRT	Exempt	
2023	Local	205676	Local Road	Grand Valley Metropolitan Council (GVMC)	Ottawa	Ottawa County	18th Ave	Chicago Drive to Bauer Road	2.313	Road Rehabilitation	Asphalt Resurface	CON	\$798,037	\$0	\$176,963	\$975,000	STU	Exempt	
2023	Local	207042	Local Road	Grand Valley Metropolitan Council (GVMC)	Ottawa	Ottawa County	Leonard St	Leonard St from 88th Ave to 68th Ave	2.814	Road Capital Preventive Maintenance	Asphalt overlay 1-1.5 inches, will include HMA resurfacing with the construct	CON	\$718,000	\$0	\$488,821	\$1,206,821	STL	Exempt	
2023	Local	207042	Local Road	Grand Valley Metropolitan Council (GVMC)	Ottawa	Ottawa County	Leonard St	Leonard St from 88th Ave to 68th Ave	2.814	Road Capital Preventive Maintenance	Asphalt overlay 1-1.5 inches, will include HMA resurfacing with the construct	CON	\$0	\$73,179	\$0	\$73,179	EDD	Exempt	
2023	Local	212262	S/TIP Line items	Grand Valley Metropolitan Council (GVMC)	Ottawa	Ottawa County	Hayes Street	Hayes Street, Str #8838 over Branch of Sand Creek, Ottawa County	0.000	Bridge Replacement	Bridge Replacement	CON	\$1,020,800	\$63,800	\$191,400	\$1,276,000	BO	Exempt	
2023	Local	206388	Local Road	Grand Valley Metropolitan Council (GVMC)	Kent	Rockford	Courtland St NE	Monroe to Wolverine	0.888	Road Rehabilitation	Resurface	CON	\$405,157	\$0	\$599,843	\$1,005,000	STU	Exempt	
2023	Local	205696	Local Road	Grand Valley Metropolitan Council (GVMC)	Kent	Walker	Alpine Ave NW	Ann Street to Hillside Drive	0.503	Road Rehabilitation	Milling and Resurface	CON	\$654,800	\$0	\$145,200	\$800,000	STU	Exempt	
2023	Local	212755	S/TIP Line items	Grand Valley Metropolitan Council (GVMC)	Kent	Walker	Bristol Ave NW	Under Bristol Railroad Bridge	0.062	Minor Widening	Widen to 2 Lanes	CON	\$712,500	\$0	\$237,500	\$950,000	HICU	Exempt	current road under bridge is one lane will widen to two full lane to match road on either side.
2023	Multi-Modal	206863	S/TIP Line items	Grand Valley Metropolitan Council (GVMC)	Kent	Interurban Transit Partnership	Transit Capital	Areawide	0.000	SP1408-maintenance equipment (hoists, tools, etc.)	FY2023 Urbanized Area Formula Grants	NI	\$36,000	\$9,000	\$0	\$45,000	5307	Exempt	
2023	Multi-Modal	206863	S/TIP Line items	Grand Valley Metropolitan Council (GVMC)	Kent	Interurban Transit Partnership	Transit Capital	Areawide	0.000	SP1301-bus shelter construction	FY2023 Urbanized Area Formula Grants	NI	\$80,000	\$20,000	\$0	\$100,000	5307	Exempt	
2023	Multi-Modal	206863	S/TIP Line items	Grand Valley Metropolitan Council (GVMC)	Kent	Interurban Transit Partnership	Transit Capital	Areawide	0.000	SP1802-capital cost of contracting	FY2023 Urbanized Area Formula Grants	NI	\$560,000	\$140,000	\$0	\$700,000	5307	Exempt	
2023	Multi-Modal	206863	S/TIP Line items	Grand Valley Metropolitan Council (GVMC)	Kent	Interurban Transit Partnership	Transit Capital	Areawide	0.000	SP1104-40 foot and greater replacement bus with or without lift	FY2023 Urbanized Area Formula Grants	NI	\$5,683,222	\$1,420,805	\$0	\$7,104,027	5307	Exempt	
2023	Multi-Modal	206863	S/TIP Line items	Grand Valley Metropolitan Council (GVMC)	Kent	Interurban Transit Partnership	Transit Capital	Areawide	0.000	SP1102-30-34 foot replacement bus with or without lift	FY2023 Urbanized Area Formula Grants	NI	\$1,235,712	\$308,928	\$0	\$1,544,640	5307	Exempt	
2023	Multi-Modal	206863	S/TIP Line items	Grand Valley Metropolitan Council (GVMC)	Kent	Interurban Transit Partnership	Transit Capital	Areawide	0.000	SP1203-admin/maintenance facility improvements	FY2023 Urbanized Area Formula Grants	NI	\$16,000	\$4,000	\$0	\$20,000	5307	Exempt	
2023	Multi-Modal	206863	S/TIP Line items	Grand Valley Metropolitan Council (GVMC)	Kent	Interurban Transit Partnership	Transit Capital	Areawide	0.000	SP1401-bus equipment (spare, tires, windshields, lifts, bus wraps, bike rack, ADA)	FY2023 Urbanized Area Formula Grants	NI	\$1,577,449	\$394,362	\$0	\$1,971,811	5307	Exempt	
2023	Multi-Modal	206863	S/TIP Line items	Grand Valley Metropolitan Council (GVMC)	Kent	Interurban Transit Partnership	Transit Capital	Areawide	0.000	SP1402-fare collection	FY2023 Urbanized Area Formula Grants	NI	\$192,000	\$48,000	\$0	\$240,000	5307	Exempt	
2023	Multi-Modal	206863	S/TIP Line items	Grand Valley Metropolitan Council (GVMC)	Kent	Interurban Transit Partnership	Transit Capital	Areawide	0.000	SP1409-administrative vehicle	FY2023 Urbanized Area Formula Grants	NI	\$120,000	\$30,000	\$0	\$150,000	5307	Exempt	
2023	Multi-Modal	206863	S/TIP Line items	Grand Valley Metropolitan Council (GVMC)	Kent	Interurban Transit Partnership	Transit Capital	Areawide	0.000	SP1803-planning/studies	FY2023 Urbanized Area Formula Grants	NI	\$160,000	\$40,000	\$0	\$200,000	5307	Exempt	

GVMC Project List for 2023 to 2026 TIP for Kent and Ottawa Counties

Fiscal Year	Job Type	Job#	GPA Type	MPO	County	Responsible Agency	Project Name	Limits	Length	Primary Work Type	Project Description	Phase	Fed Estimated Amount	State Estimated	Local Estimated	Calculated Total	Fund Source	Air Quality	Air Quality Comment
2023	Multi-Modal	206863	S/TIP Line items	Grand Valley Metropolitan Council (GVMC)	Kent	Interurban Transit Partnership	Transit Capital	Areawide	0.000	SP1406-security equipment - facilities	FY2023 Urbanized Area Formula Grants	NI	\$120,000	\$30,000	\$0	\$150,000	5307	Exempt	
2023	Multi-Modal	206863	S/TIP Line items	Grand Valley Metropolitan Council (GVMC)	Kent	Interurban Transit Partnership	Transit Capital	Areawide	0.000	SP1404-computers (hardware and software)	FY2023 Urbanized Area Formula Grants	NI	\$281,200	\$70,300	\$0	\$351,500	5307	Exempt	
2023	Multi-Modal	206863	S/TIP Line items	Grand Valley Metropolitan Council (GVMC)	Kent	Interurban Transit Partnership	Transit Capital	Areawide	0.000	SP1305-bus stop improvements	FY2023 Urbanized Area Formula Grants	NI	\$8,000	\$2,000	\$0	\$10,000	5307	Exempt	
2023	Multi-Modal	212886	S/TIP Line items	Grand Valley Metropolitan Council (GVMC)	Kent	Interurban Transit Partnership	Transit Project	areawide	0.000	SP1803-planning/studies	FY23 HIP COVID Relief- Regional Transit Master Plan	NI	\$285,000	\$0	\$0	\$285,000	HICU	Exempt	
2023	Multi-Modal	206866	Transit Capital	Grand Valley Metropolitan Council (GVMC)	Kent	Interurban Transit Partnership	Transit capital	Areawide	0.000	SP1104-40 foot and greater replacement bus with or without lift	FY 2023 Bus/Bus Facilities Program	NI	\$1,010,564	\$252,641	\$0	\$1,263,205	5339	Exempt	
2023	Multi-Modal	207818	Transit Capital	Grand Valley Metropolitan Council (GVMC)	Kent	Interurban Transit Partnership	Transit Capital	Areawide	0.000	SP1104-40 foot and greater replacement bus with or without lift	FY23 CMAQ - Replacement 40' Buses/CNG	NI	\$340,000	\$85,000	\$0	\$425,000	CM	Exempt	
2023	Multi-Modal	207819	Transit Capital	Grand Valley Metropolitan Council (GVMC)	Kent	Interurban Transit Partnership	Transit Operating	Areawide	0.000	SP1701-rideshare	FY23 CMAQ - Rideshare	NI	\$186,207	\$0	\$0	\$186,207	CMG	Exempt	
2023	Multi-Modal	207821	Transit Capital	Grand Valley Metropolitan Council (GVMC)	Kent	Interurban Transit Partnership	Transit Capital	Areawide	0.000	SP1105-van replacement, any size with or without lift	FY23 CMAQ - Replacement VanPool Vans	NI	\$99,441	\$24,860	\$0	\$124,301	CM	Exempt	
2023	Multi-Modal	207822	Transit Capital	Grand Valley Metropolitan Council (GVMC)	Kent	Interurban Transit Partnership	Transit Operating	Areawide	0.000	SP1702-ozone action	FY23 CMAQ - Free Rides on Clean Air Action Days	NI	\$80,000	\$20,000	\$0	\$100,000	CM	Exempt	
2023	Trunkline	200112	S/TIP Line items	Grand Valley Metropolitan Council (GVMC)	Kent	MDOT	M-6	From East Branch Rush Creek east to Burlingame Avenue	2.831	Road Rehabilitation	Concrete Pavement Inlay	CON	\$10,428,509	\$2,312,492	\$0	\$12,741,001	NH	Exempt	
2023	Trunkline	204951	S/TIP Line items	Grand Valley Metropolitan Council (GVMC)	Kent	MDOT	Regionwide	Kent and Ottawa	0.000	Traffic Safety	Install traffic signal dilemma zone systems	CON	\$345,020	\$38,336	\$0	\$383,356	HSIP	Exempt	
2023	Trunkline	207358	S/TIP Line items	Grand Valley Metropolitan Council (GVMC)	Kent	MDOT	Regionwide	All trunkline routes of GVMC MPO	1.845	Traffic Safety	Longitudinal pavement marking application on trunklines in Grand Region	PE	\$2,205	\$245	\$0	\$2,450	HSIP	Exempt	
2023	Trunkline	207358	S/TIP Line items	Grand Valley Metropolitan Council (GVMC)	Kent	MDOT	Regionwide	All trunkline routes of GVMC MPO	1.845	Traffic Safety	Longitudinal pavement marking application on trunklines in Grand Region	CON	\$628,425	\$69,825	\$0	\$698,250	HSIP	Exempt	
2023	Trunkline	207359	S/TIP Line items	Grand Valley Metropolitan Council (GVMC)	Kent	MDOT	Regionwide	All trunkline routes of GVMC MPO	1.845	Traffic Safety	Special pavement marking application on trunklines in Grand Region	PE	\$2,205	\$245	\$0	\$2,450	HSIP	Exempt	
2023	Trunkline	207359	S/TIP Line items	Grand Valley Metropolitan Council (GVMC)	Kent	MDOT	Regionwide	All trunkline routes of GVMC MPO, All trunkline routes of GVMC MPO	1.845	Traffic Safety	Special pavement marking application on trunklines in Grand Region	CON	\$108,045	\$12,005	\$0	\$120,050	HSIP	Exempt	
2023	Trunkline	207375	S/TIP Line items	Grand Valley Metropolitan Council (GVMC)	Kent	MDOT	Regionwide	All trunkline routes of GVMC MPO	2.971	Traffic Safety	Pavement marking retroreflectivity readings on trunklines in Grand Region	CON	\$3,528	\$392	\$0	\$3,920	HSIP	Exempt	
2023	Trunkline	208927	S/TIP Line items	Grand Valley Metropolitan Council (GVMC)	Kent	MDOT	M-44 CONN	From I-96 north to Airway Street	2.665	Road Rehabilitation	Milling and Two Course Asphalt Resurfacing	PE	\$245,550	\$53,633	\$817	\$300,000	NH	Exempt	
2023	Trunkline	209604	S/TIP Line items	Grand Valley Metropolitan Council (GVMC)	Kent	MDOT	M-6 / Holstege Wetland Mitigation Site	M-6 / Holstege Wetland Mitigation Site	0.000	Environmental	Wetland Mitigation Site Access and Additional Wetland Restoration	CON	\$270,105	\$59,895	\$0	\$330,000	ST	Exempt	
2023	Trunkline	213211	S/TIP Line items	Grand Valley Metropolitan Council (GVMC)	Kent	MDOT	I-96	M-37/M-44 (East Beltline) over I-96 from GRE Railroad to Bradford Street	0.335	Bridge Replacement	Bridge Replacement of S10-41025 & Road Reconstruction of bridge approaches	ROW	\$40,925	\$7,941	\$1,134	\$50,000	NH	Exempt	

GVMC Project List for 2023 to 2026 TIP for Kent and Ottawa Counties

Fiscal Year	Job Type	Job#	GPA Type	MPO	County	Responsible Agency	Project Name	Limits	Length	Primary Work Type	Project Description	Phase	Fed Estimated Amount	State Estimated	Local Estimated	Calculated Total	Fund Source	Air Quality	Air Quality Comment
2023	Trunkline	215066	S/TIP Line Items	Grand Valley Metropolitan Council (GVMC)	Kent	MDOT	US-131 NB/I-96 WB	Two Structures along the US-131 NB Ramp to I-96 WB	0.000	Bridge Rehabilitation	Bridge Rehabilitation	CON	\$5,037,300	\$559,700	\$0	\$5,597,000	BFPI	Exempt	
2023	Trunkline	201305	Trunkline Bridge	Grand Valley Metropolitan Council (GVMC)	Kent	MDOT	I-96	Fruit Ridge Road Over I-96	0.000	Bridge Rehabilitation	Deep Overlay	CON	\$1,337,063	\$148,563	\$0	\$1,485,626	IM	Exempt	
2023	Trunkline	204412	Trunkline Bridge	Grand Valley Metropolitan Council (GVMC)	Kent	MDOT	I-96	under Segwun Ave SE, Lowell Township, Kent County	0.000	Bridge Rehabilitation	Shallow overlay and substructure repair.	CON	\$767,700	\$85,300	\$0	\$853,000	BOI	Exempt	
2023	Trunkline	210818	Trunkline Road	Grand Valley Metropolitan Council (GVMC)	Kent	MDOT	I-96	Whitneyville Avenue east to the Kent/Ionia County Line	8.346	Road Capital Preventive Maintenance	Full Depth Concrete Pavement Repair	CON	\$1,727,854	\$383,147	\$0	\$2,111,001	NH	Exempt	
2023	Trunkline	201531	Trunkline Traffic Operations And Safety	Grand Valley Metropolitan Council (GVMC)	Kent	MDOT	Regionwide	Various locations in Grand Region	0.000	ITS Applications	2023 West Michigan TOC Control Room Operations	OPS	\$1,344,954	\$298,240	\$0	\$1,643,194	CM	Exempt	
2023	Trunkline	201535	Trunkline Traffic Operations And Safety	Grand Valley Metropolitan Council (GVMC)	Kent	MDOT	Regionwide	Regionwide	0.000	ITS Applications	2023 ITS maintenance and operations in Grand Region	OPS	\$900,350	\$199,650	\$0	\$1,100,000	CM	Exempt	
2023	Trunkline	201942	Trunkline Traffic Operations And Safety	Grand Valley Metropolitan Council (GVMC)	Kent	MDOT	US-131	US-131 from 44th to Post	11.605	Traffic Safety	Queue management system	CON	\$1,605,035	\$178,337	\$0	\$1,783,372	HSIP	Exempt	
2023	Trunkline	209412	Trunkline Traffic Operations And Safety	Grand Valley Metropolitan Council (GVMC)	Kent	MDOT	M-57	Northland Dr to Farland Ave	3.917	Traffic Safety	Shoulder Paving with Shoulder Rumble Strips	PE	\$200,700	\$22,300	\$0	\$223,000	HSIP	Exempt	
2023	Trunkline	213573	Trunkline Traffic Operations And Safety	Grand Valley Metropolitan Council (GVMC)	Kent	MDOT	Front Ave NW	Kent County	0.000	ITS Applications	2023 Safety Service Patrol Operations - Grand Region	OPS	\$253,735	\$56,265	\$0	\$310,000	NH	Exempt	
2023	Trunkline	213928	Trunkline Traffic Operations And Safety	Grand Valley Metropolitan Council (GVMC)	Kent	MDOT	Leonard St NE	TSCWIDE	13.634	Traffic Safety	Non-freeway signing upgrade	PE	\$32,250	\$0	\$0	\$32,250	STG	Exempt	
2024	Local	214473	Local Bridge	Grand Valley Metropolitan Council (GVMC)	Kent	Grand Rapids	Pearl St NW	Pearl Street, Str#5186, over the Grand River	0.000	Bridge CPM	Bridge Capital Preventative Maintenance	CON	\$260,000	\$0	\$65,000	\$325,000	BHT	Exempt	
2024	Local	214474	Local Bridge	Grand Valley Metropolitan Council (GVMC)	Kent	Grand Rapids	Burton St SW	Burton Street, Str#5094, and Hall Street, Str#5210, over CSX Railroad	0.000	Bridge CPM	Bridge Capital Preventative Maintenance	CON	\$97,600	\$0	\$24,400	\$122,000	BHT	Exempt	
2024	Local	214474	Local Bridge	Grand Valley Metropolitan Council (GVMC)	Kent	Grand Rapids	Burton St SW	Burton Street, Str#5094, and Hall Street, Str#5210, over CSX Railroad	0.000	Bridge CPM	Bridge Capital Preventative Maintenance	CON	\$129,600	\$0	\$32,400	\$162,000	BHT	Exempt	
2024	Local	216284	Local Road	Grand Valley Metropolitan Council (GVMC)	Kent	Grand Rapids	Knapp St NE	Truxton Dr to East City Limits	1.676	Road Rehabilitation	Milling and Asphalt Overlay (1.5 inches)	CON	\$984,000	\$0	\$2,952,000	\$3,936,000	STU	Exempt	
2024	Local	216286	Local Road	Grand Valley Metropolitan Council (GVMC)	Kent	Grand Rapids	Leonard St NW	Powers Ave to Alpine Ave	0.373	Road Rehabilitation	Milling and Asphalt Overlay (1.5 inches)	CON	\$523,254	\$0	\$364,746	\$888,000	STU	Exempt	
2024	Local	214345	Local Traffic Operations And Safety	Grand Valley Metropolitan Council (GVMC)	Kent	Grand Rapids	Market Ave SW	Market Avenue	0.055	ITS Applications	Regional Signal System TMS Operations	OPS	\$536,000	\$0	\$134,000	\$670,000	CM	Exempt	

GVMC Project List for 2023 to 2026 TIP for Kent and Ottawa Counties

Fiscal Year	Job Type	Job#	GPA Type	MPO	County	Responsible Agency	Project Name	Limits	Length	Primary Work Type	Project Description	Phase	Fed Estimated Amount	State Estimated	Local Estimated	Calculated Total	Fund Source	Air Quality	Air Quality Comment
2024	Local	214346	Local Traffic Operations And Safety	Grand Valley Metropolitan Council (GVMC)	Kent	Grand Rapids	Market Ave SW	Market Avenue	0.055	Traffic Safety	Signal Optimization (up to 120 locations on federal aid roads)	CON	\$240,000	\$0	\$60,000	\$300,000	CRU	Exempt	
2024	Local	216263	S/TIP Line items	Grand Valley Metropolitan Council (GVMC)	Kent	Grand Rapids	Division Ave NE	Fulton St to Michigan St	0.502	Reconstruction	Reconstruction	CON	\$724,000	\$0	\$160,545	\$884,545	ST	Exempt	
2024	Local	216263	S/TIP Line items	Grand Valley Metropolitan Council (GVMC)	Kent	Grand Rapids	Division Ave NE	Fulton St to Michigan St	0.502	Reconstruction	Reconstruction	CON	\$0	\$0	\$9,977,000	\$9,977,000	STU	Exempt	
2024	Local	216283	S/TIP Line items	Grand Valley Metropolitan Council (GVMC)	Kent	Grand Rapids	Grandville Ave SW	Clyde Park Ave to Stolpe Ave	0.221	Reconstruction	Reconstruction	CON	\$609,734	\$0	\$1,329,736	\$1,939,470	STU	Exempt	
2024	Local	216287	S/TIP Line items	Grand Valley Metropolitan Council (GVMC)	Kent	Grand Rapids	Valley Ave NW	Fulton St to Bridge St	0.465	Reconstruction	Reconstruction	CON	\$1,021,621	\$0	\$1,320,183	\$2,341,804	STU	Exempt	
2024	Local	214384	S/TIP Line items	Grand Valley Metropolitan Council (GVMC)	Kent	Grand Valley Metropolitan Council	Areawide	GVMC Planning Area	0.000	Planning, Research & Design	FY2024 Clean Air Action Program	NI	\$80,000	\$0	\$20,000	\$100,000	CM	Exempt	
2024	Local	216303	S/TIP Line items	Grand Valley Metropolitan Council (GVMC)	Kent	Grand Valley Metropolitan Council	Areawide	GVMC Planning Area	0.000	Planning, Research & Design	Planning Studies	NI	\$150,000	\$0	\$37,500	\$187,500	STU	Exempt	
2024	Local	216288	Local Road	Grand Valley Metropolitan Council (GVMC)	Kent	Grandville	Chicago Dr SW	Division to West City Limits	0.763	Road Rehabilitation	Milling and Resurface	CON	\$441,938	\$0	\$183,062	\$625,000	STU	Exempt	
2024	Local	214475	Local Bridge	Grand Valley Metropolitan Council (GVMC)	Kent	Kent County	Countywide	Various Locations - Kent County	0.000	Bridge CPM	Bridge Preventative Maintenance Work	CON	\$76,300	\$0	\$32,700	\$109,000	BO	Exempt	
2024	Local	214475	Local Bridge	Grand Valley Metropolitan Council (GVMC)	Kent	Kent County	Countywide	Various Locations - Kent County	0.000	Bridge CPM	Bridge Preventative Maintenance Work	CON	\$74,200	\$0	\$31,800	\$106,000	BO	Exempt	
2024	Local	214475	Local Bridge	Grand Valley Metropolitan Council (GVMC)	Kent	Kent County	Countywide	Various Locations - Kent County	0.000	Bridge CPM	Bridge Preventative Maintenance Work	CON	\$105,000	\$0	\$45,000	\$150,000	BO	Exempt	
2024	Local	216295	Local Road	Grand Valley Metropolitan Council (GVMC)	Kent	Kent County	60th St SE	Broadmoor Ave to Thornapple River Dr	2.299	Road Rehabilitation	Resurfacing	CON	\$707,100	\$0	\$292,900	\$1,000,000	STU	Exempt	
2024	Local	216299	Local Road	Grand Valley Metropolitan Council (GVMC)	Kent	Kent County	Leffingwell Ave NE	City Limits to Knapp St	0.490	Road Rehabilitation	Resurfacing	CON	\$176,775	\$0	\$73,225	\$250,000	STU	Exempt	
2024	Local	216305	Local Road	Grand Valley Metropolitan Council (GVMC)	Kent	Kent County	60th St SE	Eastern Ave to Kalamazoo Ave	1.004	Road Rehabilitation	Resurfacing	CON	\$0	\$880,000	\$220,000	\$1,100,000	EDC	Exempt	
2024	Local	214449	Local Traffic Operations And Safety	Grand Valley Metropolitan Council (GVMC)	Kent	Kent County	76th St SE	76th @ Broadmoor and Cherry Valley @ Broadmoor	0.421	Traffic Safety	Intersection Improvements	CON	\$520,386	\$0	\$130,097	\$650,483	CM	Exempt	
2024	Local	215977	S/TIP Line items	Grand Valley Metropolitan Council (GVMC)	Kent	Kent County	W River Dr NE	Lamoreaux Drive to Pine Island Drive	1.417	Road Rehabilitation	Resurface	CON	\$366,000	\$0	\$211,000	\$577,000	ST	Exempt	
2024	Local	216297	S/TIP Line items	Grand Valley Metropolitan Council (GVMC)	Kent	Kent County	68th St SE	Kraft Ave to Cherry Valley Ave	0.997	Reconstruction	Reconstruction	CON	\$1,060,650	\$0	\$439,350	\$1,500,000	STU	Exempt	
2024	Local	216298	S/TIP Line items	Grand Valley Metropolitan Council (GVMC)	Kent	Kent County	84th St SE	Kraft Ave to Cherry Valley Ave	0.989	Reconstruction	Reconstruction	CON	\$1,025,295	\$0	\$424,705	\$1,450,000	STU	Exempt	
2024	Local	216306	S/TIP Line items	Grand Valley Metropolitan Council (GVMC)	Kent	Kent County	100th St SE	Patterson Ave to Kraft Ave	1.030	Reconstruction	Reconstruction	CON	\$1,011,000	\$0	\$389,000	\$1,400,000	STL	Exempt	
2024	Local			Grand Valley Metropolitan Council (GVMC)	Kent	Kent County	Crahen Valley Park Trail	Existing Trail near Leonard to Knapp Court	0.8	New Facilities	Sidewalk north side only	CON	\$1,474,985		\$1,601,547	\$3,076,532	TAU	Exempt	
2024	Local	216291	Local Road	Grand Valley Metropolitan Council (GVMC)	Kent	Kentwood	40th St SE	Soundtech Ct to Patterson Ave	0.759	Road Rehabilitation	Milling and Resurface	CON	\$288,497	\$0	\$119,503	\$408,000	STU	Exempt	

GVMC Project List for 2023 to 2026 TIP for Kent and Ottawa Counties

Fiscal Year	Job Type	Job#	GPA Type	MPO	County	Responsible Agency	Project Name	Limits	Length	Primary Work Type	Project Description	Phase	Fed Estimated Amount	State Estimated	Local Estimated	Calculated Total	Fund Source	Air Quality	Air Quality Comment
2024	Local	216292	Local Road	Grand Valley Metropolitan Council (GVMC)	Kent	Kentwood	East Paris Ave SE	Burton St to 28th St	0.998	Road Rehabilitation	Milling and Resurface	CON	\$459,615	\$0	\$190,385	\$650,000	STU	Exempt	
2024	Local	214437	Local Traffic Operations And Safety	Grand Valley Metropolitan Council (GVMC)	Kent	Kentwood	Walma Ave SE	37 Signalized Intersections in Kentwood, 14 signalized intersections in Wal	0.427	ITS Applications	Installation of cell modem, radio and fiber optic communications equipment	CON	\$160,000	\$0	\$40,000	\$200,000	CM	Exempt	
2024	Local	214388	Local Road	Grand Valley Metropolitan Council (GVMC)	Kent	Lowell	Foreman St SE	Gee Drive to Beech	0.539	Road Capital Preventive Maintenance	Mill and Overlay of Foreman	CON	\$385,000	\$0	\$96,250	\$481,250	STUL	Exempt	
2024	Local	214478	Local Bridge	Grand Valley Metropolitan Council (GVMC)	Ottawa	Ottawa County	Hayes St NW	Hayes Street, Str #8839, over Sand Creek Tributary, Ottawa County	0.000	Bridge Rehabilitation	Bridge Rehabilitation	CON	\$802,400	\$0	\$200,600	\$1,003,000	BHT	Exempt	
2024	Local	214813	Local Road	Grand Valley Metropolitan Council (GVMC)	Ottawa	Ottawa County	Fillmore St	96th Avenue to 72nd Avenue	3.049	Road Rehabilitation	Milling and Two Course Asphalt Overlay	CON	\$718,000	\$0	\$273,077	\$991,077	STL	Exempt	
2024	Local	214813	Local Road	Grand Valley Metropolitan Council (GVMC)	Ottawa	Ottawa County	Fillmore St	96th Avenue to 72nd Avenue	3.049	Road Rehabilitation	Milling and Two Course Asphalt Overlay	CON	\$0	\$58,923	\$0	\$58,923	EDD	Exempt	
2024	Local	216301	Local Road	Grand Valley Metropolitan Council (GVMC)	Ottawa	Ottawa County	22nd Ave/Van Buren St/14th Ave	Quincy St to 44th St	3.951	Road Rehabilitation	Milling and Resurface (3' Shoulders/22nd Ave)	CON	\$1,113,683	\$0	\$461,317	\$1,575,000	STU	Exempt	
2024	Local	216302	Local Road	Grand Valley Metropolitan Council (GVMC)	Ottawa	Ottawa County	Van Buren St	48th Ave to 40th Ave	1.002	Road Rehabilitation	Milling and Resurface (3' Paved Shoulders)	CON	\$302,639	\$0	\$125,361	\$428,000	STU	Exempt	
2024	Local	214104	Local Livability and Sustainability	Grand Valley Metropolitan Council (GVMC)	Kent	Sparta	12 Mile Rd NW	Citywide, Safe Routes to School, Sparta, Kent County	1.846	Roadside Facilities - Improve	Safe Routes to School pedestrian improvements, Sparta	CON	\$501,293	\$0	\$0	\$501,293	TA	Exempt	
2024	Local	214528	S/TIP Line Items	Grand Valley Metropolitan Council (GVMC)	Kent	Walker	Center Dr NW	Center Drive at Weatherford	0.134	Reconstruction	Convert intersection to roundabout	CON	\$878,279	\$0	\$321,721	\$1,200,000	CRU	Exempt	
2024	Local	216304	S/TIP Line Items	Grand Valley Metropolitan Council (GVMC)	Kent	Walker	Kinney Ave NW	Leonard St to Lake Michigan Dr	1.007	Reconstruction	Reconstruction (Widen with Curb/Storm and address Sidewalk Gaps)	CON	\$1,353,000	\$0	\$1,347,000	\$2,700,000	ST	Exempt	
2024	Local	216293	Local Road	Grand Valley Metropolitan Council (GVMC)	Kent	Wyoming	Clyde Park Ave SW	36th St to 44th St	1.001	Road Rehabilitation	Milling and Resurface	CON	\$707,100	\$0	\$292,900	\$1,000,000	STU	Exempt	
2024	Local	216294	Local Road	Grand Valley Metropolitan Council (GVMC)	Kent	Wyoming	Kenowa Ave SW	North City Limits to South City Limits	1.434	Road Rehabilitation	Milling and Resurfacing	CON	\$707,100	\$0	\$292,900	\$1,000,000	STU	Exempt	
2024	Multi-Modal	214341	Transit Capital	Grand Valley Metropolitan Council (GVMC)	Kent	Interurban Transit Partnership	Transit Capital	Areawide	0.000	SP1105-van replacement, any size with or without lift	FY 2024 Carbon Reduction Program (CRP) - Replacement Vanpool Vans	NI	\$114,721	\$28,680	\$0	\$143,401	CRU	Exempt	
2024	Multi-Modal	216358	Transit Capital	Grand Valley Metropolitan Council (GVMC)	Kent	Interurban Transit Partnership	Transit Capital	Areawide	0.000	SP1402-fare collection	FY 2024 - Section 5307 - Urbanized Area Formula Grants	NI	\$192,000	\$48,000	\$0	\$240,000	5307	Exempt	
2024	Multi-Modal	216358	Transit Capital	Grand Valley Metropolitan Council (GVMC)	Kent	Interurban Transit Partnership	Transit Capital	Areawide	0.000	SP1305-bus stop improvements	FY 2024 - Section 5307 - Urbanized Area Formula Grants	NI	\$40,000	\$10,000	\$0	\$50,000	5307	Exempt	
2024	Multi-Modal	216358	Transit Capital	Grand Valley Metropolitan Council (GVMC)	Kent	Interurban Transit Partnership	Transit Capital	Areawide	0.000	SP1203-admin/maintenance facility improvements	FY 2024 - Section 5307 - Urbanized Area Formula Grants	NI	\$16,000	\$4,000	\$0	\$20,000	5307	Exempt	
2024	Multi-Modal	216358	Transit Capital	Grand Valley Metropolitan Council (GVMC)	Kent	Interurban Transit Partnership	Transit Capital	Areawide	0.000	SP1409-administrative vehicle	FY 2024 - Section 5307 - Urbanized Area Formula Grants	NI	\$120,000	\$30,000	\$0	\$150,000	5307	Exempt	
2024	Multi-Modal	216358	Transit Capital	Grand Valley Metropolitan Council (GVMC)	Kent	Interurban Transit Partnership	Transit Capital	Areawide	0.000	SP1803-planning/studies	FY 2024 - Section 5307 - Urbanized Area Formula Grants	NI	\$160,000	\$40,000	\$0	\$200,000	5307	Exempt	
2024	Multi-Modal	216358	Transit Capital	Grand Valley Metropolitan Council (GVMC)	Kent	Interurban Transit Partnership	Transit Capital	Areawide	0.000	SP1301-bus shelter construction	FY 2024 - Section 5307 - Urbanized Area Formula Grants	NI	\$80,000	\$20,000	\$0	\$100,000	5307	Exempt	
2024	Multi-Modal	216358	Transit Capital	Grand Valley Metropolitan Council (GVMC)	Kent	Interurban Transit Partnership	Transit Capital	Areawide	0.000	SP1401-bus equipment (spare, tires, windshields, lifts, bus wraps, bike rack, ADA)	FY 2024 - Section 5307 - Urbanized Area Formula Grants	NI	\$1,920,698	\$480,174	\$0	\$2,400,872	5307	Exempt	

GVMC Project List for 2023 to 2026 TIP for Kent and Ottawa Counties

Fiscal Year	Job Type	Job#	GPA Type	MPO	County	Responsible Agency	Project Name	Limits	Length	Primary Work Type	Project Description	Phase	Fed Estimated Amount	State Estimated	Local Estimated	Calculated Total	Fund Source	Air Quality	Air Quality Comment
2024	Multi-Modal	216358	Transit Capital	Grand Valley Metropolitan Council (GVMC)	Kent	Interurban Transit Partnership	Transit Capital	Areawide	0.000	SP1404-computers (hardware and software)	FY 2024 - Section 5307 - Urbanized Area Formula Grants	NI	\$320,000	\$80,000	\$0	\$400,000	5307	Exempt	
2024	Multi-Modal	216358	Transit Capital	Grand Valley Metropolitan Council (GVMC)	Kent	Interurban Transit Partnership	Transit Capital	Areawide	0.000	SP1104-40 foot and greater replacement bus with or without lift	FY 2024 - Section 5307 - Urbanized Area Formula Grants	NI	\$5,559,564	\$1,389,891	\$0	\$6,949,455	5307	Exempt	
2024	Multi-Modal	216358	Transit Capital	Grand Valley Metropolitan Council (GVMC)	Kent	Interurban Transit Partnership	Transit Capital	Areawide	0.000	SP1406-security equipment - facilities	FY 2024 - Section 5307 - Urbanized Area Formula Grants	NI	\$120,000	\$30,000	\$0	\$150,000	5307	Exempt	
2024	Multi-Modal	216358	Transit Capital	Grand Valley Metropolitan Council (GVMC)	Kent	Interurban Transit Partnership	Transit Capital	Areawide	0.000	SP1102-30-34 foot replacement bus with or without lift	FY 2024 - Section 5307 - Urbanized Area Formula Grants	NI	\$945,321	\$236,330	\$0	\$1,181,651	5307	Exempt	
2024	Multi-Modal	216358	Transit Capital	Grand Valley Metropolitan Council (GVMC)	Kent	Interurban Transit Partnership	Transit Capital	Areawide	0.000	SP1802-capital cost of contracting	FY 2024 - Section 5307 - Urbanized Area Formula Grants	NI	\$560,000	\$140,000	\$0	\$700,000	5307	Exempt	
2024	Multi-Modal	216358	Transit Capital	Grand Valley Metropolitan Council (GVMC)	Kent	Interurban Transit Partnership	Transit Capital	Areawide	0.000	SP1408-maintenance equipment (hoists, tools, etc.)	FY 2024 - Section 5307 - Urbanized Area Formula Grants	NI	\$16,000	\$4,000	\$0	\$20,000	5307	Exempt	
2024	Multi-Modal	216366	Transit Capital	Grand Valley Metropolitan Council (GVMC)	Kent	Interurban Transit Partnership	Transit Capital	Areawide	0.000	SP1104-40 foot and greater replacement bus with or without lift	FY 2024 Section 5339 - 40' + Replacement Buses	NI	\$1,053,602	\$263,401	\$0	\$1,317,003	5339	Exempt	
2024	Multi-Modal	214342	Transit Operating	Grand Valley Metropolitan Council (GVMC)	Kent	Interurban Transit Partnership	Transit Operating	Areawide	0.000	SP1701-rideshare	FY 2024 CMAQ - Rideshare	NI	\$150,000	\$0	\$0	\$150,000	CMG	Exempt	
2024	Multi-Modal	214344	Transit Operating	Grand Valley Metropolitan Council (GVMC)	Kent	Interurban Transit Partnership	Transit Operating	Areawide	0.000	SP1702-ozone action	FY24 CMAQ - Free Rides on Clean Air Action Days	NI	\$40,000	\$10,000	\$0	\$50,000	CRU	Exempt	
2024	Trunkline	205235	S/TIP Line items	Grand Valley Metropolitan Council (GVMC)	Ottawa	MDOT	I-96	I-96 in Ottawa and Kent	34.885	ITS Applications	Rural Freeway Traffic Management systems	CON	\$528,184	\$117,123	\$0	\$645,307	NH	Exempt	
2024	Trunkline	207384	S/TIP Line items	Grand Valley Metropolitan Council (GVMC)	Kent	MDOT	Regionwide	All trunkline routes of GVMC MPO	3.354	Traffic Safety	Longitudinal pavement marking application on trunklines in Grand Region	PE	\$2,205	\$245	\$0	\$2,450	HSIP	Exempt	
2024	Trunkline	207384	S/TIP Line items	Grand Valley Metropolitan Council (GVMC)	Kent	MDOT	Regionwide	All trunkline routes of GVMC MPO	3.354	Traffic Safety	Longitudinal pavement marking application on trunklines in Grand Region	CON	\$683,550	\$75,950	\$0	\$759,500	HSIP	Exempt	
2024	Trunkline	207385	S/TIP Line items	Grand Valley Metropolitan Council (GVMC)	Kent	MDOT	Regionwide	All trunkline routes of GVMC MPO	1.466	Traffic Safety	Special pavement marking application on trunklines in Grand Region	PE	\$2,205	\$245	\$0	\$2,450	HSIP	Exempt	
2024	Trunkline	207385	S/TIP Line items	Grand Valley Metropolitan Council (GVMC)	Kent	MDOT	Regionwide	All trunkline routes of GVMC MPO	1.466	Traffic Safety	Special pavement marking application on trunklines in Grand Region	CON	\$108,045	\$12,005	\$0	\$120,050	HSIP	Exempt	
2024	Trunkline	207399	S/TIP Line items	Grand Valley Metropolitan Council (GVMC)	Kent	MDOT	Regionwide	All trunkline routes of GVMC MPO	1.845	Traffic Safety	Pavement marking retroreflectivity readings on trunklines in Grand Region	CON	\$3,528	\$392	\$0	\$3,920	HSIP	Exempt	
2024	Trunkline	207544	S/TIP Line items	Grand Valley Metropolitan Council (GVMC)	Muskegon	MDOT	M-46	Non-Freeway Signing Upgrade	42.237	Traffic Safety	Non-Freeway Signing Upgrade	PE	\$95,424	\$0	\$0	\$95,424	STG	Exempt	
2024	Trunkline	208927	S/TIP Line items	Grand Valley Metropolitan Council (GVMC)	Kent	MDOT	M-44 CONN	From I-96 north to Airway Street	2.665	Road Rehabilitation	Milling and Two Course Asphalt Resurfacing	ROW	\$32,740	\$6,352	\$908	\$40,000	NH	Exempt	
2024	Trunkline	208927	S/TIP Line items	Grand Valley Metropolitan Council (GVMC)	Kent	MDOT	M-44 CONN	From I-96 north to Airway Street	2.665	Road Rehabilitation	Milling and Two Course Asphalt Resurfacing	CON	\$5,008,402	\$1,093,940	\$16,659	\$6,119,001	NH	Exempt	
2024	Trunkline	210046	S/TIP Line items	Grand Valley Metropolitan Council (GVMC)	Kent	MDOT	M-11	From Division Avenue east to Kalamazoo Avenue	1.848	Road Rehabilitation	Inlay	CON	\$13,914,500	\$2,699,812	\$385,688	\$17,000,000	NH	Exempt	

GVMC Project List for 2023 to 2026 TIP for Kent and Ottawa Counties

Fiscal Year	Job Type	Job#	GPA Type	MPO	County	Responsible Agency	Project Name	Limits	Length	Primary Work Type	Project Description	Phase	Fed Estimated Amount	State Estimated	Local Estimated	Calculated Total	Fund Source	Air Quality	Air Quality Comment
2024	Trunkline	204758	Trunkline Traffic Operations And Safety	Grand Valley Metropolitan Council (GVMC)	Ottawa	MDOT	M-6	Grand Rapids/South Beltline W	0.000	Roadside Facilities - Preserve	Cold milling and one course asphalt overlay.	CON	\$65,481	\$14,521	\$0	\$80,002	ST	Exempt	
2024	Trunkline	205257	Trunkline Traffic Operations And Safety	Grand Valley Metropolitan Council (GVMC)	Kent	MDOT	Regionwide	Various locations in Grand Region	0.000	ITS Applications	2024 WMTOC Control Room Operations	OPS	\$1,442,598	\$319,892	\$0	\$1,762,490	ST	Exempt	
2024	Trunkline	205258	Trunkline Traffic Operations And Safety	Grand Valley Metropolitan Council (GVMC)	Kent	MDOT	Regionwide	Regionwide - Grand	0.000	ITS Applications	2024 ITS Maintenance and Operations in Grand Region	OPS	\$900,350	\$199,650	\$0	\$1,100,000	ST	Exempt	
2024	Trunkline	211738	Trunkline Traffic Operations And Safety	Grand Valley Metropolitan Council (GVMC)	Kent	MDOT	M-57	Ramsdell Drive to Morgan Mills Avenue	5.943	Traffic Safety	Shoulder Paving with Shoulder Rumble Strips	PE	\$278,100	\$30,900	\$0	\$309,000	HSIP	Exempt	
2024	Trunkline	211977	Trunkline Traffic Operations And Safety	Grand Valley Metropolitan Council (GVMC)	Kent	MDOT	M-37	8 Signals on M-37 (Broadmoor)	0.000	Traffic Safety	Modernize signals to current standards	ROW	\$10,000	\$0	\$0	\$10,000	STG	Exempt	
2024	Trunkline	213575	Trunkline Traffic Operations And Safety	Grand Valley Metropolitan Council (GVMC)	Kent	MDOT	Front Ave NW	Kent County	0.000	ITS Applications	2024 Safety Service Patrol Operations - Grand Region	OPS	\$253,735	\$56,265	\$0	\$310,000	NH	Exempt	
2024	Trunkline	214111	Trunkline Traffic Operations And Safety	Grand Valley Metropolitan Council (GVMC)	Kent	MDOT	US-131 S	From Wealthy Street to Pearl Street	0.572	Traffic Safety	High Friction Surface Treatment	PE	\$69,750	\$7,750	\$0	\$77,500	HSIP	Exempt	
2025	Local	215846	Local Road	Grand Valley Metropolitan Council (GVMC)	Kent	East Grand Rapids	Plymouth Rd	Franklin St to Hall St	0.501	Road Rehabilitation	Milling and Two Course Asphalt Resurfacing	CON	\$665,250	\$0	\$221,750	\$887,000	STU	Exempt	
2025	Local	215829	Local Road	Grand Valley Metropolitan Council (GVMC)	Kent	Grand Rapids	Michigan St NE	Maryland Ave to Leffingwel Ave	0.500	Road Rehabilitation	Milling and Two Course Asphalt Resurfacing	CON	\$480,665	\$0	\$1,167,329	\$1,647,994	STU	Exempt	
2025	Local	215831	Local Road	Grand Valley Metropolitan Council (GVMC)	Kent	Grand Rapids	O'Brien Rd SW	Covell Ave to Butterworth Ave	0.522	Road Rehabilitation	Milling and Two Course Asphalt Resurfacing	CON	\$500,000	\$0	\$492,218	\$992,218	STU	Exempt	
2025	Local	216261	Local Road	Grand Valley Metropolitan Council (GVMC)	Kent	Grand Rapids	Cherry St SE	Sheldon Ave to Legrave Ave & Prospect Ave to Madison Ave	0.123	Road Rehabilitation	Milling and Two course Asphalt Resurfacing	CON	\$150,000	\$0	\$90,000	\$240,000	STU	Exempt	
2025	Local	214492	Local Traffic Operations And Safety	Grand Valley Metropolitan Council (GVMC)	Kent	Grand Rapids	Market Ave SW	Areawide	0.055	ITS Applications	FY 2025 Traffic Operation Center Operations	NI	\$544,000	\$0	\$136,000	\$680,000	CM	Exempt	
2025	Local	214493	Local Traffic Operations And Safety	Grand Valley Metropolitan Council (GVMC)	Kent	Grand Rapids	Market Ave SW	Areawide	0.055	Traffic Safety	Signal Optimization (up to 120 locations)	CON	\$300,000	\$0	\$75,000	\$375,000	CRU	Exempt	
2025	Local	215832	S/TIP Line items	Grand Valley Metropolitan Council (GVMC)	Kent	Grand Rapids	Wealthy St SE	Richard Terrace Ave to Ethel Ave	0.105	Reconstruction	Concrete Reconstruction (and Brick)	CON	\$350,000	\$0	\$1,618,327	\$1,968,327	STU	Exempt	
2025	Local	215849	S/TIP Line items	Grand Valley Metropolitan Council (GVMC)	Kent	Grand Rapids	Ann St NW	Monroe Ave to Plainfield Ave	0.562	Reconstruction	Reconstruction	CON	\$1,381,000	\$0	\$675,467	\$2,056,467	ST	Exempt	
2025	Local	216263	S/TIP Line items	Grand Valley Metropolitan Council (GVMC)	Kent	Grand Rapids	Division Ave NE	Fulton St to Michigan St	0.502	Reconstruction	Reconstruction	CON	\$783,000			\$783,000	STU	Exempt	

GVMC Project List for 2023 to 2026 TIP for Kent and Ottawa Counties

Fiscal Year	Job Type	Job#	GPA Type	MPO	County	Responsible Agency	Project Name	Limits	Length	Primary Work Type	Project Description	Phase	Fed Estimated Amount	State Estimated	Local Estimated	Calculated Total	Fund Source	Air Quality	Air Quality Comment
2025	Local	216264	S/TIP Line items	Grand Valley Metropolitan Council (GVMC)	Kent	Grand Rapids	Grandville Ave SW	Stolpe St to Hall St	0.221	Reconstruction	Reconstruction	CON	\$538,735	\$0	\$1,296,920	\$1,835,655	STU	Exempt	
2025	Local			Grand Valley Metropolitan Council (GVMC)	Kent	Grand Rapids	Fulton St	Plymouth Ave to Worcester Dr	0.5	Roadside Facilities - Improve	Sharrows/Sidewalks	CON	\$473,895		\$203,098	\$676,993	TAU	Exempt	
2025	Local			Grand Valley Metropolitan Council (GVMC)	Kent	Grand Rapids	Fuller Ave/Lyon St	Lyon St NE to Lyon St NE through Fuller Park		Roadside Facilities - Improve	Construction of pedestrian hybrid beacon; ramp widening/upgrades; trail widening	CON	\$175,000		\$75,000	\$250,000	TAU	Exempt	
2025	Local			Grand Valley Metropolitan Council (GVMC)	Kent	Grand Rapids	Breton Rd/Elliott St SE	Breton Rd/Elliott St SE		Roadside Facilities - Improve	Construction of PHB, related curb/gutter and ADA work	CON	\$175,000		\$75,000	\$250,000	TAU	Exempt	
2025	Local	214494	S/TIP Line items	Grand Valley Metropolitan Council (GVMC)	Kent	Grand Valley Metropolitan Council	Areawide	GVMC Planning Area	0.000	Planning, Research & Design	FY2025 Clean Air Action Program	NI	\$80,000	\$0	\$20,000	\$100,000	CM	Exempt	
2025	Local	215844	S/TIP Line items	Grand Valley Metropolitan Council (GVMC)	Kent	Grand Valley Metropolitan Council	Areawide	GVMC Planning Area	0.000	Planning, Research & Design	Planning Studies	NI	\$150,000	\$0	\$37,500	\$187,500	STU	Exempt	
2025	Local	215833	Local Road	Grand Valley Metropolitan Council (GVMC)	Kent	Grandville	Kenowa Ave SW	36th St to 44th St	1.005	Road Rehabilitation	Milling and Two Course Asphalt Resurfacing	CON	\$536,250	\$0	\$178,750	\$715,000	STU	Exempt	
2025	Local	215834	S/TIP Line items	Grand Valley Metropolitan Council (GVMC)	Ottawa	Hudsonville	Highland Dr	32nd Ave to Creek View Dr	0.628	Reconstruction	Reconstruction	CON	\$519,000	\$0	\$291,000	\$810,000	STU	Exempt	
2025	Local	209987	Local Livability and Sustainability	Grand Valley Metropolitan Council (GVMC)	Kent	Kent County	Argo Avenue Southeast	Argo Drive from Hall Street to Cascade Road	0.333	Roadside Facilities - Improve	Sharrows/Sidewalks	CON	\$125,790	\$0	\$53,910	\$179,700	TAU	Exempt	
2025	Local	215851	Local Road	Grand Valley Metropolitan Council (GVMC)	Kent	Kent County	Patterson Ave SE	M-37 to Burton St	4.077	Road Rehabilitation	Milling and Two Course Asphalt Resurfacing	CON	\$738,000	\$0	\$184,500	\$922,500	ST	Exempt	
2025	Local	215852	Local Road	Grand Valley Metropolitan Council (GVMC)	Kent	Kent County	Northland Dr NE	M-57 to Indian Lakes Rd	1.306	Road Rehabilitation	Milling and Two Course Asphalt Resurfacing	CON	\$0	\$880,000	\$220,000	\$1,100,000	EDC	Exempt	
2025	Local	215853	Local Road	Grand Valley Metropolitan Council (GVMC)	Kent	Kent County	Forest Hill Ave SE	Hall St to Cascade Rd	0.349	Road Rehabilitation	Milling and Two Course Asphalt Resurfacing	CON	\$0	\$480,000	\$120,000	\$600,000	EDC	Exempt	
2025	Local	215841	S/TIP Line items	Grand Valley Metropolitan Council (GVMC)	Kent	Kent County	84th St SE	Patterson Ave to Kraft Ave	0.959	Reconstruction	Reconstruction	CON	\$1,125,000	\$0	\$375,000	\$1,500,000	STU	Exempt	
2025	Local	215855	S/TIP Line items	Grand Valley Metropolitan Council (GVMC)	Kent	Kent County	Lincoln Lake Ave NE	Belding Rd to Strotheide St	0.760	Reconstruction	Reconstruction	CON	\$1,031,000	\$0	\$369,000	\$1,400,000	STL	Exempt	
2025	Local	215977	S/TIP Line items	Grand Valley Metropolitan Council (GVMC)	Kent	Kent County	W River Dr NE	Lamoreaux Drive to Pine Island Drive	1.417	Road Rehabilitation	Resurface	CON	\$373,000			\$373,000	ST	Exempt	
2025	Local			Grand Valley Metropolitan Council (GVMC)	Kent	Kent County	4 Mile Rd	Hachmuth to Yorkland	0.4	Roadside Facilities - Improve	Nonmotorized Trail	CON	\$119,000		\$51,000	\$170,000	TAU	Exempt	
2025	Local			Grand Valley Metropolitan Council (GVMC)	Kent	Kent County	68th St	Kraft Ave to 0.4 Miles east	0.4	New Facilities	Sidewalk	CON	\$140,000		\$60,000	\$200,000	TAU	Exempt	
2025	Local	215835	Local Road	Grand Valley Metropolitan Council (GVMC)	Kent	Kentwood	52nd Street	Division Ave to Eastern Ave	1.137	Road Rehabilitation	Milling and Two Course Asphalt Resurfacing	CON	\$525,000	\$0	\$175,000	\$700,000	STU	Exempt	
2025	Local	215836	Local Road	Grand Valley Metropolitan Council (GVMC)	Kent	Kentwood	52nd St SE	East Paris Ave to M-37	0.629	Road Rehabilitation	Milling and Two Course Asphalt Resurfacing	CON	\$787,500	\$0	\$262,500	\$1,050,000	STU	Exempt	
2025	Local	215847	Local Road	Grand Valley Metropolitan Council (GVMC)	Kent	Kentwood	52nd St SE	Bailey's Grove to East Paris Ave	0.417	Road Rehabilitation	Milling and Two Course Asphalt Resurfacing	CON	\$378,000	\$0	\$126,000	\$504,000	STU	Exempt	
2025	Local	214547	S/TIP Line items	Grand Valley Metropolitan Council (GVMC)	Kent	Lowell	Grand River Dr SE	South Hudson Street at the Lowell Fair to Montcalm Street, City of Lowell	1.941	New Facilities	Nonmotorized path construction	CON	\$2,197,851	\$0	\$1,260,149	\$3,458,000	TA	Exempt	
2025	Local	215842	Local Road	Grand Valley Metropolitan Council (GVMC)	Ottawa	Ottawa County	Linden Dr/Luce St	Lake Michigan Dr (M-45) to Kenowa Ave	5.397	Road Rehabilitation	Milling and Two Course Asphalt Resurface + 3' Paved Shoulders	CON	\$1,496,600	\$0	\$653,400	\$2,150,000	STU	Exempt	

GVMC Project List for 2023 to 2026 TIP for Kent and Ottawa Counties

Fiscal Year	Job Type	Job#	GPA Type	MPO	County	Responsible Agency	Project Name	Limits	Length	Primary Work Type	Project Description	Phase	Fed Estimated Amount	State Estimated	Local Estimated	Calculated Total	Fund Source	Air Quality	Air Quality Comment
2025	Local	215837	Local Road	Grand Valley Metropolitan Council (GVMC)	Kent	Wyoming	Burlingame Ave SW	44th St to 52nd St	1.017	Road Rehabilitation	Milling and Two Course Asphalt Resurfacing (5")	CON	\$750,000	\$0	\$250,000	\$1,000,000	STU	Exempt	
2025	Local	215838	Local Road	Grand Valley Metropolitan Council (GVMC)	Kent	Wyoming	Burlingame Ave SW	36th St to 44th St	1.001	Road Rehabilitation	Milling and Two Course Asphalt Resurfacing (5")	CON	\$750,000	\$0	\$250,000	\$1,000,000	STU	Exempt	
2025	Local	214527	Local Traffic Operations And Safety	Grand Valley Metropolitan Council (GVMC)	Kent	Wyoming	Byron Center Ave SW	Byron Center at 56th Street	0.192	Minor Widening	Dual left turn NB to WB	CON	\$400,000	\$0	\$100,000	\$500,000	CM	Exempt	
2025	Multi-Modal	214479	Transit Capital	Grand Valley Metropolitan Council (GVMC)	Kent	Interurban Transit Partnership	Transit Capital	Areawide	0.000	SP1104-40 foot and greater replacement bus with or without lift	FY 2025 Bus Replacement	NI	\$143,578	\$35,895	\$0	\$179,473	CM	Exempt	
2025	Multi-Modal	214481	Transit Capital	Grand Valley Metropolitan Council (GVMC)	Kent	Interurban Transit Partnership	Transit Capital	Areawide	0.000	SP1105-van replacement, any size with or without lift	FY2025 Replacement Vanpool Van	NI	\$100,000	\$25,000	\$0	\$125,000	CM	Exempt	
2025	Multi-Modal	216364	Transit Capital	Grand Valley Metropolitan Council (GVMC)	Kent	Interurban Transit Partnership	Transit Capital	Areawide	0.000	SP1402-fare collection	FY 2025: Section 5307	NI	\$192,000	\$48,000	\$0	\$240,000	5307	Exempt	
2025	Multi-Modal	216364	Transit Capital	Grand Valley Metropolitan Council (GVMC)	Kent	Interurban Transit Partnership	Transit Capital	Areawide	0.000	SP1305-bus stop improvements	FY 2025: Section 5307	NI	\$200,000	\$50,000	\$0	\$250,000	5307	Exempt	
2025	Multi-Modal	216364	Transit Capital	Grand Valley Metropolitan Council (GVMC)	Kent	Interurban Transit Partnership	Transit Capital	Areawide	0.000	SP1203-admin/maintenance facility improvements	FY 2025: Section 5307	NI	\$16,000	\$4,000	\$0	\$20,000	5307	Exempt	
2025	Multi-Modal	216364	Transit Capital	Grand Valley Metropolitan Council (GVMC)	Kent	Interurban Transit Partnership	Transit Capital	Areawide	0.000	SP1409-administrative vehicle	FY 2025: Section 5307	NI	\$76,000	\$19,000	\$0	\$95,000	5307	Exempt	
2025	Multi-Modal	216364	Transit Capital	Grand Valley Metropolitan Council (GVMC)	Kent	Interurban Transit Partnership	Transit Capital	Areawide	0.000	SP1401-bus equipment (spare, tires, windshields, lifts, bus wraps, bike rack, ADA)	FY 2025: Section 5307	NI	\$1,509,350	\$377,338	\$0	\$1,886,688	5307	Exempt	
2025	Multi-Modal	216364	Transit Capital	Grand Valley Metropolitan Council (GVMC)	Kent	Interurban Transit Partnership	Transit Capital	Areawide	0.000	SP1102-30-34 foot replacement bus with or without lift	FY 2025: Section 5307	NI	\$642,823	\$160,706	\$0	\$803,529	5307	Exempt	
2025	Multi-Modal	216364	Transit Capital	Grand Valley Metropolitan Council (GVMC)	Kent	Interurban Transit Partnership	Transit Capital	Areawide	0.000	SP1404-computers (hardware and software)	FY 2025: Section 5307	NI	\$320,000	\$80,000	\$0	\$400,000	5307	Exempt	
2025	Multi-Modal	216364	Transit Capital	Grand Valley Metropolitan Council (GVMC)	Kent	Interurban Transit Partnership	Transit Capital	Areawide	0.000	SP1803-planning/studies	FY 2025: Section 5307	NI	\$160,000	\$40,000	\$0	\$200,000	5307	Exempt	
2025	Multi-Modal	216364	Transit Capital	Grand Valley Metropolitan Council (GVMC)	Kent	Interurban Transit Partnership	Transit Capital	Areawide	0.000	SP1204-bus terminal facility construction	FY 2025: Section 5307	NI	\$2,000,000	\$500,000	\$0	\$2,500,000	5307	Exempt	
2025	Multi-Modal	216364	Transit Capital	Grand Valley Metropolitan Council (GVMC)	Kent	Interurban Transit Partnership	Transit Capital	Areawide	0.000	SP1406-security equipment - facilities	FY 2025: Section 5307	NI	\$120,000	\$30,000	\$0	\$150,000	5307	Exempt	
2025	Multi-Modal	216364	Transit Capital	Grand Valley Metropolitan Council (GVMC)	Kent	Interurban Transit Partnership	Transit Capital	Areawide	0.000	SP1802-capital cost of contracting	FY 2025: Section 5307	NI	\$560,000	\$140,000	\$0	\$700,000	5307	Exempt	
2025	Multi-Modal	216364	Transit Capital	Grand Valley Metropolitan Council (GVMC)	Kent	Interurban Transit Partnership	Transit Capital	Areawide	0.000	SP1408-maintenance equipment (hoists, tools, etc.)	FY 2025: Section 5307	NI	\$16,000	\$4,000	\$0	\$20,000	5307	Exempt	
2025	Multi-Modal	216364	Transit Capital	Grand Valley Metropolitan Council (GVMC)	Kent	Interurban Transit Partnership	Transit Capital	Areawide	0.000	SP1104-40 foot and greater replacement bus with or without lift	FY 2025: Section 5307	NI	\$4,237,409	\$1,059,352	\$0	\$5,296,761	5307	Exempt	
2025	Multi-Modal	216367	Transit Capital	Grand Valley Metropolitan Council (GVMC)	Kent	Interurban Transit Partnership	Transit Capital	Areawide	0.000	SP1104-40 foot and greater replacement bus with or without lift	FY 2025: Section 5339	NI	\$1,053,602	\$263,401	\$0	\$1,317,003	5339	Exempt	
2025	Multi-Modal	216371	Transit Capital	Grand Valley Metropolitan Council (GVMC)	Kent	Interurban Transit Partnership	Transit Capital	Areawide	0.000	SP1104-40 foot and greater replacement bus with or without lift	FY 2025: CRP	NI	\$396,808	\$99,202	\$0	\$496,010	CRU	Exempt	
2025	Multi-Modal	214482	Transit Operating	Grand Valley Metropolitan Council (GVMC)	Kent	Interurban Transit Partnership	Transit Operating	Areawide	0.000	SP1701-rideshare	FY2025 Rideshare	NI	\$150,000	\$0	\$0	\$150,000	CMG	Exempt	
2025	Multi-Modal	214483	Transit Operating	Grand Valley Metropolitan Council (GVMC)	Kent	Interurban Transit Partnership	Transit Operating	Areawide	0.000	SP1702-ozone action	FY2025 Free Rides on Clean Air Action Days	NI	\$40,000	\$10,000	\$0	\$50,000	CM	Exempt	

GVMC Project List for 2023 to 2026 TIP for Kent and Ottawa Counties

Fiscal Year	Job Type	Job#	GPA Type	MPO	County	Responsible Agency	Project Name	Limits	Length	Primary Work Type	Project Description	Phase	Fed Estimated Amount	State Estimated	Local Estimated	Calculated Total	Fund Source	Air Quality	Air Quality Comment
2025	Trunkline	207554	S/TIP Line items	Grand Valley Metropolitan Council (GVMC)	Kent	MDOT	M-46	Non-Freeway Signing Upgrade	33.876	Traffic Safety	Non-Freeway Signing Upgrade	PE	\$87,706	\$0	\$0	\$87,706	STG	Exempt	
2025	Trunkline	208525	S/TIP Line items	Grand Valley Metropolitan Council (GVMC)	Kent	MDOT	I-296/US-131 NB	From Bridge Street north to Richmond Street	1.343	Road Rehabilitation	Concrete Inlay	CON	\$16,281,900	\$1,809,100	\$0	\$18,091,000	IM	Exempt	
2025	Trunkline	208902	S/TIP Line items	Grand Valley Metropolitan Council (GVMC)	Kent	MDOT	I-296/US-131 NB	7 Bridges along US-131/I-296 NB Corridor	0.000	Bridge Rehabilitation	Deep overlay, Epoxy overlay, Railing Replacement	CON	\$5,201,570	\$1,153,435	\$0	\$6,355,005	NH	Exempt	
2025	Trunkline	209616	S/TIP Line items	Grand Valley Metropolitan Council (GVMC)	Kent	MDOT	Regionwide	All trunkline routes of GVMC MPO	3.908	Traffic Safety	Longitudinal pavement marking application on trunklines in Grand Region	PE	\$2,205	\$245	\$0	\$2,450	HSIP	Exempt	
2025	Trunkline	209616	S/TIP Line items	Grand Valley Metropolitan Council (GVMC)	Kent	MDOT	Regionwide	All trunkline routes of GVMC MPO	3.908	Traffic Safety	Longitudinal pavement marking application on trunklines in Grand Region	CON	\$650,475	\$72,275	\$0	\$722,750	HSIP	Exempt	
2025	Trunkline	209617	S/TIP Line items	Grand Valley Metropolitan Council (GVMC)	Kent	MDOT	Regionwide	All trunkline routes of GVMC MPO	1.983	Traffic Safety	Special pavement marking application on trunklines in Grand Region	PE	\$2,205	\$245	\$0	\$2,450	HSIP	Exempt	
2025	Trunkline	209617	S/TIP Line items	Grand Valley Metropolitan Council (GVMC)	Kent	MDOT	Regionwide	All trunkline routes of GVMC MPO	1.983	Traffic Safety	Special pavement marking application on trunklines in Grand Region	CON	\$102,533	\$11,393	\$0	\$113,926	HSIP	Exempt	
2025	Trunkline	209631	S/TIP Line items	Grand Valley Metropolitan Council (GVMC)	Kent	MDOT	Regionwide	All trunkline routes of GVMC MOP	2.868	Traffic Safety	Pavement marking retroreflectivity readings on trunklines in Grand Region	CON	\$3,528	\$392	\$0	\$3,920	HSIP	Exempt	
2025	Trunkline	210053	S/TIP Line items	Grand Valley Metropolitan Council (GVMC)	Kent	MDOT	M-21	From I-96 east to Grand River Avenue	3.698	Road Rehabilitation	Milling and Two Course Asphalt Resurfacing	CON	\$7,284,650	\$1,615,350	\$0	\$8,900,000	NH	Exempt	
2025	Trunkline	210057	S/TIP Line items	Grand Valley Metropolitan Council (GVMC)	Kent	MDOT	M-37	From 60th Street north to 44th Street	2.075	Road Rehabilitation	Inlay	CON	\$9,003,500	\$1,779,754	\$216,746	\$11,000,000	NH	Exempt	
2025	Trunkline	213211	S/TIP Line items	Grand Valley Metropolitan Council (GVMC)	Kent	MDOT	I-96	M-37/M-44 (East Beltline) over I-96 from GRE Railroad to Bradford Street	0.335	Bridge Replacement	Bridge Replacement of S10-41025 & Road Reconstruction of bridge approaches	CON	\$15,727,478	\$3,330,140	\$157,383	\$19,215,001	NH	Exempt	
2025	Trunkline	214094	S/TIP Line items	Grand Valley Metropolitan Council (GVMC)	Kent	MDOT	US-131	From Wealthy Street north to Pearl Street	0.911	Operation Improvements	Remove and Replace Existing Freeway Lighting	CON	\$4,935,555	\$1,094,445	\$0	\$6,030,000	NH	Exempt	
2025	Trunkline	214959	S/TIP Line items	Grand Valley Metropolitan Council (GVMC)	Kent	MDOT	US-131	Franklin Street over US-131	0.000	Bridge Replacement	Partial Deck Replacement	CON	\$7,333,761	\$1,626,241	\$0	\$8,960,002	BFP	Exempt	
2025	Trunkline	208925	Trunkline Bridge	Grand Valley Metropolitan Council (GVMC)	Kent	MDOT	I-96	3 Mile Road Over I-96 (41025-S06)	0.000	Bridge Rehabilitation	Deep Overlay	CON	\$1,406,700	\$156,300	\$0	\$1,563,000	IM	Exempt	
2025	Trunkline	212929	Trunkline Bridge	Grand Valley Metropolitan Council (GVMC)	Kent	MDOT	US-131 NB	US-131 NB over Grandville Ave	0.000	Bridge CPM	Epoxy Overlay	CON	\$2,299,033	\$509,803	\$0	\$2,808,836	NH	Exempt	
2025	Trunkline	208992	Trunkline Traffic Operations And Safety	Grand Valley Metropolitan Council (GVMC)	Kent	MDOT	Regionwide	Various locations in Grand Region	0.000	ITS Applications	2025 West Michigan TOC Operations	OPS	\$1,454,118	\$322,446	\$0	\$1,776,564	ST	Exempt	

GVMC Project List for 2023 to 2026 TIP for Kent and Ottawa Counties

Fiscal Year	Job Type	Job#	GPA Type	MPO	County	Responsible Agency	Project Name	Limits	Length	Primary Work Type	Project Description	Phase	Fed Estimated Amount	State Estimated	Local Estimated	Calculated Total	Fund Source	Air Quality	Air Quality Comment
2025	Trunkline	208993	Trunkline Traffic Operations And Safety	Grand Valley Metropolitan Council (GVMC)	Kent	MDOT	Regionwide	Regionwide - Grand	0.000	ITS Applications	2025 ITS Maintenance and Operations in Grand Region	OPS	\$941,275	\$208,725	\$0	\$1,150,000	ST	Exempt	
2025	Trunkline	209412	Trunkline Traffic Operations And Safety	Grand Valley Metropolitan Council (GVMC)	Kent	MDOT	M-57	Northland Dr to Farland Ave	3.917	Traffic Safety	Shoulder Paving with Shoulder Rumble Strips	CON	\$1,539,000	\$171,000	\$0	\$1,710,000	HSIP	Exempt	
2025	Trunkline	211977	Trunkline Traffic Operations And Safety	Grand Valley Metropolitan Council (GVMC)	Kent	MDOT	M-37	8 Signals on M-37 (Broadmoor)	0.000	Traffic Safety	Modernize signals to current standards	CON	\$2,670,593	\$0	\$0	\$2,670,593	STG	Exempt	
2026	Local	215816	Local Road	Grand Valley Metropolitan Council (GVMC)	Kent	Grand Rapids	3 Mile Rd NE	Monroe Ave to Plainfield Ave	0.899	Road Capital Preventive Maintenance	Milling and 1.5" Asphalt Overlay	CON	\$501,165	\$0	\$1,267,654	\$1,768,819	STU	Exempt	
2026	Local	215848	Local Road	Grand Valley Metropolitan Council (GVMC)	Kent	Grand Rapids	Valley Ave NW	Bridge St to 4th St	0.384	Road Capital Preventive Maintenance	Milling and 1.5" Asphalt Overlay	CON	\$665,091	\$0	\$1,523,773	\$2,188,864	STU	Exempt	
2026	Local	214504	Local Traffic Operations And Safety	Grand Valley Metropolitan Council (GVMC)	Kent	Grand Rapids	Market Ave SW	Areawide	0.080	ITS Applications	FY2026 Regional Signal System TMS Operations	OPS	\$552,000	\$0	\$138,000	\$690,000	CM	Exempt	
2026	Local	214512	Local Traffic Operations And Safety	Grand Valley Metropolitan Council (GVMC)	Kent	Grand Rapids	Market Ave SW	Up to 120 intersections on federal aid roads	0.055	Traffic Safety	FY2026 Signal Optimization	CON	\$240,000	\$0	\$60,000	\$300,000	CM	Exempt	
2026	Local	215839	S/TIP Line items	Grand Valley Metropolitan Council (GVMC)	Kent	Grand Rapids	Buchanan Ave SW	Corrine St to Hall St	0.530	Reconstruction	Reconstruction	CON	\$1,239,913	\$0	\$1,983,965	\$3,223,878	STU	Exempt	
2026	Local	215843	S/TIP Line items	Grand Valley Metropolitan Council (GVMC)	Kent	Grand Rapids	Grandville Ave SW	Hall St to Beacon St	0.275	Reconstruction	Reconstruction	CON	\$600,000	\$0	\$1,853,263	\$2,453,263	STU	Exempt	
2026	Local	215845	S/TIP Line items	Grand Valley Metropolitan Council (GVMC)	Kent	Grand Rapids	Jefferson Ave SE	Franklin St to Logan St	0.390	Reconstruction	Reconstruction	CON	\$1,082,030	\$0	\$1,231,354	\$2,313,384	STU	Exempt	
2026	Local	215854	S/TIP Line items	Grand Valley Metropolitan Council (GVMC)	Kent	Grand Rapids	Wealthy St SE	Benjamin Ave to Richard Terrace Ave	0.103	Reconstruction	Reconstruction	CON	\$400,000	\$0	\$1,300,000	\$1,700,000	STU	Exempt	
2026	Local	214513	S/TIP Line items	Grand Valley Metropolitan Council (GVMC)	Kent	Grand Valley Metropolitan Council	Areawide	GVMC Planning Area	0.000	Planning, Research & Design	FY2026 Clean Air Action Program	NI	\$80,000	\$0	\$20,000	\$100,000	CM	Exempt	
2026	Local	216031	S/TIP Line items	Grand Valley Metropolitan Council (GVMC)	Kent	Grand Valley Metropolitan Council	Areawide	GVMC Planning Area	0.000	Planning, Research & Design	Planning Studies	NI	\$150,000	\$0	\$37,500	\$187,500	STU	Exempt	
2026	Local	215856	Local Road	Grand Valley Metropolitan Council (GVMC)	Kent	Grandville	Century Center St SW	Ivanrest Ave to Mall Dr	0.408	Road Rehabilitation	Mill & Resurface	CON	\$320,000	\$0	\$80,000	\$400,000	STU	Exempt	
2026	Local	215858	Local Road	Grand Valley Metropolitan Council (GVMC)	Ottawa	Hudsonville	40th Ave	M-121 to Grant St	0.405	Road Rehabilitation	Mill & Resurface	CON	\$256,800	\$0	\$122,200	\$379,000	STU	Exempt	
2026	Local	216044	Local Road	Grand Valley Metropolitan Council (GVMC)	Kent	Kent County	S Division Ave	76th St to 68th St	0.994	Road Rehabilitation	Resurfacing	CON	\$752,000	\$0	\$248,000	\$1,000,000	ST	Exempt	
2026	Local	216057	Local Road	Grand Valley Metropolitan Council (GVMC)	Kent	Kent County	Forest Hill Ave SE	Ada Dr to Fulton St	1.054	Road Rehabilitation	Resurfacing	CON	\$0	\$720,000	\$180,000	\$900,000	EDC	Exempt	
2026	Local	216061	Local Road	Grand Valley Metropolitan Council (GVMC)	Kent	Kent County	10 Mile Rd NE	East of Belmont Bypass to Childsdale Ave	1.477	Road Rehabilitation	Resurfacing	CON	\$0	\$960,000	\$240,000	\$1,200,000	EDC	Exempt	
2026	Local	216025	S/TIP Line items	Grand Valley Metropolitan Council (GVMC)	Kent	Kent County	Myers Lake Ave NE	12 Mile Rd to 14 Mile Rd	2.004	Reconstruction	Reconstruction	CON	\$1,360,000	\$0	\$340,000	\$1,700,000	STU	Exempt	

GVMC Project List for 2023 to 2026 TIP for Kent and Ottawa Counties

Fiscal Year	Job Type	Job#	GPA Type	MPO	County	Responsible Agency	Project Name	Limits	Length	Primary Work Type	Project Description	Phase	Fed Estimated Amount	State Estimated	Local Estimated	Calculated Total	Fund Source	Air Quality	Air Quality Comment
2026	Local	216025	S/TIP Line items	Grand Valley Metropolitan Council (GVMC)	Kent	Kent County	Myers Lake Ave NE	12 Mile Rd to 14 Mile Rd	2.004	Reconstruction	Reconstruction	CON	\$1,408,000	\$0	\$312,219	\$1,720,219	ST	Exempt	
2026	Local	216126	S/TIP Line items	Grand Valley Metropolitan Council (GVMC)	Kent	Kent County	Lincoln Lake Ave NE	Strotheide St to Heffron St	1.002	Reconstruction	Reconstruction	CON	\$1,052,000	\$0	\$448,000	\$1,500,000	STL	Exempt	
2026	Local	215859	Local Road	Grand Valley Metropolitan Council (GVMC)	Kent	Kentwood	36th St SE	Shaffer Ave to M-37	0.530	Road Rehabilitation	Mill & Fill	CON	\$400,000	\$0	\$100,000	\$500,000	STU	Exempt	
2026	Local	214495	S/TIP Line items	Grand Valley Metropolitan Council (GVMC)	Kent	Kentwood	36th St SE	36th at Shaffer	1.059	Traffic Safety	Roundabout construction	CON	\$1,120,000	\$0	\$280,000	\$1,400,000	CRU	Exempt	
2026	Local	216028	Local Road	Grand Valley Metropolitan Council (GVMC)	Ottawa	Ottawa County	Baldwin St	20th Ave to Cottonwood Dr	2.031	Road Rehabilitation	Mill & Resurface	CON	\$680,000	\$0	\$170,000	\$850,000	STU	Exempt	
2026	Local	216041	Local Road	Grand Valley Metropolitan Council (GVMC)	Ottawa	Ottawa County	28th Ave	City Limits to Bauer Rd	2.533	Road Rehabilitation	Mill & Resurface	CON	\$720,000	\$0	\$180,000	\$900,000	STU	Exempt	
2026	Local	216309	Local Road	Grand Valley Metropolitan Council (GVMC)	Ottawa	Ottawa County	12th Ave	Port Sheldon St to Chicago Dr	0.477	Road Rehabilitation	Mill & Resurface	CON	\$185,400	\$0	\$41,112	\$226,512	ST	Exempt	
2026	Local	216313	Local Road	Grand Valley Metropolitan Council (GVMC)	Ottawa	Ottawa County	18th Ave	Port Sheldon St to Chicago Dr	0.330	Road Rehabilitation	Mill & Resurface	CON	\$196,600	\$0	\$43,595	\$240,195	ST	Exempt	
2026	Local	216035	Local Road	Grand Valley Metropolitan Council (GVMC)	Kent	Walker	Alpine Ave NW	3 Mile Rd to Hillside Dr	0.497	Road Rehabilitation	Mill & Resurface	CON	\$800,000	\$0	\$200,000	\$1,000,000	STU	Exempt	
2026	Local			Grand Valley Metropolitan Council (GVMC)	Kent	Walker	Bristol Ave	Three Mile Rd to South City Limits	0.800	Roadside Facilities - Improve	Provide sidewalk to connect neighborhoods with regional trail and West Catholic H.S.	CON	\$700,000		\$300,000	\$1,000,000	TAU	Exempt	
2026	Local	215863	Local Road	Grand Valley Metropolitan Council (GVMC)	Kent	Wyoming	Prairie St SW	West City Limit to Byron Center Ave	0.494	Road Rehabilitation	Mill & Resurface	CON	\$360,000	\$0	\$90,000	\$450,000	STU	Exempt	
2026	Local	215864	Local Road	Grand Valley Metropolitan Council (GVMC)	Kent	Wyoming	Prairie Pkwy SW	Byron Center Ave to Burlingame Ave	1.043	Road Rehabilitation	Mill & Resurface	CON	\$800,000	\$0	\$200,000	\$1,000,000	STU	Exempt	
2026	Local	215866	Local Road	Grand Valley Metropolitan Council (GVMC)	Kent	Wyoming	Prairie Pkwy SW	Burlingame Ave to Michael Ave	0.498	Road Rehabilitation	Mill & Resurface	CON	\$360,000	\$0	\$90,000	\$450,000	STU	Exempt	
2026	Multi-Modal	214496	Transit Capital	Grand Valley Metropolitan Council (GVMC)	Kent	Interurban Transit Partnership	Transit Capital	Areawide	0.000	SP1104-40 foot and greater replacement bus with or without lift	FY 2026 Bus Replacement	NI	\$321,667	\$80,417	\$0	\$402,084	CM	Exempt	
2026	Multi-Modal	214497	Transit Capital	Grand Valley Metropolitan Council (GVMC)	Kent	Interurban Transit Partnership	Transit Capital	Areawide	0.000	SP1105-van replacement, any size with or without lift	FY2026 Vanpool Van Replacement	NI	\$100,000	\$25,000	\$0	\$125,000	CM	Exempt	
2026	Multi-Modal	216365	Transit Capital	Grand Valley Metropolitan Council (GVMC)	Kent	Interurban Transit Partnership	Transit Capital	Areawide	0.000	SP1305-bus stop improvements	FY 2026: Section 5307	NI	\$400,000	\$100,000	\$0	\$500,000	5307	Exempt	
2026	Multi-Modal	216365	Transit Capital	Grand Valley Metropolitan Council (GVMC)	Kent	Interurban Transit Partnership	Transit Capital	Areawide	0.000	SP1203-admin/maintenance facility improvements	FY 2026: Section 5307	NI	\$16,000	\$4,000	\$0	\$20,000	5307	Exempt	
2026	Multi-Modal	216365	Transit Capital	Grand Valley Metropolitan Council (GVMC)	Kent	Interurban Transit Partnership	Transit Capital	Areawide	0.000	SP1801-preventative maintenance	FY 2026: Section 5307	NI	\$1,040,000	\$260,000	\$0	\$1,300,000	5307	Exempt	
2026	Multi-Modal	216365	Transit Capital	Grand Valley Metropolitan Council (GVMC)	Kent	Interurban Transit Partnership	Transit Capital	Areawide	0.000	SP1802-capital cost of contracting	FY 2026: Section 5307	NI	\$560,000	\$140,000	\$0	\$700,000	5307	Exempt	
2026	Multi-Modal	216365	Transit Capital	Grand Valley Metropolitan Council (GVMC)	Kent	Interurban Transit Partnership	Transit Capital	Areawide	0.000	SP1402-fare collection	FY 2026: Section 5307	NI	\$537,600	\$134,400	\$0	\$672,000	5307	Exempt	
2026	Multi-Modal	216365	Transit Capital	Grand Valley Metropolitan Council (GVMC)	Kent	Interurban Transit Partnership	Transit Capital	Areawide	0.000	SP1404-computers (hardware and software)	FY 2026: Section 5307	NI	\$400,000	\$100,000	\$0	\$500,000	5307	Exempt	
2026	Multi-Modal	216365	Transit Capital	Grand Valley Metropolitan Council (GVMC)	Kent	Interurban Transit Partnership	Transit Capital	Areawide	0.000	SP1803-planning/studies	FY 2026: Section 5307	NI	\$160,000	\$40,000	\$0	\$200,000	5307	Exempt	

GVMC Project List for 2023 to 2026 TIP for Kent and Ottawa Counties

Fiscal Year	Job Type	Job#	GPA Type	MPO	County	Responsible Agency	Project Name	Limits	Length	Primary Work Type	Project Description	Phase	Fed Estimated Amount	State Estimated	Local Estimated	Calculated Total	Fund Source	Air Quality	Air Quality Comment
2026	Multi-Modal	216365	Transit Capital	Grand Valley Metropolitan Council (GVMC)	Kent	Interurban Transit Partnership	Transit Capital	Areawide	0.000	SP1102-30-34 foot replacement bus with or without lift	FY 2026: Section 5307	NI	\$491,760	\$122,940	\$0	\$614,700	5307	Exempt	
2026	Multi-Modal	216365	Transit Capital	Grand Valley Metropolitan Council (GVMC)	Kent	Interurban Transit Partnership	Transit Capital	Areawide	0.000	SP1409-administrative vehicle	FY 2026: Section 5307	NI	\$76,000	\$19,000	\$0	\$95,000	5307	Exempt	
2026	Multi-Modal	216365	Transit Capital	Grand Valley Metropolitan Council (GVMC)	Kent	Interurban Transit Partnership	Transit Capital	Areawide	0.000	SP1406-security equipment - facilities	FY 2026: Section 5307	NI	\$98,400	\$24,600	\$0	\$123,000	5307	Exempt	
2026	Multi-Modal	216365	Transit Capital	Grand Valley Metropolitan Council (GVMC)	Kent	Interurban Transit Partnership	Transit Capital	Areawide	0.000	SP1408-maintenance equipment (hoists, tools, etc.)	FY 2026: Section 5307	NI	\$16,000	\$4,000	\$0	\$20,000	5307	Exempt	
2026	Multi-Modal	216365	Transit Capital	Grand Valley Metropolitan Council (GVMC)	Kent	Interurban Transit Partnership	Transit Capital	Areawide	0.000	SP1104-40 foot and greater replacement bus with or without lift	FY 2026: Section 5307	NI	\$4,135,169	\$1,033,792	\$0	\$5,168,961	5307	Exempt	
2026	Multi-Modal	216365	Transit Capital	Grand Valley Metropolitan Council (GVMC)	Kent	Interurban Transit Partnership	Transit Capital	Areawide	0.000	SP1401-bus equipment (spare, tires, windshields, lifts, bus wraps, bike rack, ADA)	FY 2026: Section 5307	NI	\$2,118,654	\$529,663	\$0	\$2,648,317	5307	Exempt	
2026	Multi-Modal	216368	Transit Capital	Grand Valley Metropolitan Council (GVMC)	Kent	Interurban Transit Partnership	Transit Capital	Areawide	0.000	SP1104-40 foot and greater replacement bus with or without lift	FY 2026: Section 5339	NI	\$1,053,602	\$263,401	\$0	\$1,317,003	5339	Exempt	
2026	Multi-Modal	214498	Transit Operating	Grand Valley Metropolitan Council (GVMC)	Kent	Interurban Transit Partnership	Transit Operating	Areawide	0.000	SP1701-rideshare	FY2026 Rideshare Program	NI	\$150,000	\$0	\$0	\$150,000	CMG	Exempt	
2026	Multi-Modal	214502	Transit Operating	Grand Valley Metropolitan Council (GVMC)	Kent	Interurban Transit Partnership	Transit Operating	Areawide	0.000	SP1702-ozone action	FY2026 Free Rides on Clean Air Action Days	NI	\$40,000	\$10,000	\$0	\$50,000	CM	Exempt	
2026	Trunkline	200196	S/TIP Line items	Grand Valley Metropolitan Council (GVMC)	Kent	MDOT	M-21	From Bennett Street east to Valley Vista Drive	6.079	Road Rehabilitation	Two Course Asphalt Resurfacing	CON	\$4,419,901	\$980,101	\$0	\$5,400,002	ST	Exempt	
2026	Trunkline	207544	S/TIP Line items	Grand Valley Metropolitan Council (GVMC)	Muskegon	MDOT	M-46	Non-Freeway Signing Upgrade, Non-freeway signing upgrade	42.237	Traffic Safety	Non-Freeway Signing Upgrade	CON	\$550,568	\$0	\$0	\$550,568	STG	Exempt	
2026	Trunkline	207554	S/TIP Line items	Grand Valley Metropolitan Council (GVMC)	Kent	MDOT	M-46	Non-Freeway Signing Upgrade	33.876	Traffic Safety	Non-Freeway Signing Upgrade	CON	\$504,310	\$0	\$0	\$504,310	STG	Exempt	
2026	Trunkline	211495	S/TIP Line items	Grand Valley Metropolitan Council (GVMC)	Kent	MDOT	M-37	32nd Street over M-37	0.000	Bridge Replacement	Bridge replacement.	CON	\$3,816,666	\$751,122	\$95,213	\$4,663,001	ST	Exempt	
2026	Trunkline	211694	S/TIP Line items	Grand Valley Metropolitan Council (GVMC)	Kent	MDOT	US-131	From I-96 north to Post Drive	6.185	Active Traffic Management	Active Traffic Management Systems	CON	\$26,701,037	\$5,920,877	\$0	\$32,621,914	NHFP	Exempt	
2026	Trunkline	213275	S/TIP Line items	Grand Valley Metropolitan Council (GVMC)	Kent	MDOT	Regionwide	All Trunkline Routes in Grand Region	17.669	Traffic Safety	Longitudinal Pavement Markings on trunkline routes in Grand Region	PE	\$2,205	\$245	\$0	\$2,450	HSIP	Exempt	
2026	Trunkline	213275	S/TIP Line items	Grand Valley Metropolitan Council (GVMC)	Kent	MDOT	Regionwide	All trunkline routes in Grand Region, All Trunkline Routes in Grand Region	17.669	Traffic Safety	Longitudinal Pavement Markings on trunkline routes in Grand Region	CON	\$650,475	\$72,275	\$0	\$722,750	HSIP	Exempt	
2026	Trunkline	213339	S/TIP Line items	Grand Valley Metropolitan Council (GVMC)	Kent	MDOT	Regionwide	All trunkline routes in GVMC MPO	1.557	Traffic Safety	Application of special pavement markings on trunklines in Grand Region	PE	\$2,205	\$245	\$0	\$2,450	HSIP	Exempt	
2026	Trunkline	213339	S/TIP Line items	Grand Valley Metropolitan Council (GVMC)	Kent	MDOT	Regionwide	All trunkline routes in GVMC MPO	1.557	Traffic Safety	Application of special pavement markings on trunklines in Grand Region	CON	\$196,245	\$21,805	\$0	\$218,050	HSIP	Exempt	
2026	Trunkline	213366	S/TIP Line items	Grand Valley Metropolitan Council (GVMC)	Kent	MDOT	Grand Region Regionwide Pvmr Mrkg Retro Readings	All of GVMC MPO	14.886	Traffic Safety	Pvmt mrkg retroreflectivity readings on trunklines in Grand Region	CON	\$3,528	\$392	\$0	\$3,920	HSIP	Exempt	

GVMC Project List for 2023 to 2026 TIP for Kent and Ottawa Counties

Fiscal Year	Job Type	Job#	GPA Type	MPO	County	Responsible Agency	Project Name	Limits	Length	Primary Work Type	Project Description	Phase	Fed Estimated Amount	State Estimated	Local Estimated	Calculated Total	Fund Source	Air Quality	Air Quality Comment
2026	Trunkline	204378	Trunkline Bridge	Grand Valley Metropolitan Council (GVMC)	Kent	MDOT	US-131	over West River Drive	0.000	Bridge Rehabilitation	Deep Overlay	CON	\$3,531,828	\$783,173	\$0	\$4,315,001	NH	Exempt	
2026	Trunkline	208926	Trunkline Bridge	Grand Valley Metropolitan Council (GVMC)	Kent	MDOT	US-131	14 Mile Road (M-57) over US-131 Algoma Twp, Kent County	0.000	Bridge Rehabilitation	Deep overlay	CON	\$2,245,964	\$498,036	\$0	\$2,744,000	NH	Exempt	
2026	Trunkline	209253	Trunkline Bridge	Grand Valley Metropolitan Council (GVMC)	Kent	MDOT	US-131	12 Mile Road over US-131 Algoma Twp. Kent County	0.000	Bridge Rehabilitation	Deep Overlay	CON	\$1,115,616	\$247,385	\$0	\$1,363,001	BO	Exempt	
2026	Trunkline	211447	Trunkline Bridge	Grand Valley Metropolitan Council (GVMC)	Kent	MDOT	US-131	Pine Island Drive over US-131	0.000	Bridge CPM	Deck Patching	CON	\$448,539	\$99,463	\$0	\$548,002	BO	Exempt	
2026	Trunkline	211448	Trunkline Bridge	Grand Valley Metropolitan Council (GVMC)	Kent	MDOT	US-131	10 Mile Road over US-131	0.000	Bridge CPM	Deck Patching	CON	\$627,790	\$139,211	\$0	\$767,001	NH	Exempt	
2026	Trunkline	211738	Trunkline Traffic Operations And Safety	Grand Valley Metropolitan Council (GVMC)	Kent	MDOT	M-57	Ramsdell Drive to Morgan Mills Avenue	5.943	Traffic Safety	Shoulder Paving with Shoulder Rumble Strips	CON	\$2,132,325	\$236,925	\$0	\$2,369,250	HSIP	Exempt	

GVMC Additional Projects for 2023 to 2026 TIP

JobNet job number	FISCAL YEAR	FUND	PROJECT LOCATION	LIMITS	PROJECT DESCRIPTION	JURISDICTION	LENGTH	FEDERAL/STATE	NON-FED	NON-PARTICIPATING	Total Participating	TOTAL	Local Share of Partic. as Submitted	Air Quality	Air Quality Comment
	2023	TAU	Collindale Avenue Pathway/Sidewalk and Burritt Street Sidewalk	Lake Michigan Drive to Burritt Street and 270' West of Collindale Avenue to Collindale Avenue	Construction of pathway/sidewalk along Collindale Avenue and completion of sidewalk on the north side of Burritt Street, west of Collindale Avenue. This project supports the vision, goals and objectives (connectivity) of the City of Grand Rapids VITAL STREETS PLAN (2016)	City of Grand Rapids	0.25	\$ 306,944	\$131,547	\$139,173	\$438,491	\$577,664	30.00%	exempt	
	2023	TAU	E Fulton at Alten Ave NE, Lake Eastbrook SE at Camelot SE, Cesar E Chavez Ave SW at Beacon St SW, Bridge St NW at Garfield Ave NW, Eastern Ave SE at Logan St SE, W Leonard St at Davis Ave NW	E Fulton at Alten Ave NE, Lake Eastbrook SE at Camelot SE, Cesar E Chavez Ave SW at Beacon St SW, Bridge St NW at Garfield Ave NW, Eastern Ave SE at Logan St SE, W Leonard St at Davis Ave NW	Installation of pedestrian actuated rapid flashing beacons plus curb extensions at Leonard/Davis intersection. All locations serve existing transit stop pairs, three locations serve schools/college, and two sites serve park access and bicycle facilities. Four of the six locations fall within the City's Neighborhoods of Focus.	City of Grand Rapids		\$ 251,451	\$107,765		\$359,216	\$359,216	30.00%	exempt	
	2024	TAU	Robinson Rd & Cascade Rd	Robinson Rd - Plymouth to Cascade, Cascade Rd - Robinson to East Beltline	8ft sidewalk	East GR/GR Twp/ Cascade Twp/KCRC	1.50	\$ 779,548	\$334,092		\$1,113,640	\$1,113,640	30.00%	exempt	
	2025	TAU	Fruitridge Ave	3940 Fruit Ridge to 4 Mile	Sidewalk on East side	Alpine Twp/KCRC		\$ 140,000	\$60,000		\$200,000	\$200,000	30.00%	exempt	
	2025	TAU	Kinney Ave	Lake Michigan to Leonard	Sidewalk on East side	Walker		\$ 175,000	\$75,000		\$250,000	\$250,000	30.00%	exempt	
	2025	TAU	M-44/M-37	Over I-96	Nonmotorized facility on an existing bridge	MDOT		\$ 330,800	\$1,669,200		\$2,000,000	\$2,000,000	83.46%	exempt	
	2026	TAU	Lakeside Avenue Sidewalk	Fulton Street to Michigan Street	Construction of sidewalk along Lakeside Avenue. This project supports the vision, goals and objectives (connectivity) of the City of Grand Rapids VITAL STREETS PLAN (2016)	City of Grand Rapids	0.44	306657	131425	\$139,043	\$438,082	\$577,125	30.00%	exempt	
	2026	TAU	Turner Ave NW/ Mt Vernon Ave NW/ 2nd St NW	Turner Ave NW between 4th St NW to Bridge St NW, Mount Vernon Ave NW between Bridge St NW and Pearl St NW, and 2nd St NW between Turner Ave NW and Stocking Ave NW	Construction of bicycle facilities to provide two-way bicycle facilities with connections to existing bicycle facilities on Turner Ave north of 4th St, 4th St west of Turner Ave, and Pearl St/Lake Michigan Dr west of Mount Vernon and connections to planned bicycle facilities on Mount Vernon Ave south of Pearl St, Stocking Ave north of 2nd St, 1st/2nd St west of Stocking Ave, and Pearl St east of Mount Vernon.	City of Grand Rapids	1.00	\$ 352,918	\$151,251			\$504,169	30.00%	exempt	The section of road on Turner St NW between 4 th ST NW to Bridge ST will be a road diet with one through lane removed. Refer to road diet questionnaire
216572	2025	CRP	Grace Christian to Plaster Creek	Aldon St to Burton St and Clyde Park Ave	Shared use path/sidepath	Wyoming	0.98	\$ 600,192	\$2,670,433			\$3,270,625	81.65%	exempt	
	2026	CRP	Jenkins Ave to Grace Christian	28th St to Aldon St	shared use path/sidepath	Wyoming	0.46	\$ 203,000	\$87,000			\$290,000	30.00%	exempt	

Ottawa County Project List Rural STIP 2023 to 2026

Fiscal Year	Job Type	Job#	GPA Type	MPO	County	Responsible Agency	Project Name	Limits	Length	Primary Work Type	Project Description	Phase	Fed Estimated Amount	State Estimated Amount	Local Estimated Amount	Total Estimated Amount	Fund Source	Air Quality	Air Quality Comment
2024	Trunkline	205235	S/TIP Line items	Rural	Ottawa	MDOT	I-96	Us-131, I-196, I-96, US-131, I-96, I-196	34.885	ITS Applications	Rural Freeway Traffic Management systems	CON	\$1,621,852	\$359,641	\$0	\$1,981,493	NH	exempt	
2024	Local	214703	S/TIP Line items	Rural	Ottawa	Ottawa County	48th Ave	48th Avenue, Str #8921, over Beaver Creek, Ottawa County	0.000	Bridge Replacement	Bridge Replacement	CON	\$703,200	\$0	\$175,800	\$879,000	BO	exempt	